

Fiche Dimension Parallèle

MYTHOLOGIQUE

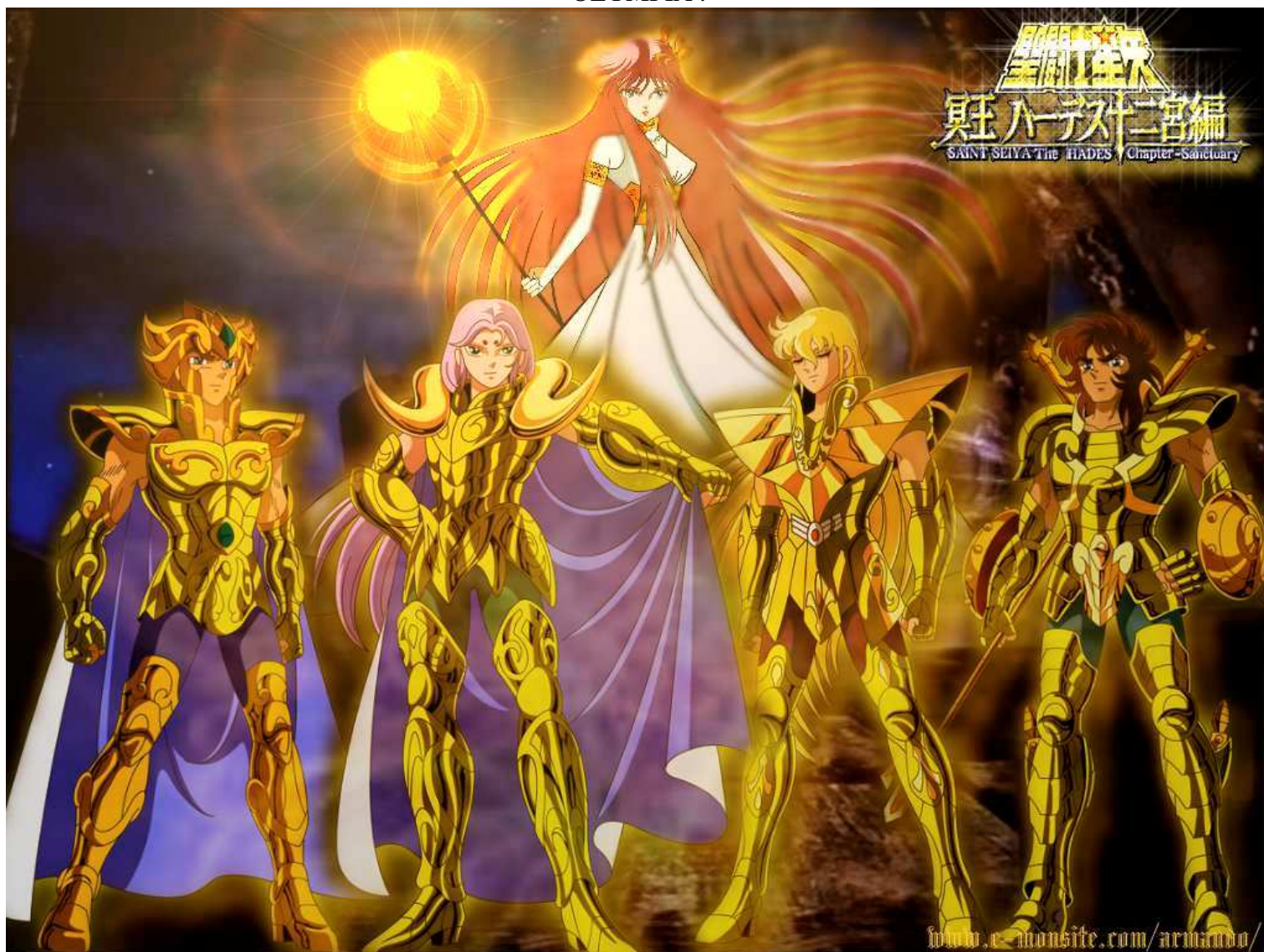
<u>Situation :</u>	Quelque part hors de l'espace et du temps, dimension de type E reliée au 6 ^{ième} univers.	<u>Système solaire :</u>	Soleil illusoire, voûte céleste avec carte astrale terrestre.	<u>Créateur(s) :</u>	Inconnus, peut être à la fois des humains et des tyggs.
<u>Orbite :</u>	Une lune illusoire, comme celle qu'avait la Terre.	<u>Type :</u>	Type planétoïde avec des territoires issus de chaque mythologies terrestres.	<u>Pression :</u>	1 (normale).
<u>Atmosphère :</u>	Oxygène – azote. Aucune pollution.	<u>Océans :</u>	75% mais se jetant dans le « vide » (mythe nordique).	<u>Diamètre :</u>	731 km.
<u>Densité :</u>	8,3. supérieurement ferreux.	<u>Gravité :</u>	0,89 G.	<u>Inclinaison sur l'axe orbital :</u>	0°.
<u>Effets saisonniers :</u>	Aucun, été permanent.	<u>Longueur de jour :</u>	24 H.	<u>Composition du sol :</u>	Plus de métal que de roche.
<u>Climat :</u>	Multiple : de glacé à tropical en fonction des territoires.	<u>Températures :</u>	Basses –30°, moyennes -- 20°, Hautes 45°.	<u>Relief principal :</u>	Montagnes couvertes d'escaliers et de temples.
<u>Relief secondaire :</u>	Glaciers, plaines, forêts, océans, déserts.	<u>Longueur de l'année :</u>	365 J.	<u>Lune(s) :</u>	1.

Tableau des ressources :

Ressources	Planète
Matières organiques	Rare
Matières radioactives	Ample sans surplus
Métaux industriels	Ample, exportation possible
Métaux légers	Ample, exportation possible
Métaux lourds	Ample, exportation possible
Minéraux spéciaux	Ample, exportation possible
Cristaux précieux	Ample, exportation possible
Biosphère	Flore multiple en fonction des territoires. Faune multiple en fonction des territoires. L'espèce intelligente dominante est l'homme, mais il existe d'autres races issues des mythes...

FICHE DIMENSION MYTHOLOGIQUE – SECTION MYTHES GRECO-ROMAINS

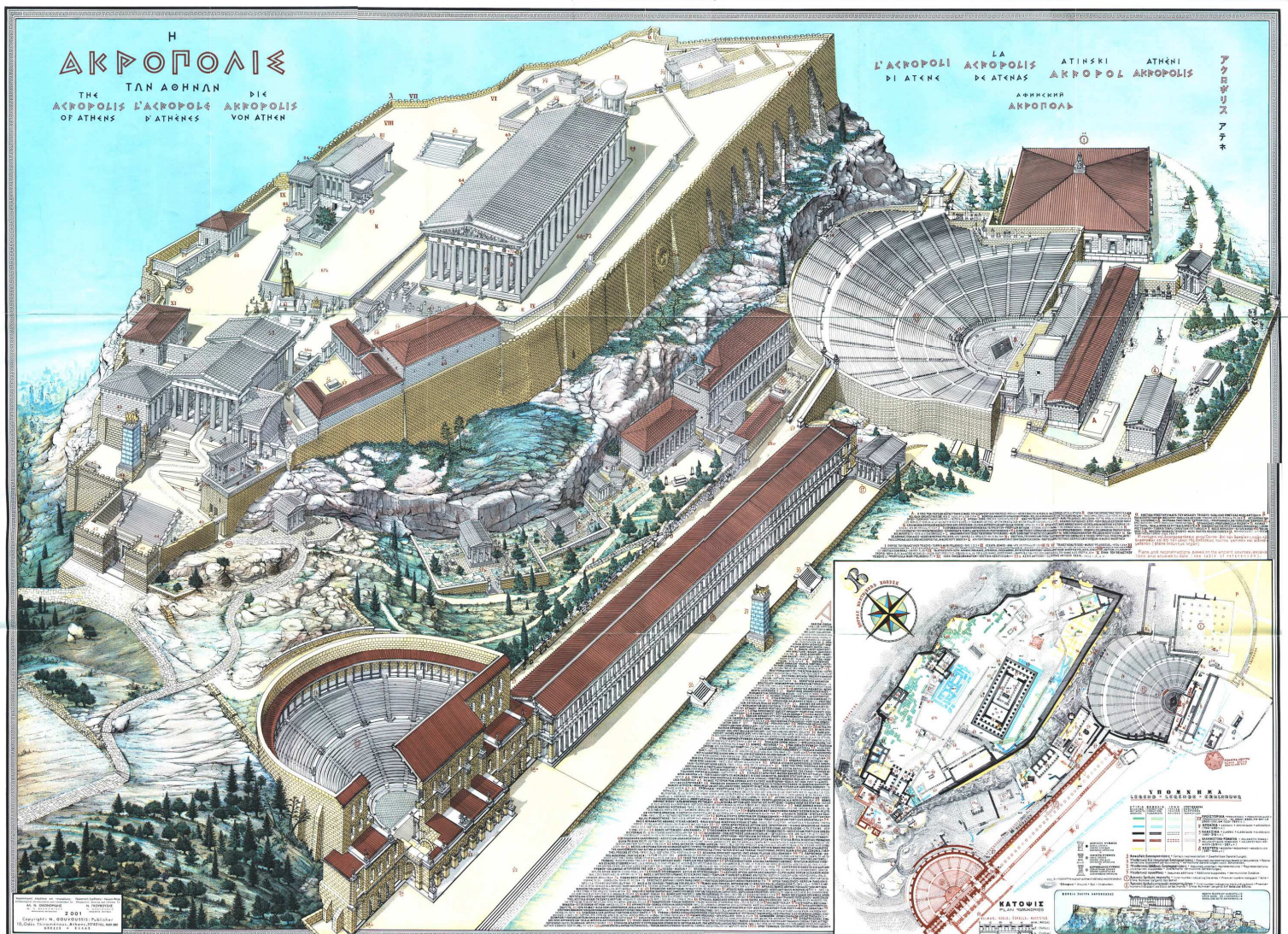
OLYMPIA :

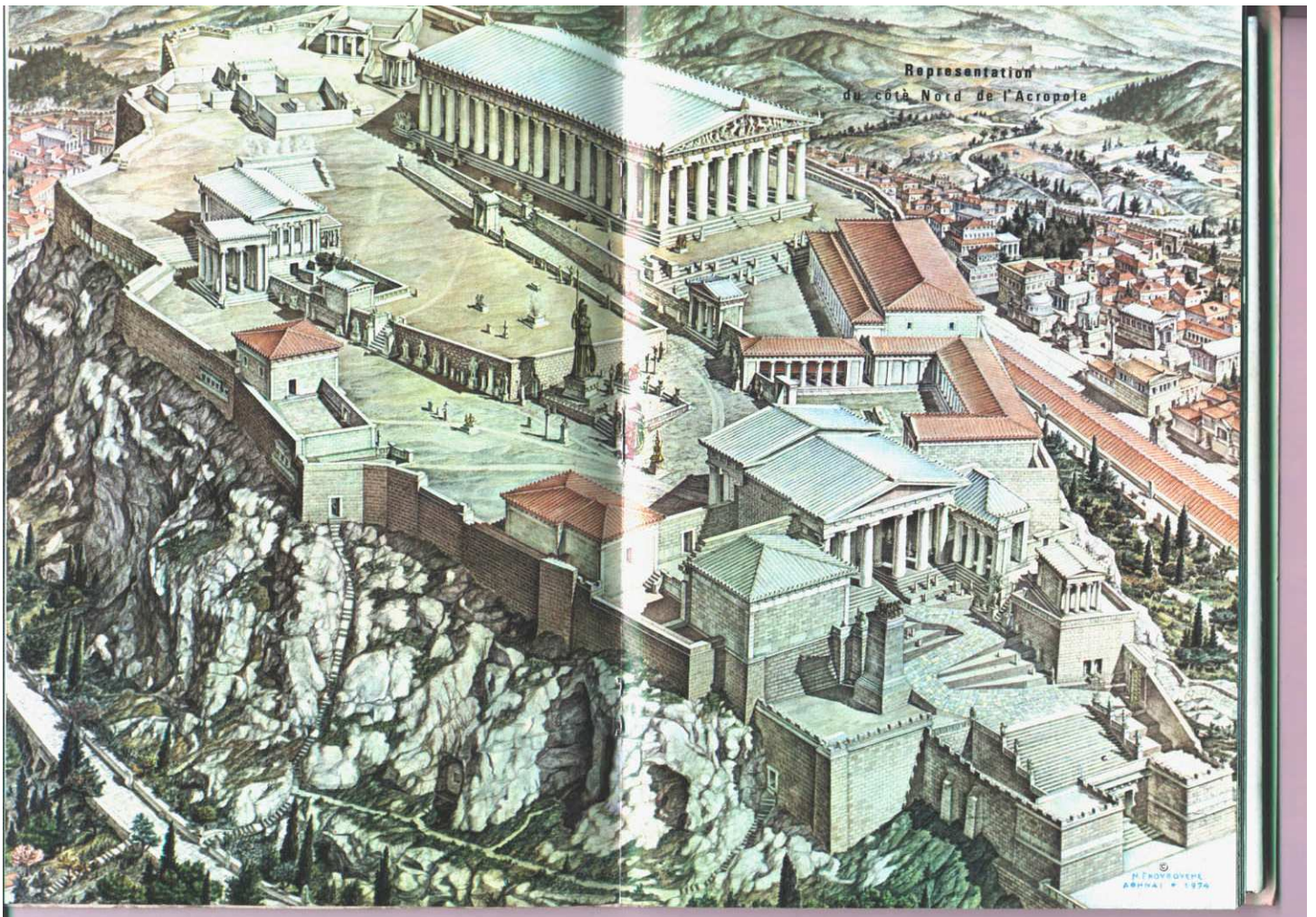


Les seuls lieux visités à Olympe par les prisonniers du temps sont pour l'instant le Sanctuaire, et le Styx...

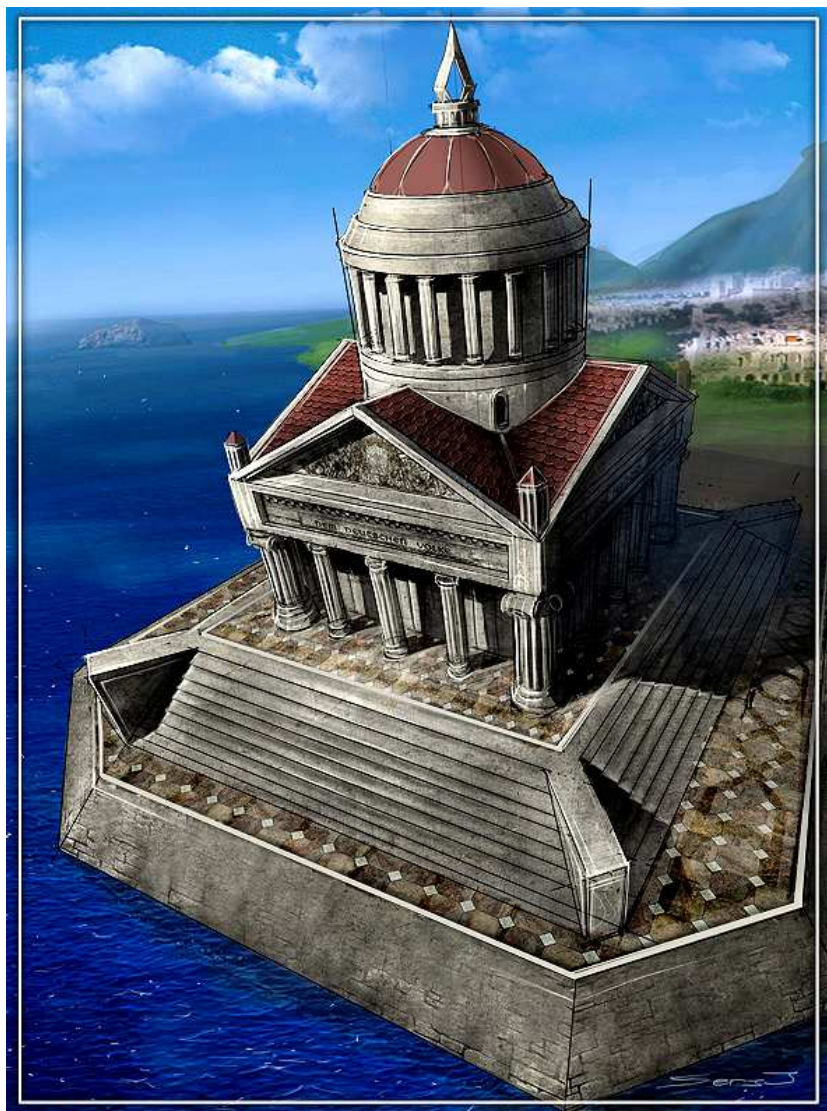
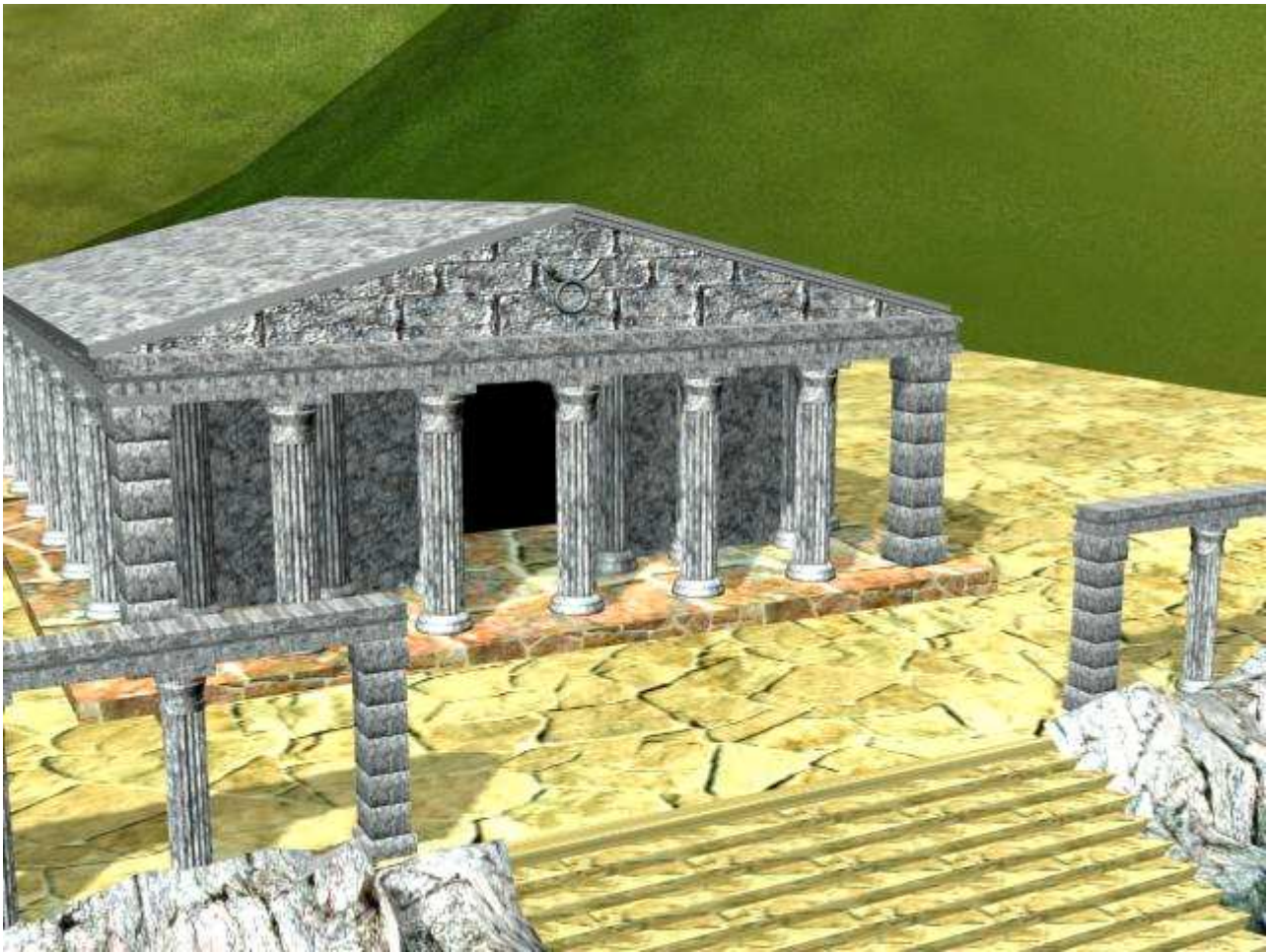


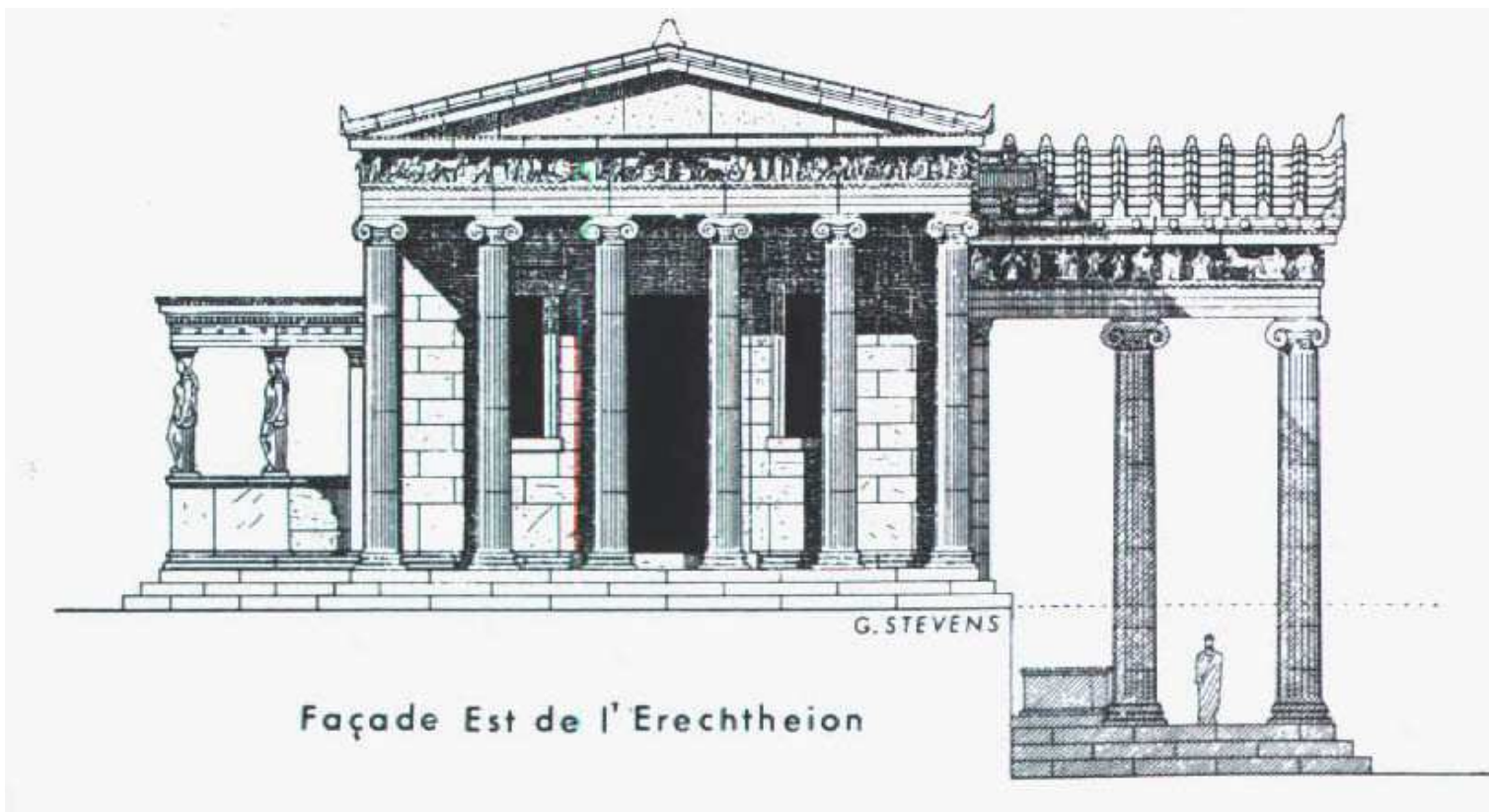
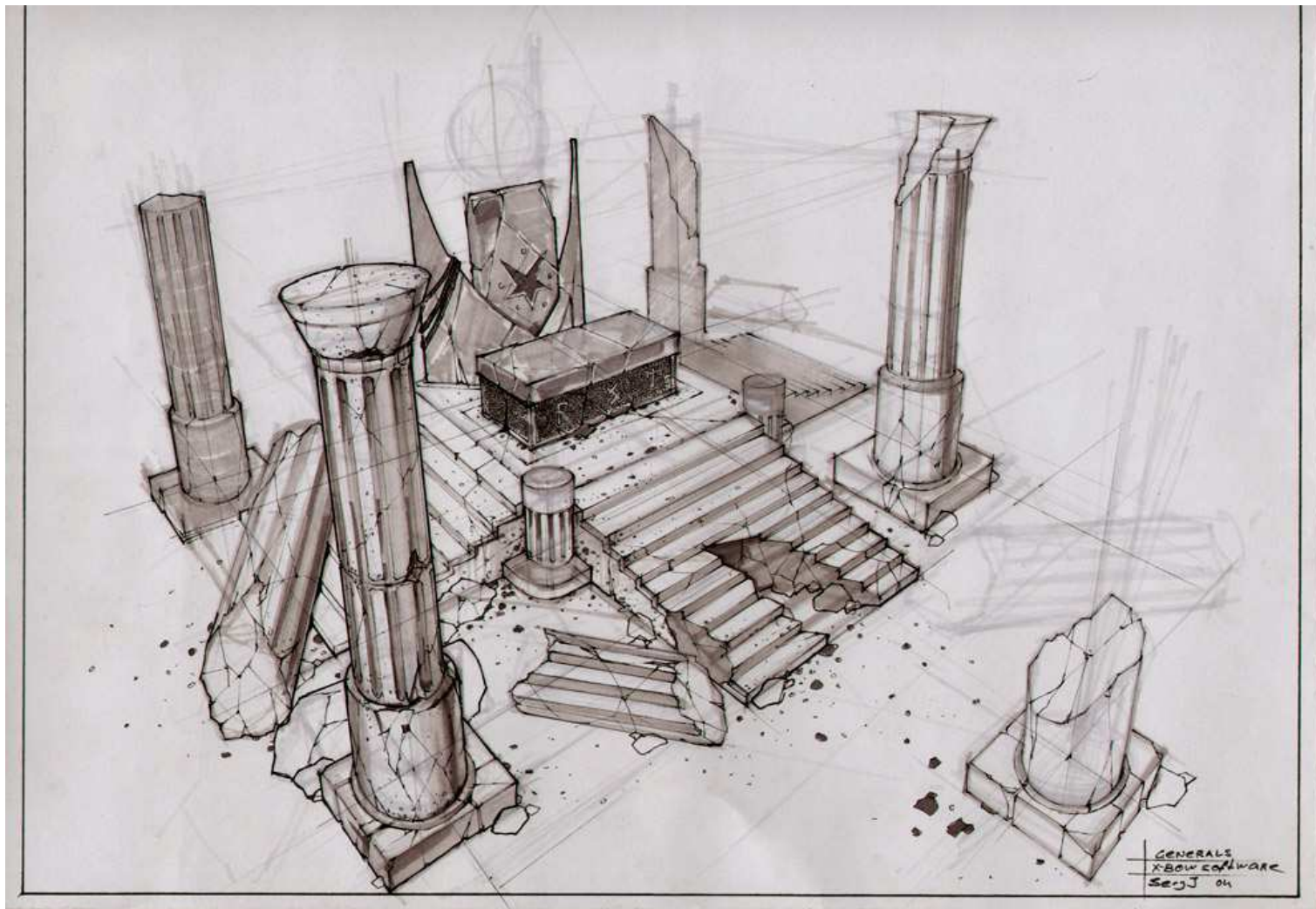
LE SANCTUAIRE :





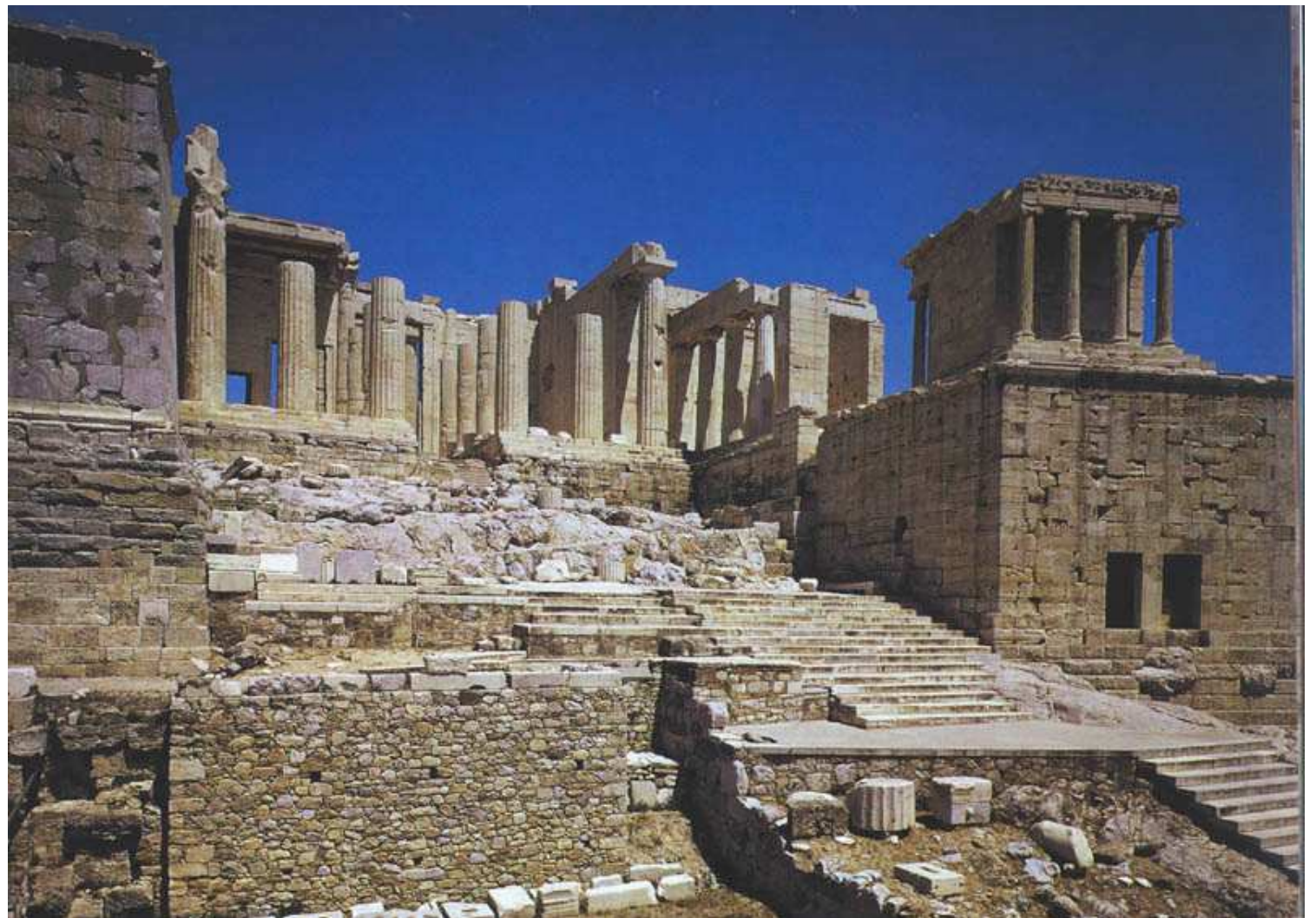


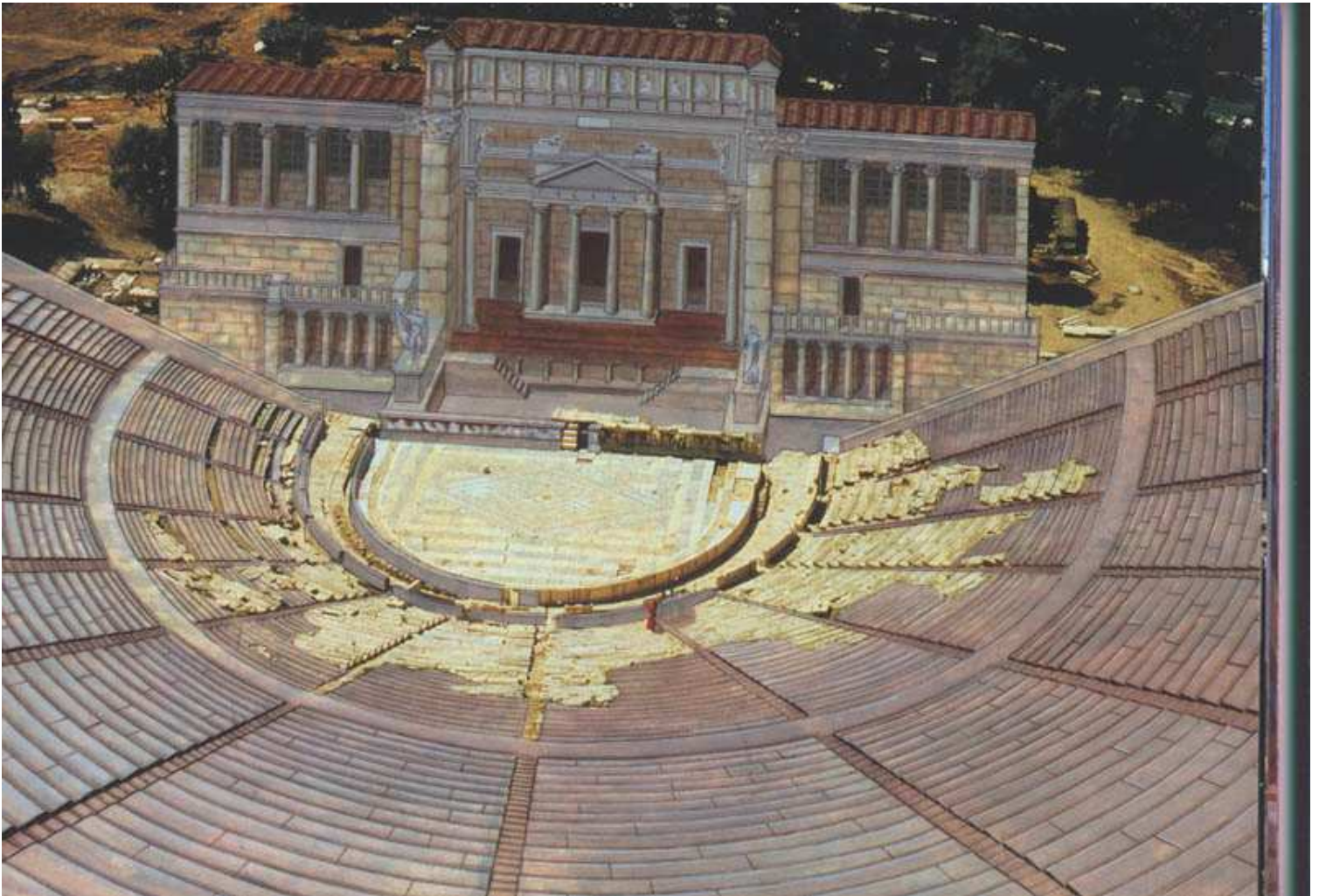


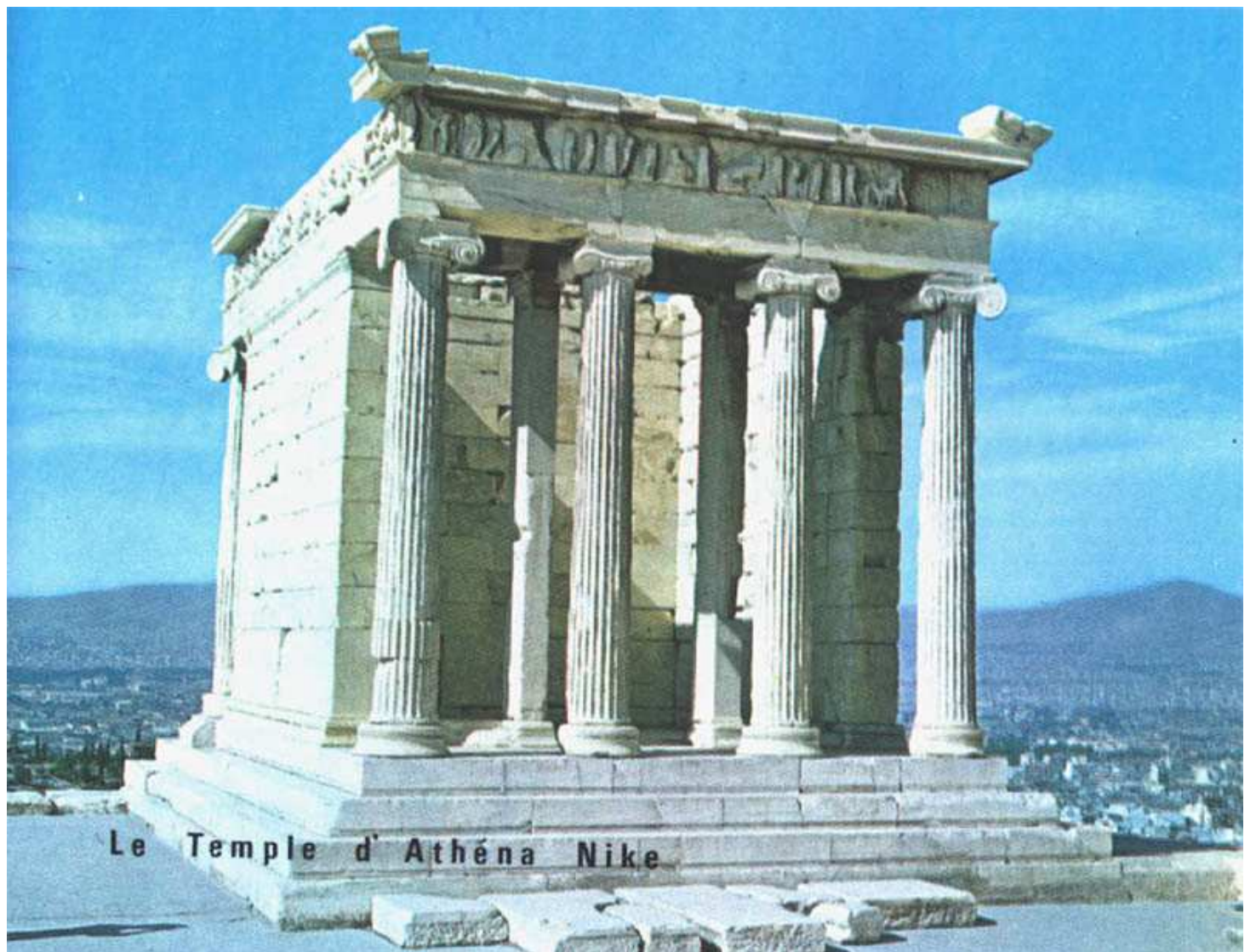


Certaines parties du Sanctuaire sont en ruines,
mais tous les matériaux (Tyggs ?) y sont animés d'une vie propre qui semble les régénérer assez vite...

ATHENS Acropolis

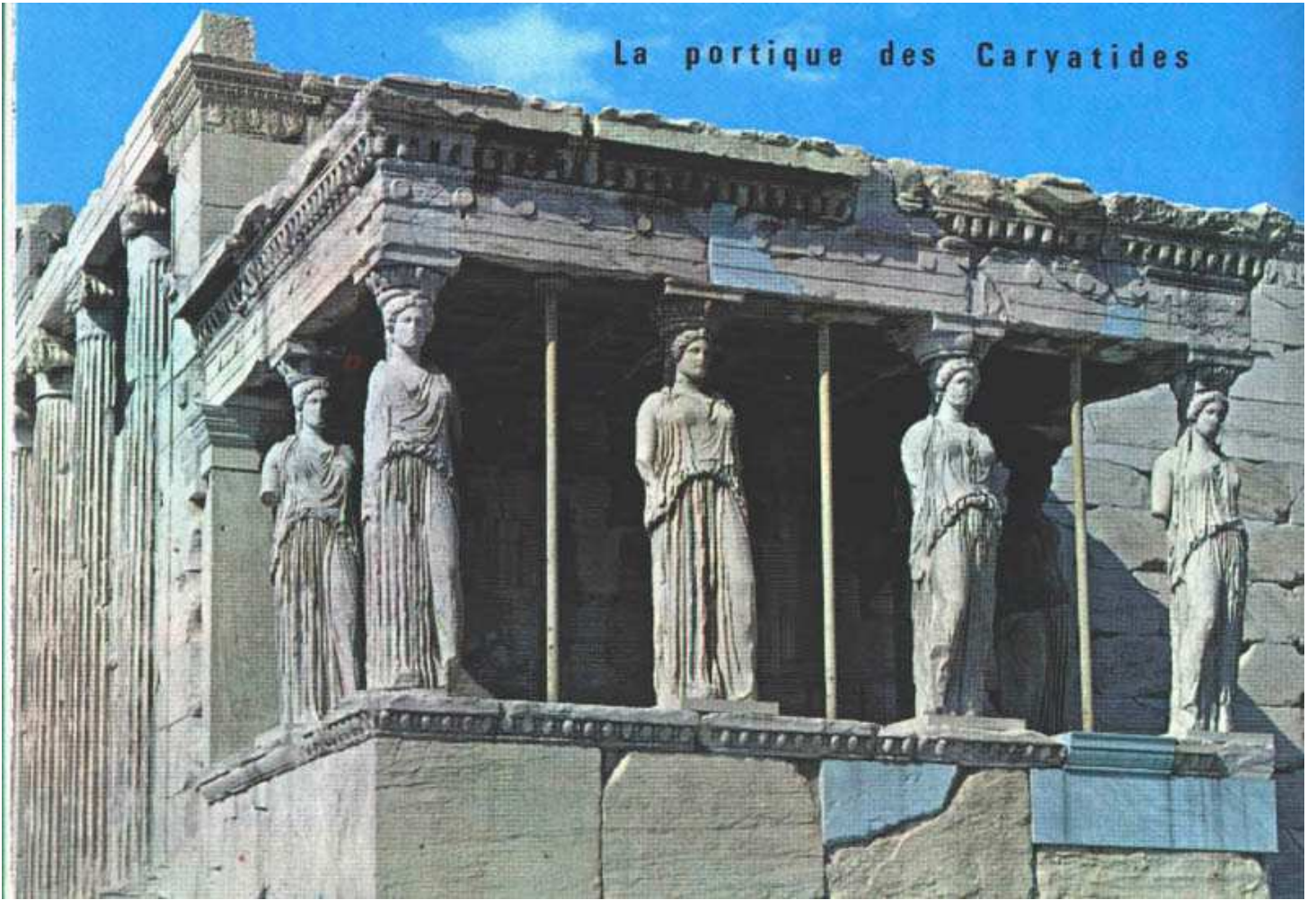




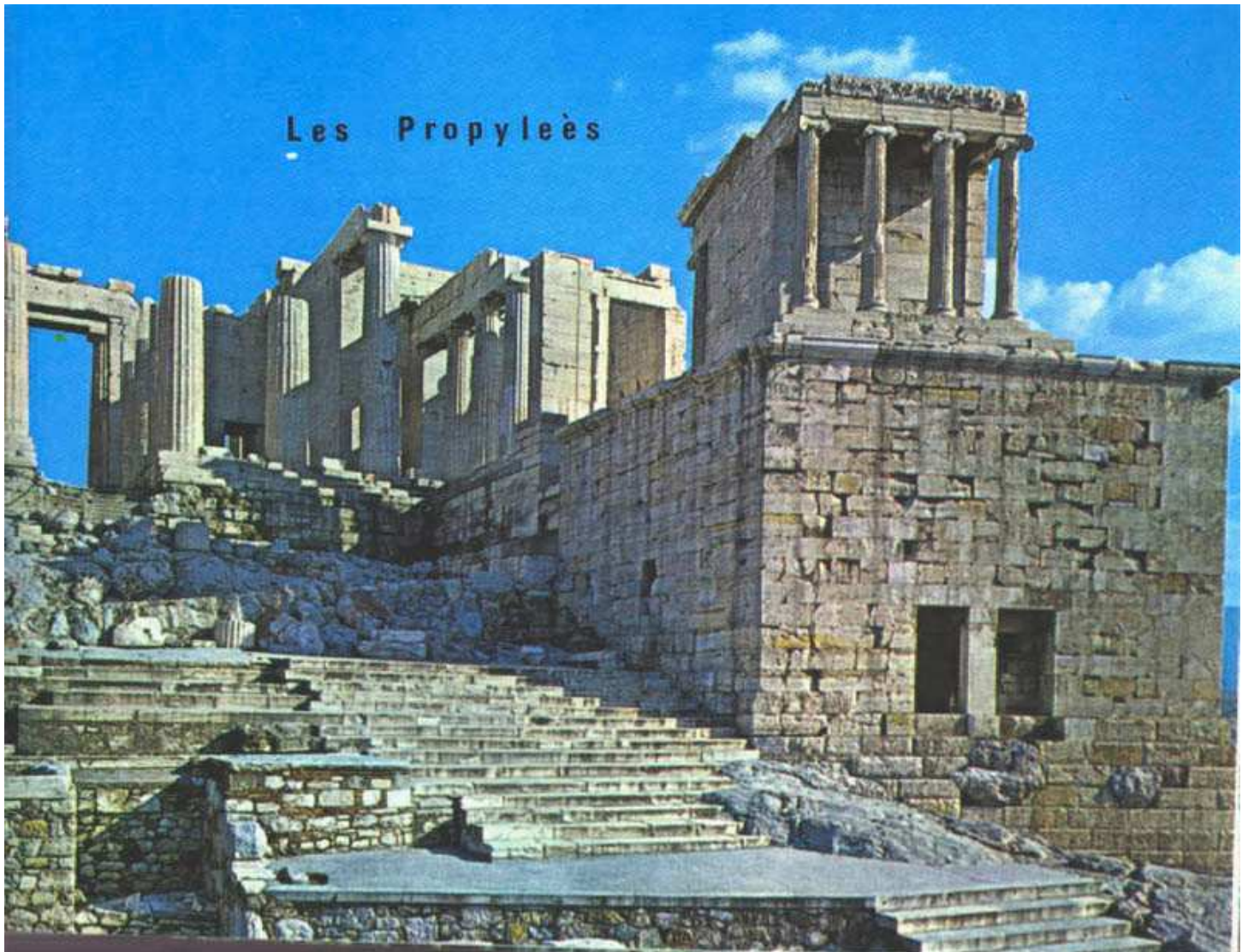


Le Temple d'Athéna Nike

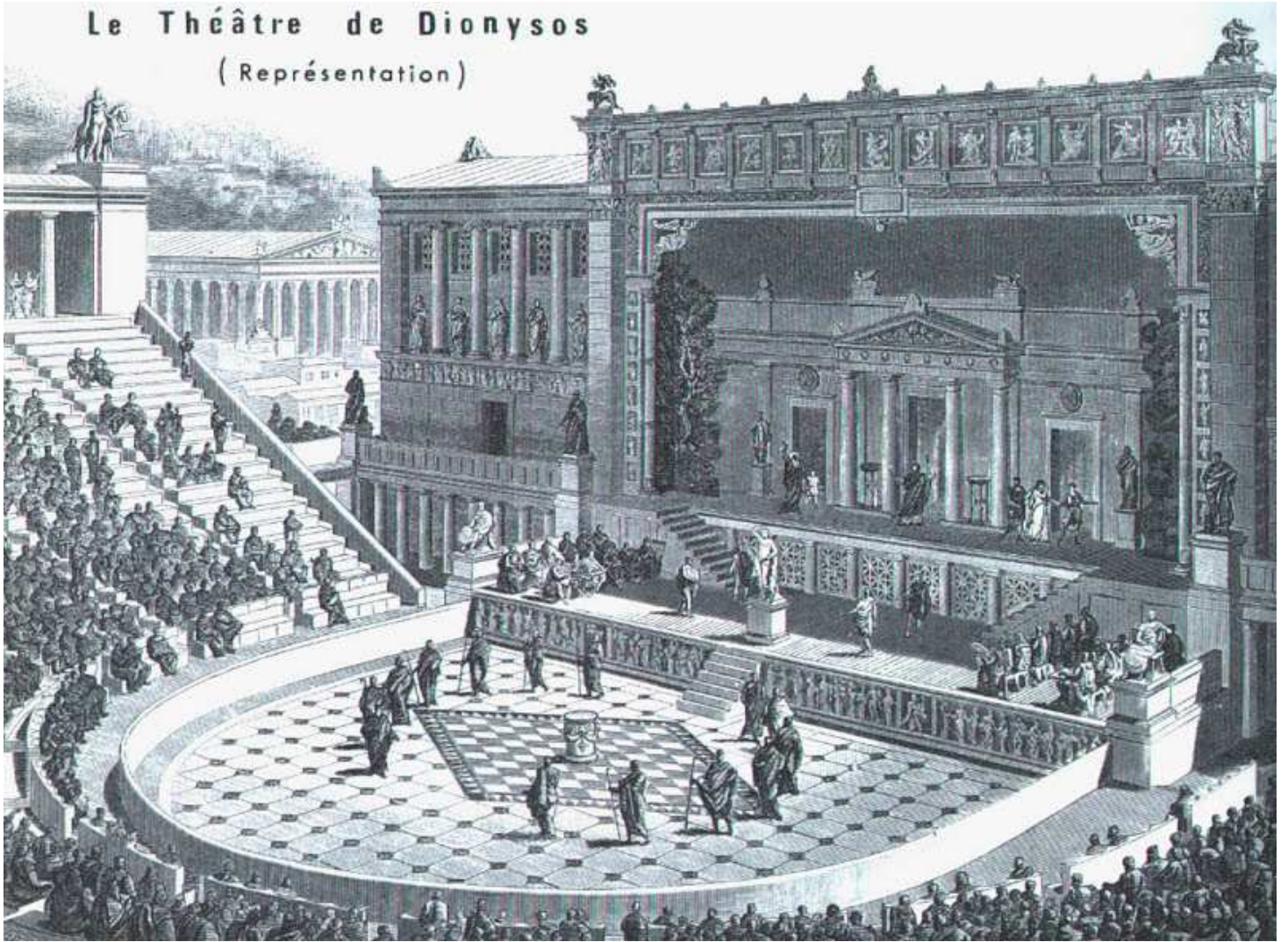
La portique des Caryatides



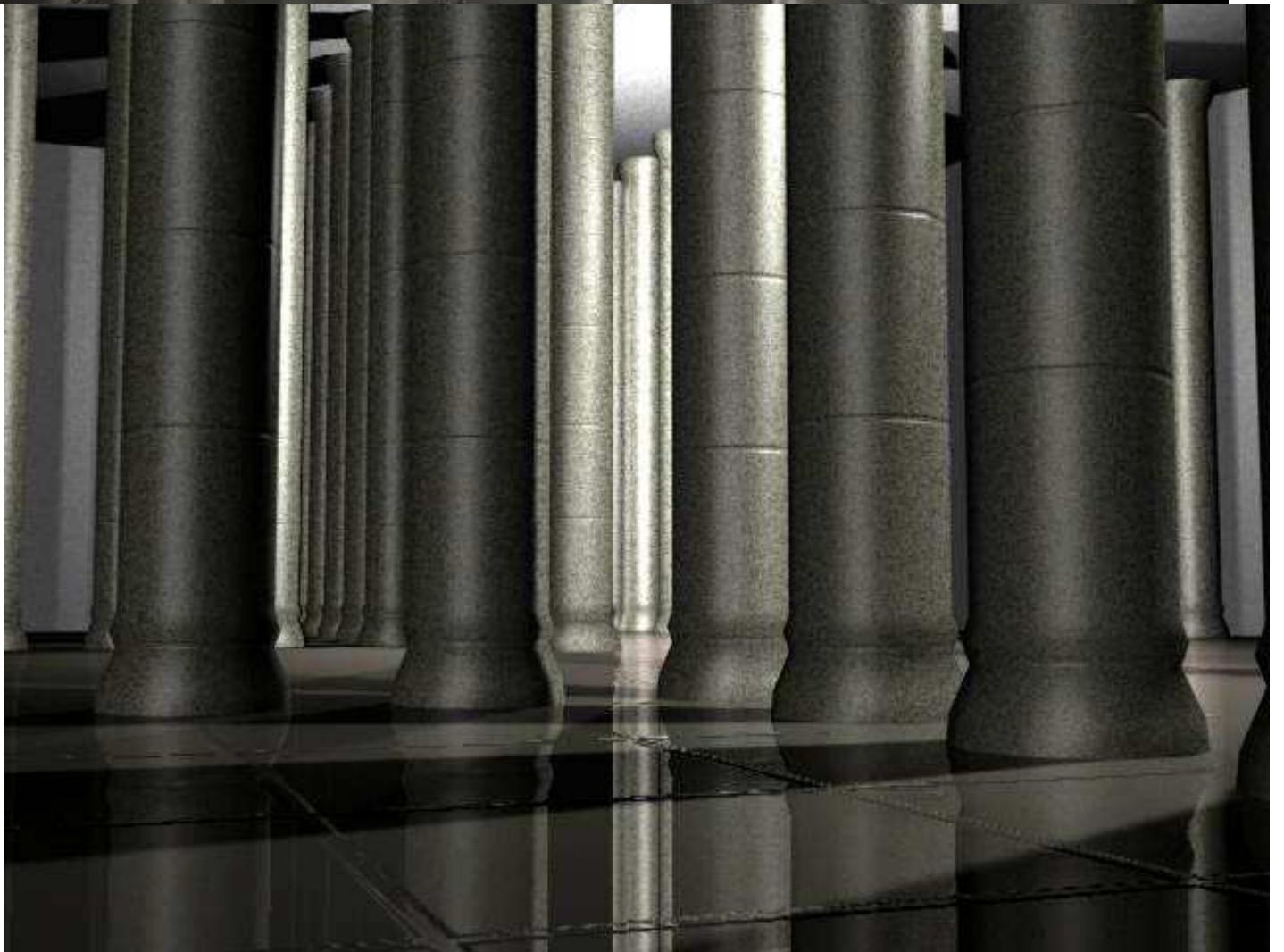
Les Propylées



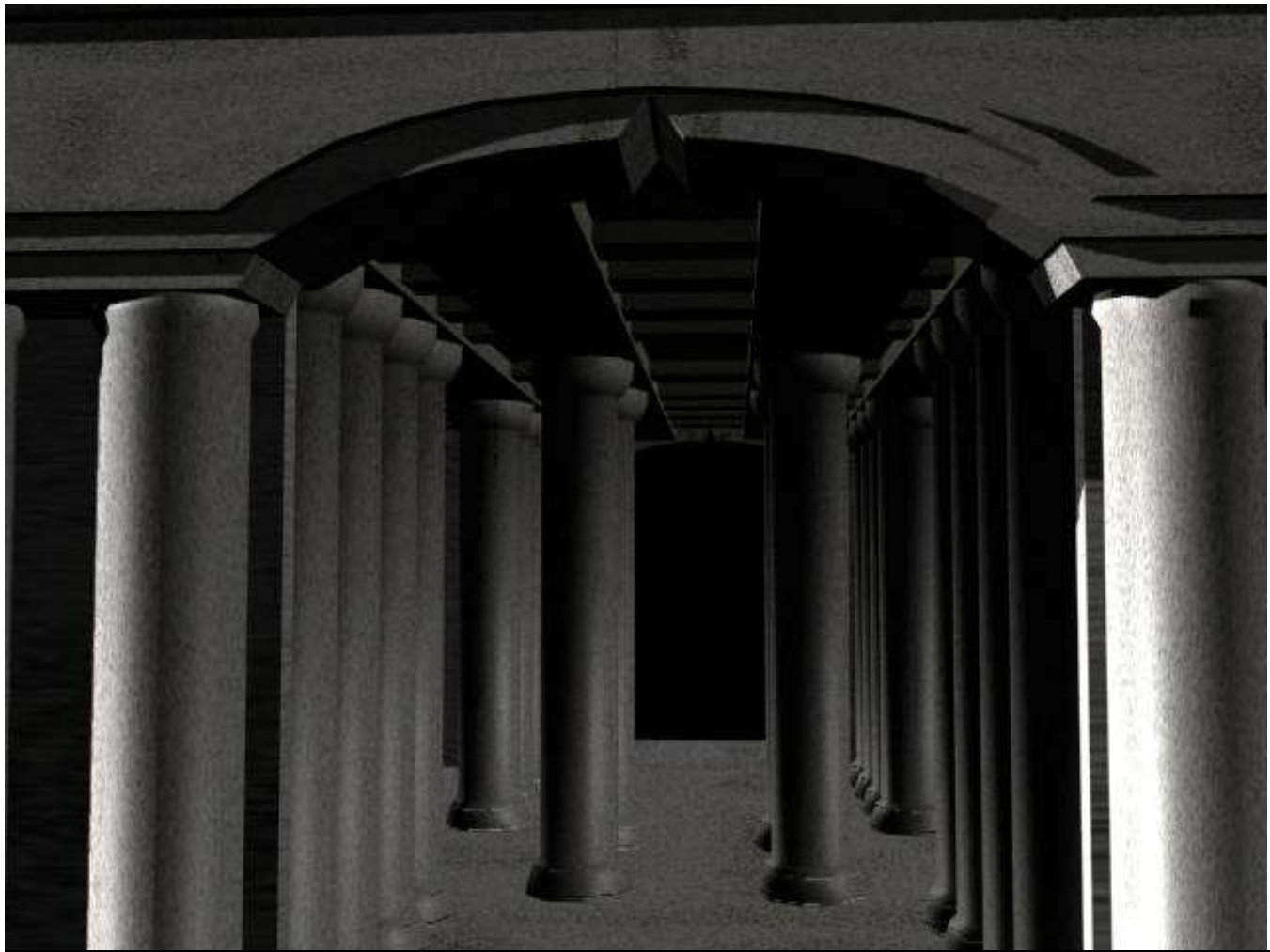
Le Théâtre de Dionysos
(Représentation)

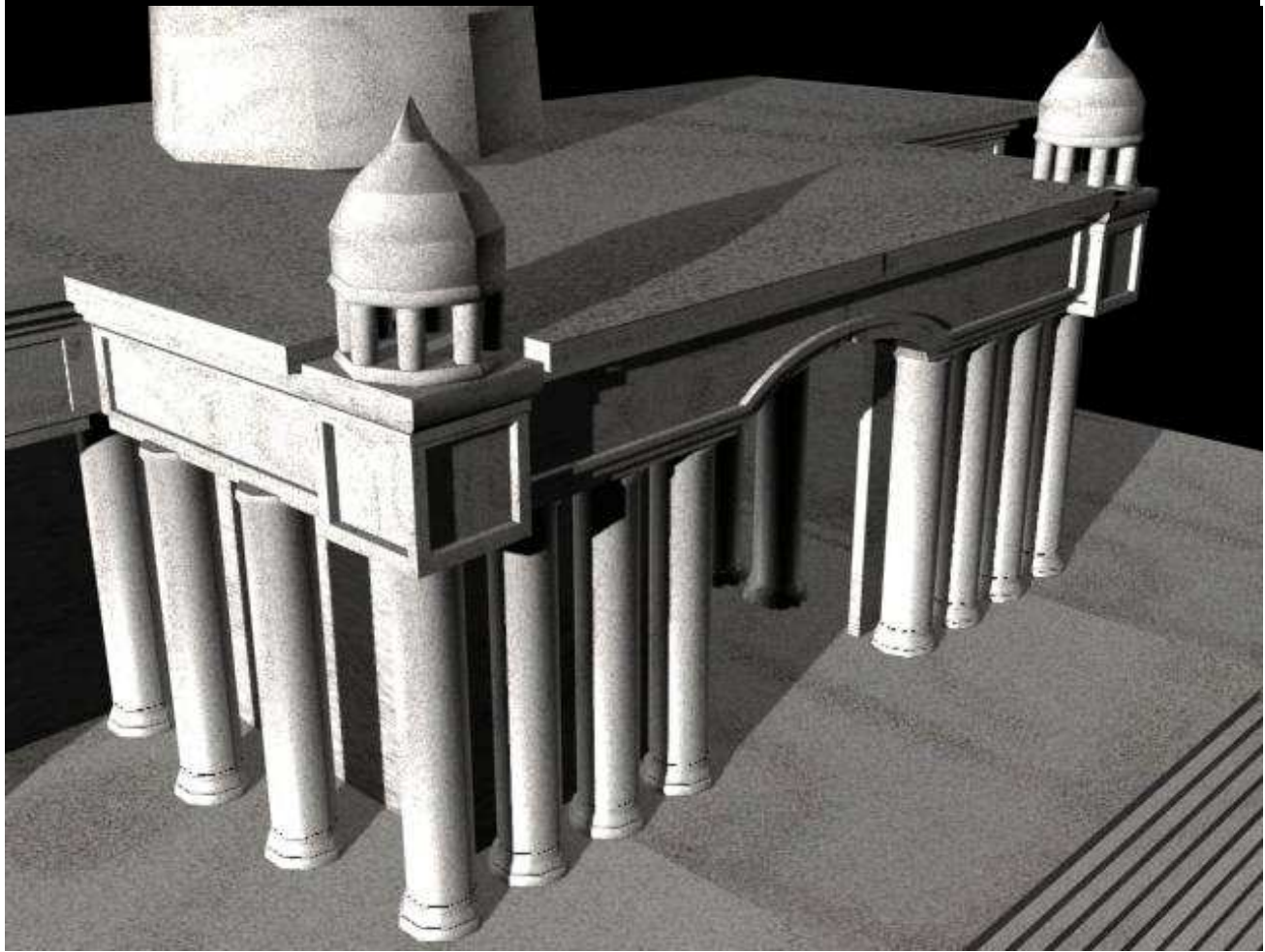
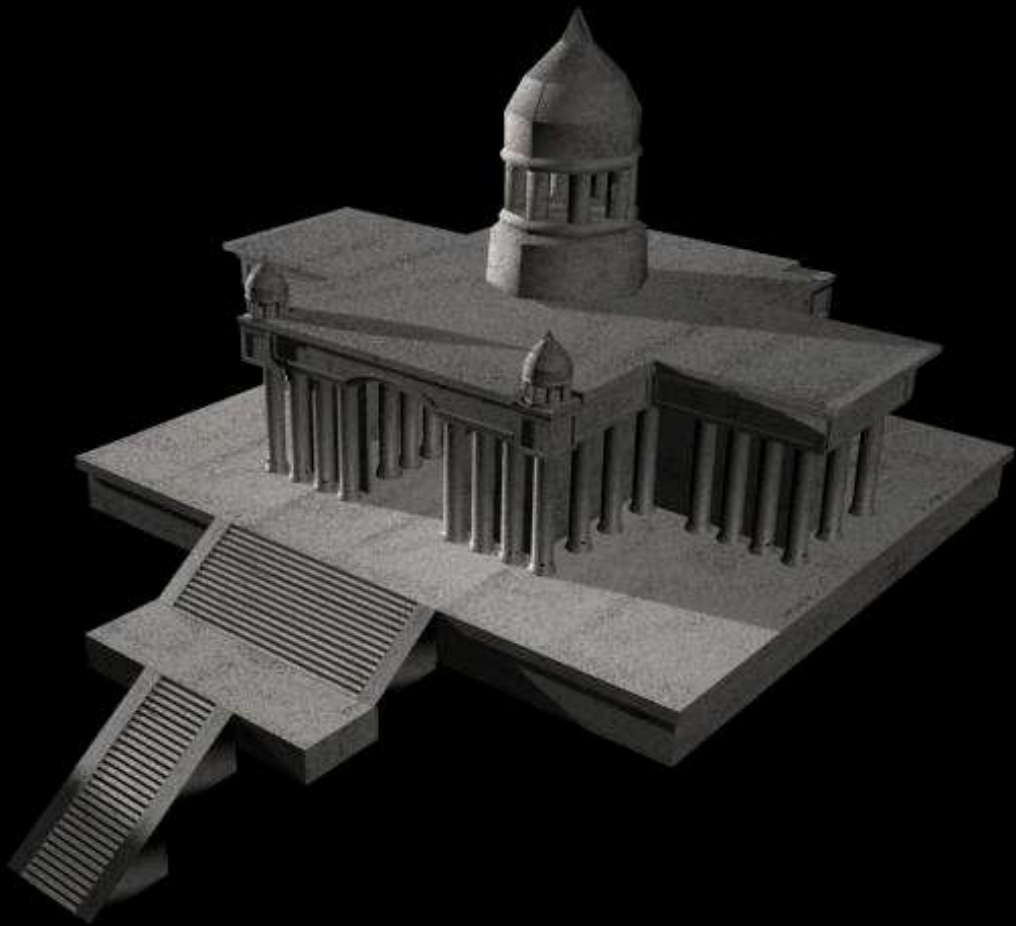


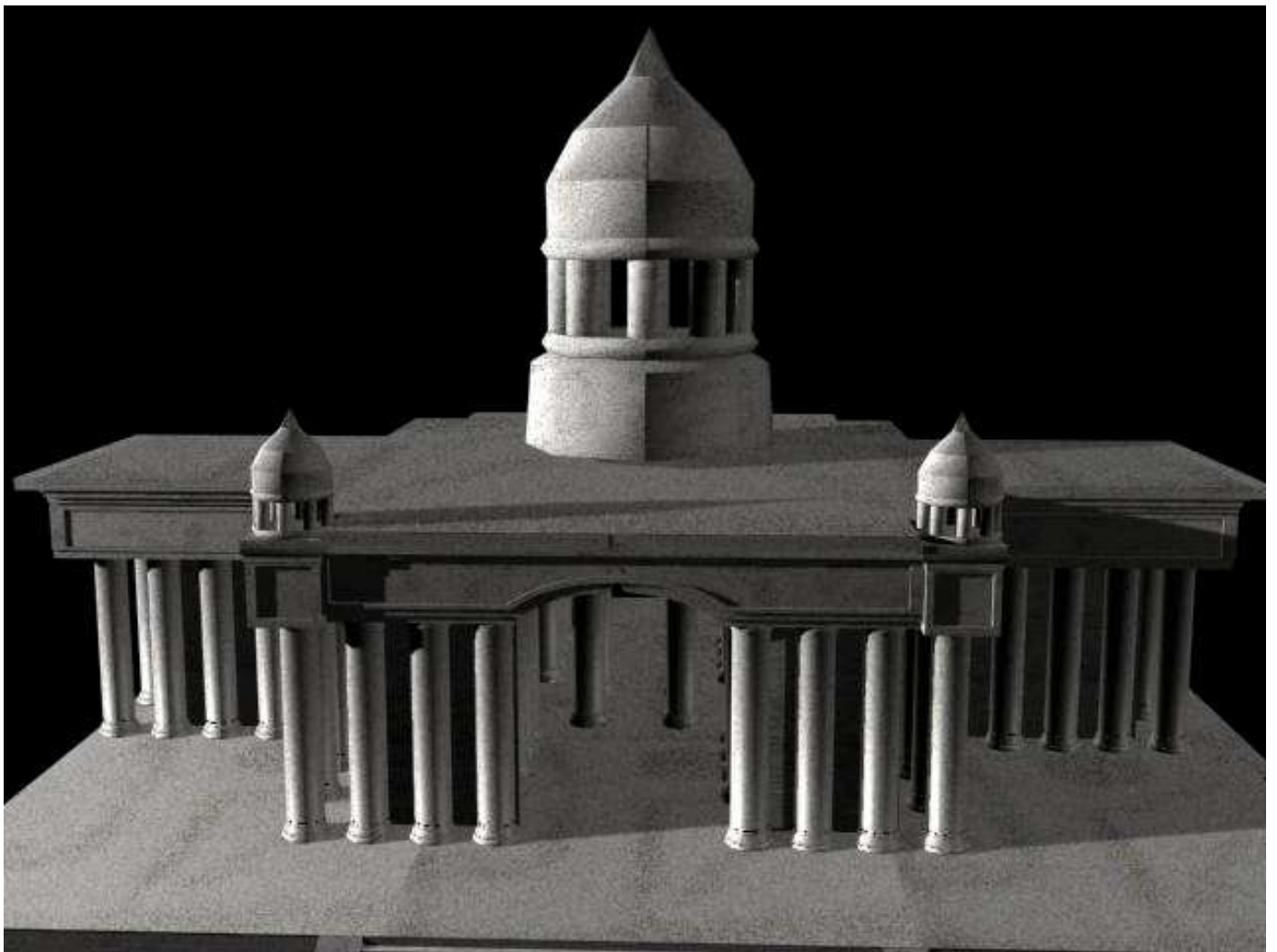


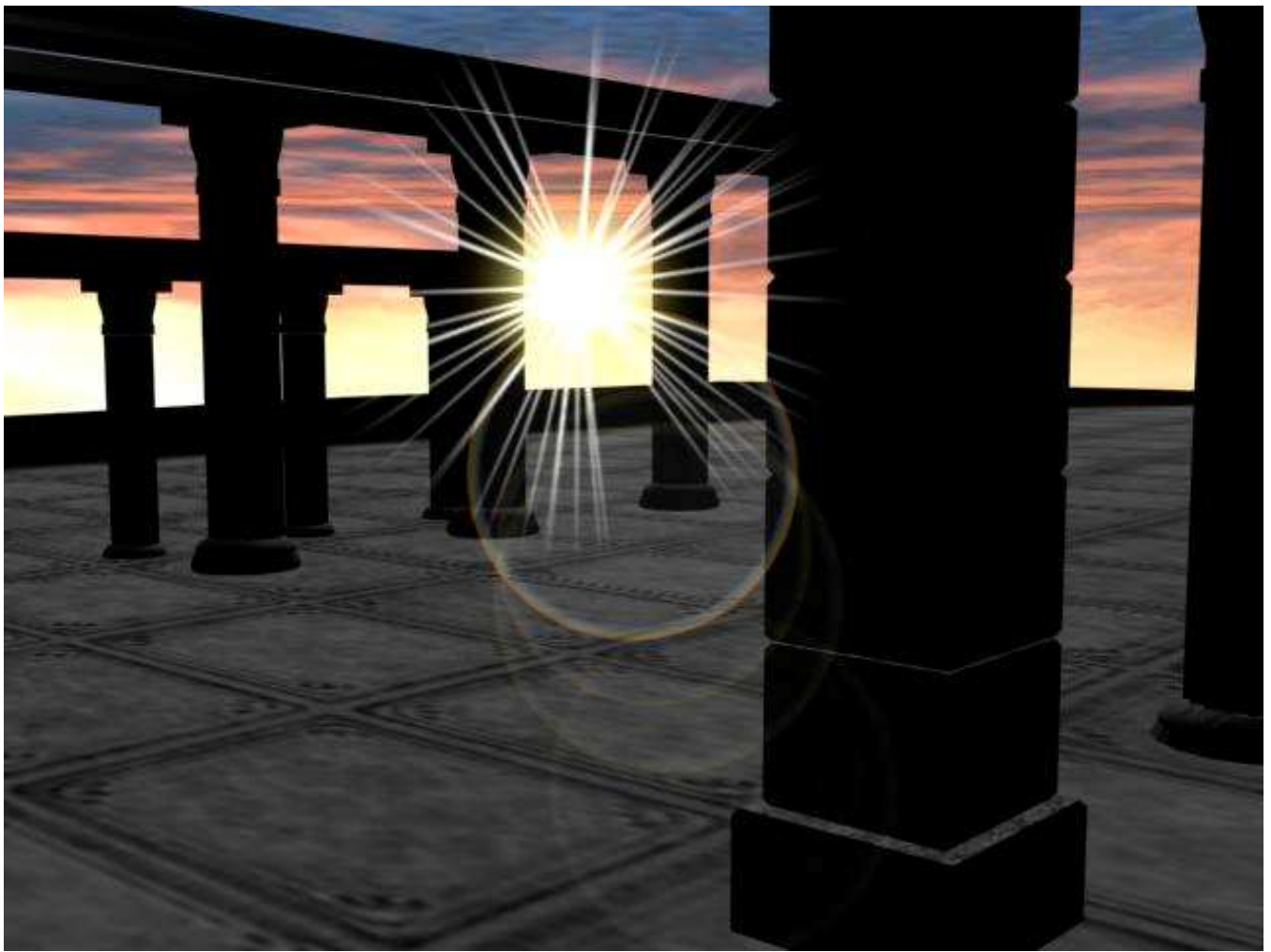






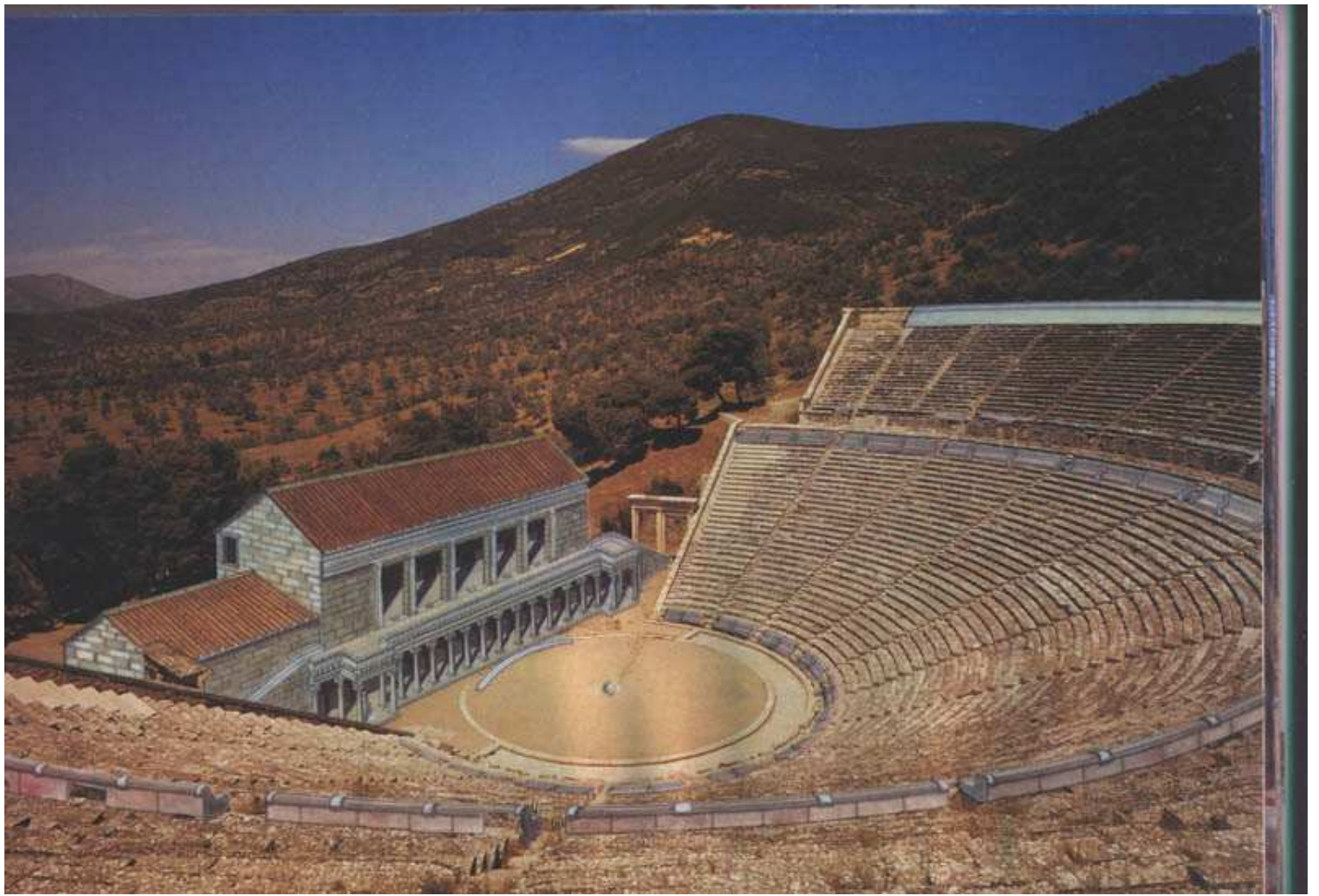


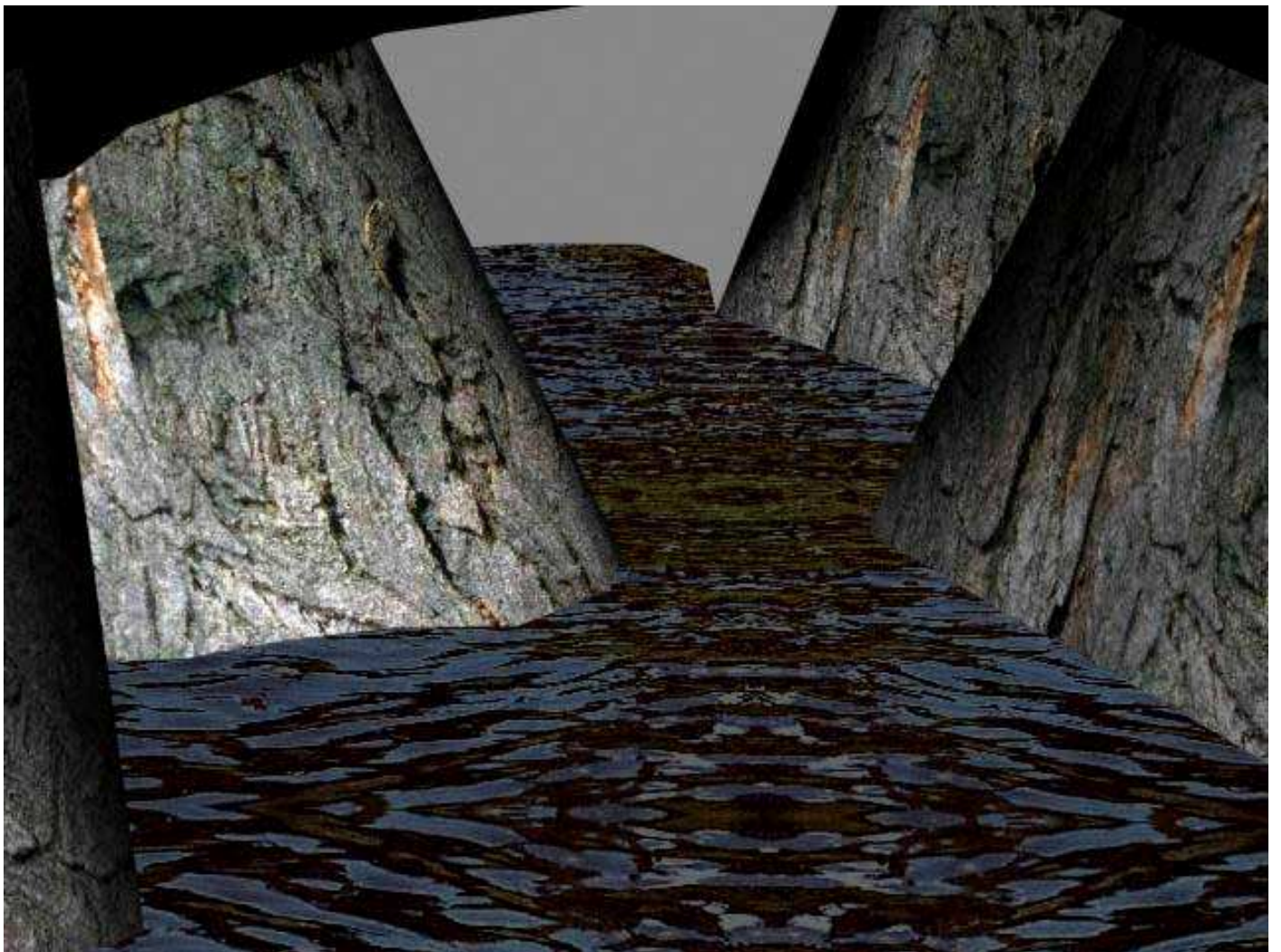












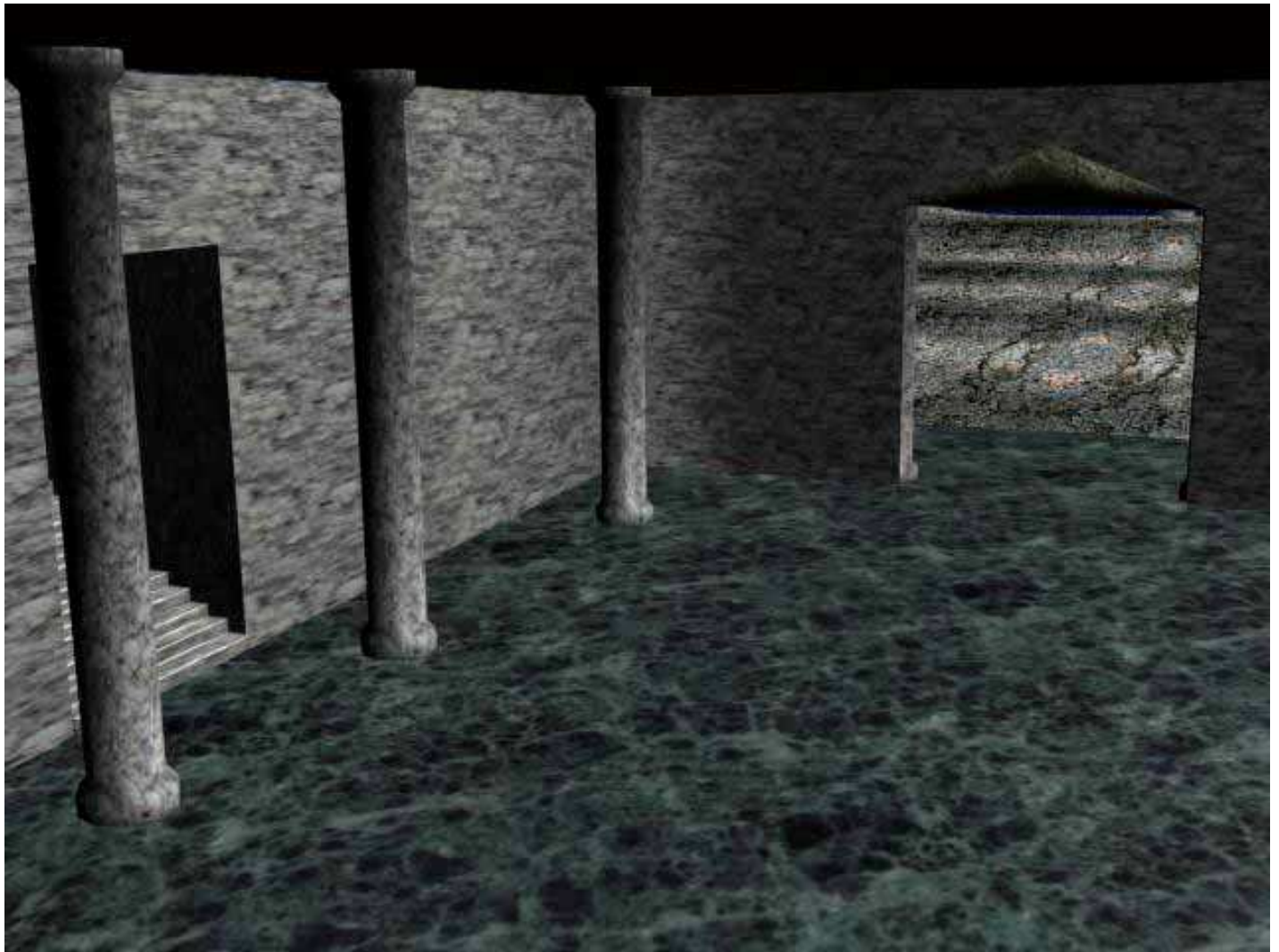


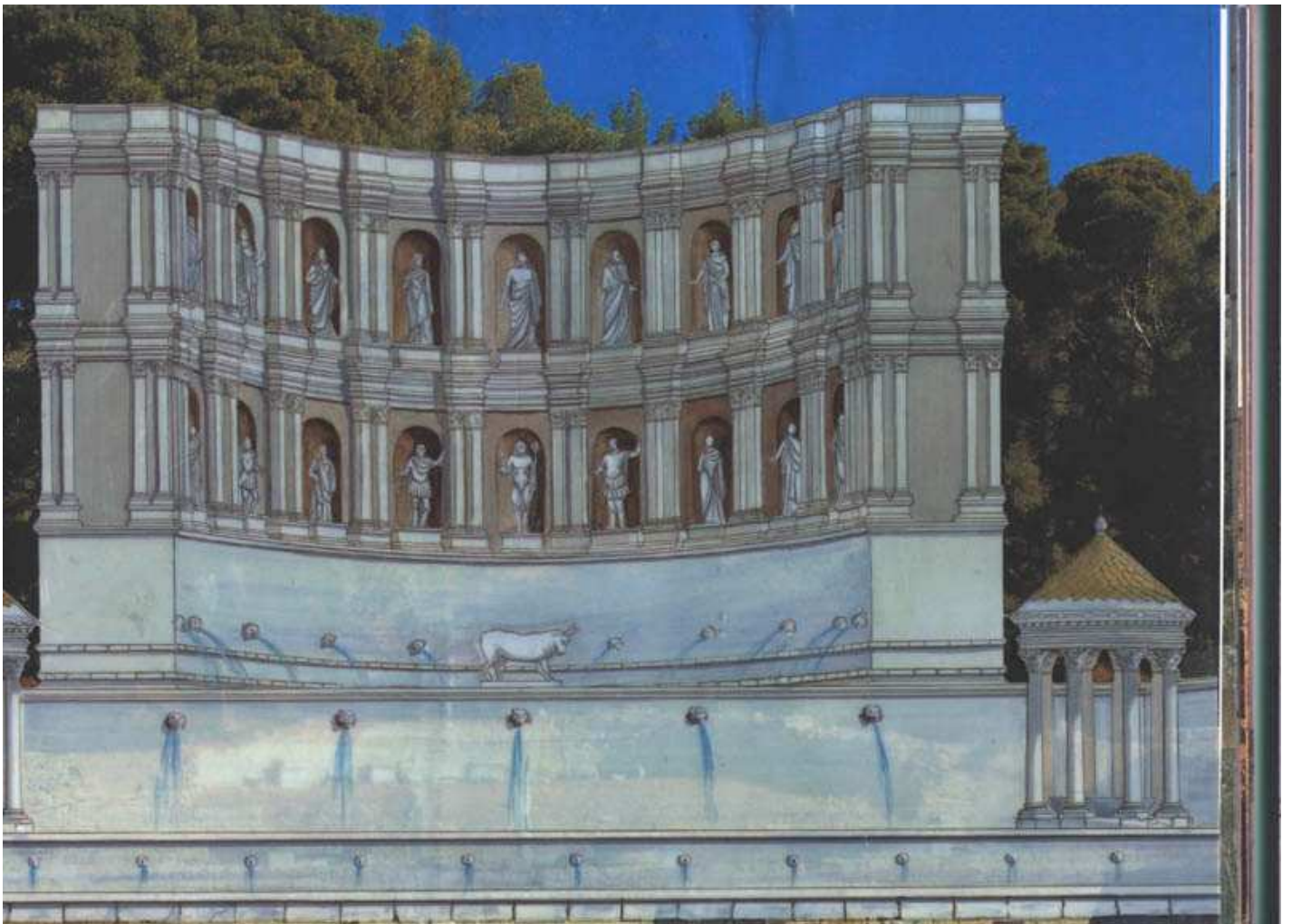
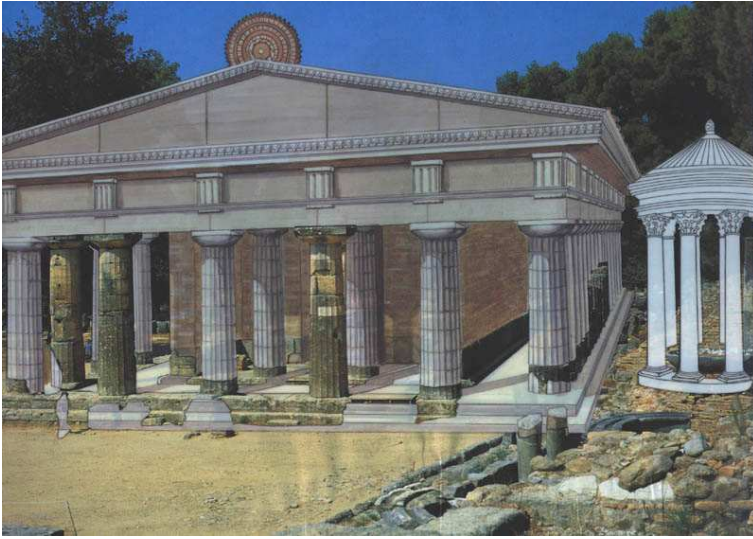
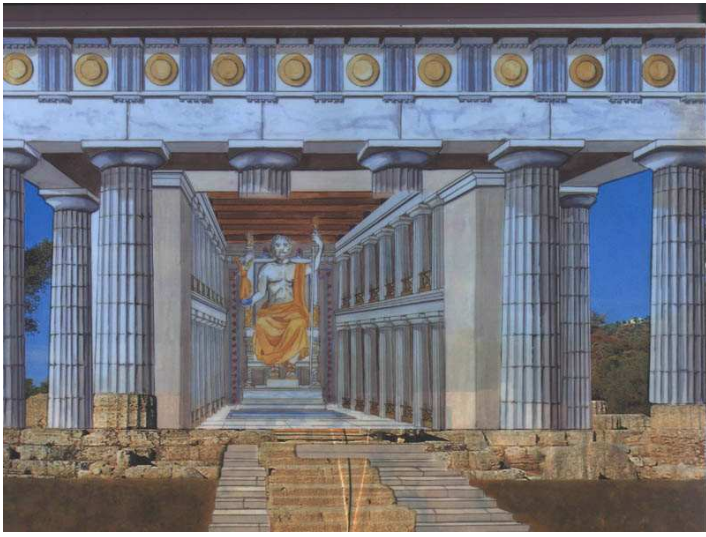


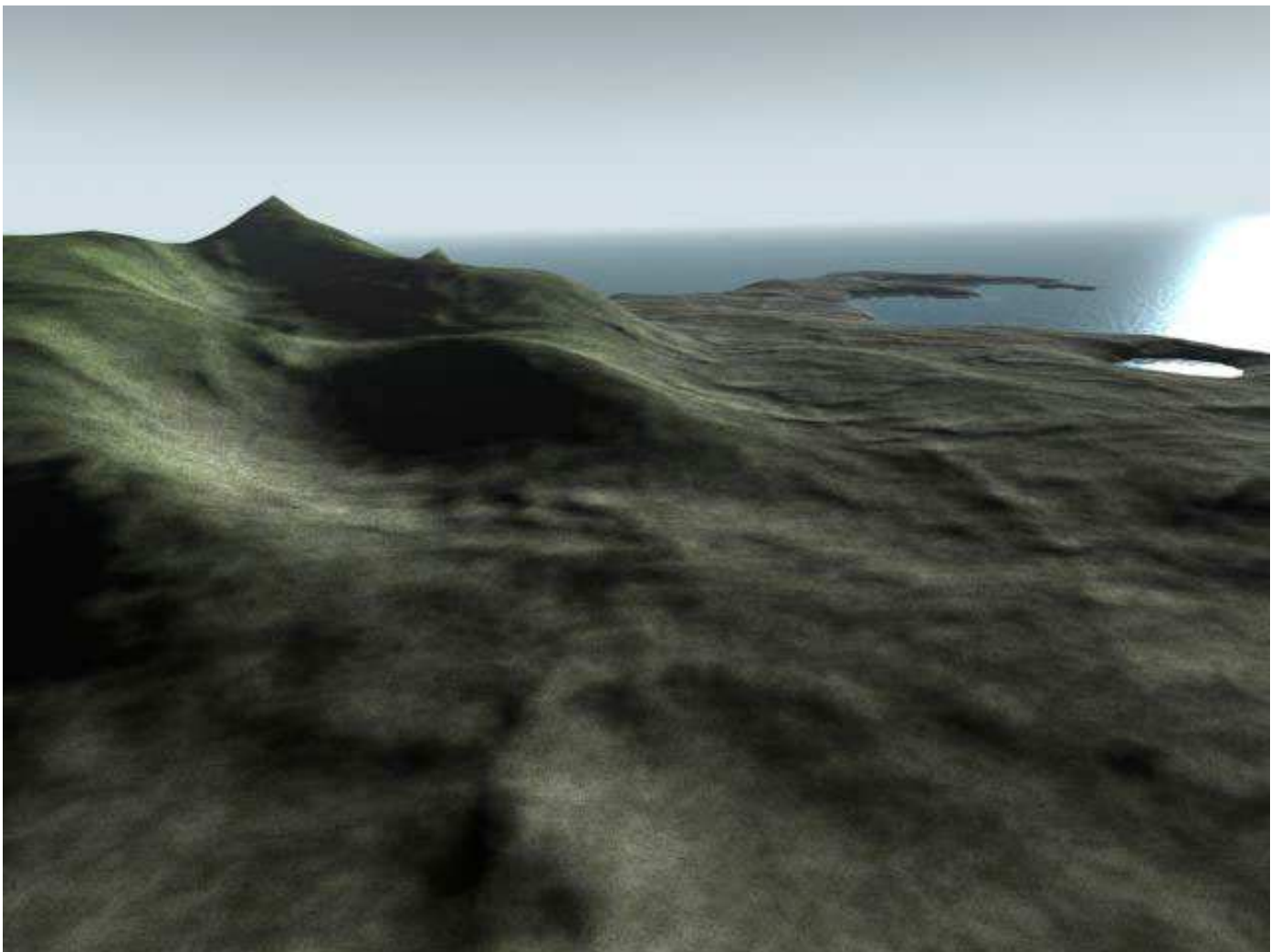


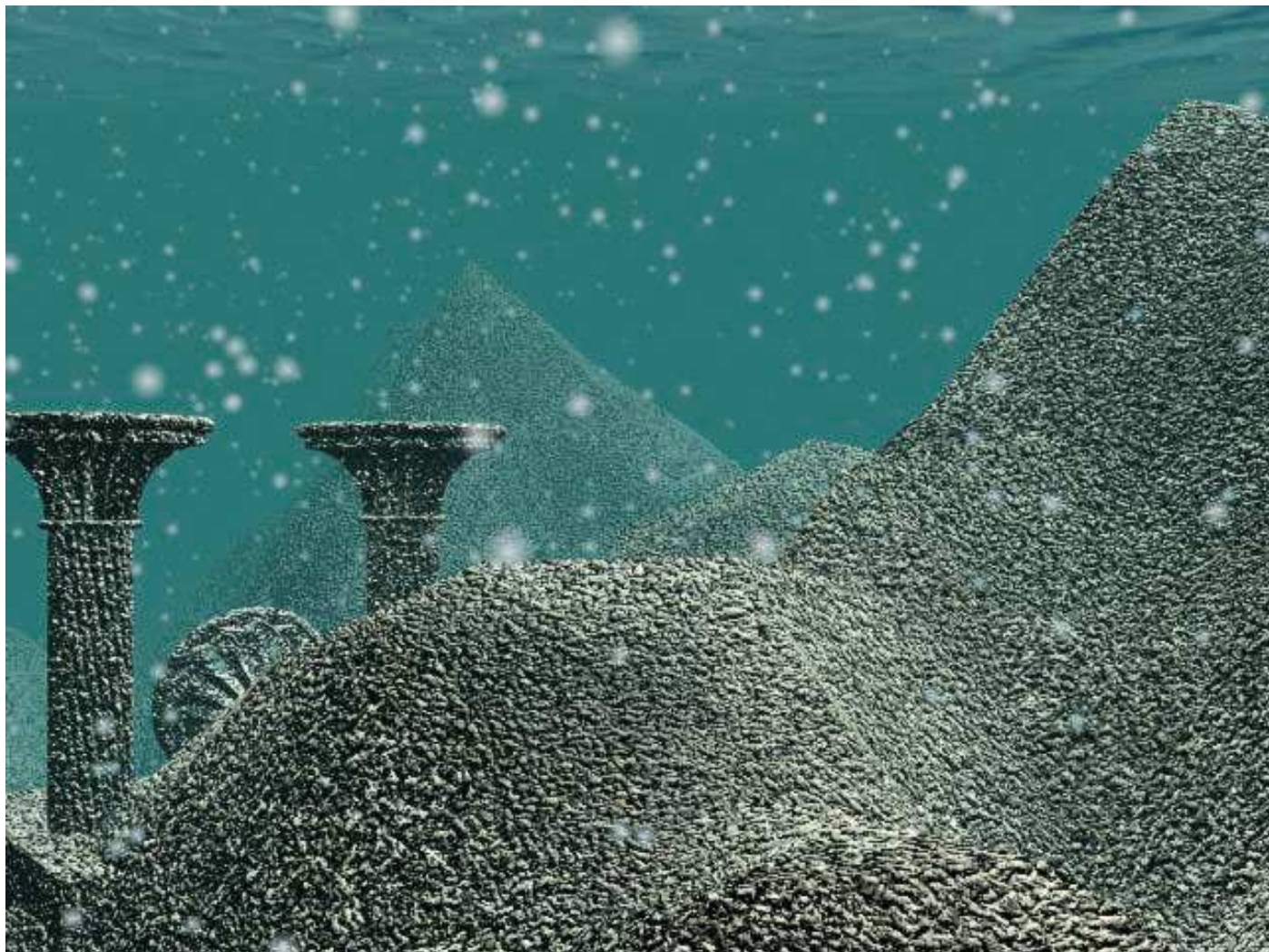




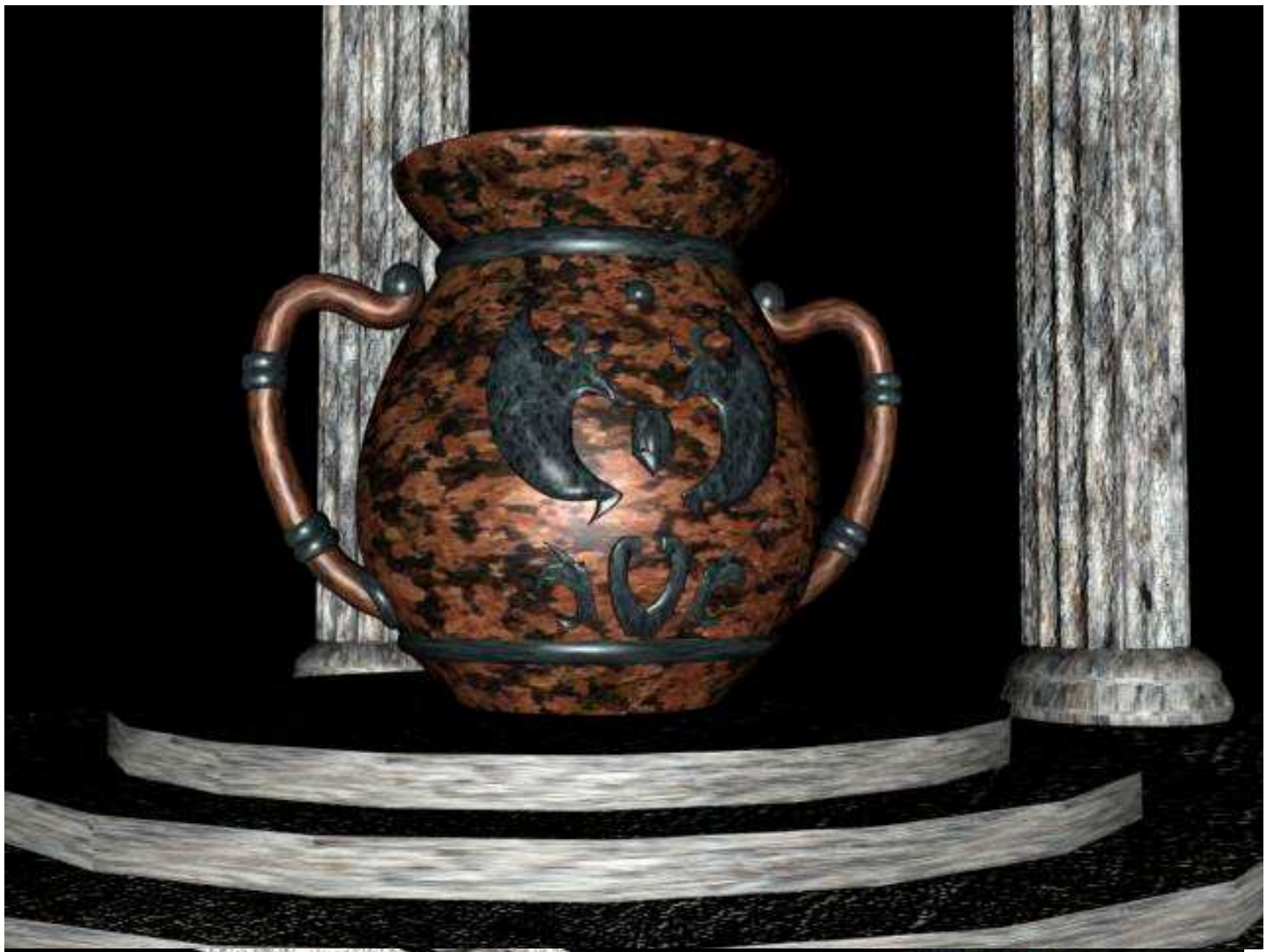










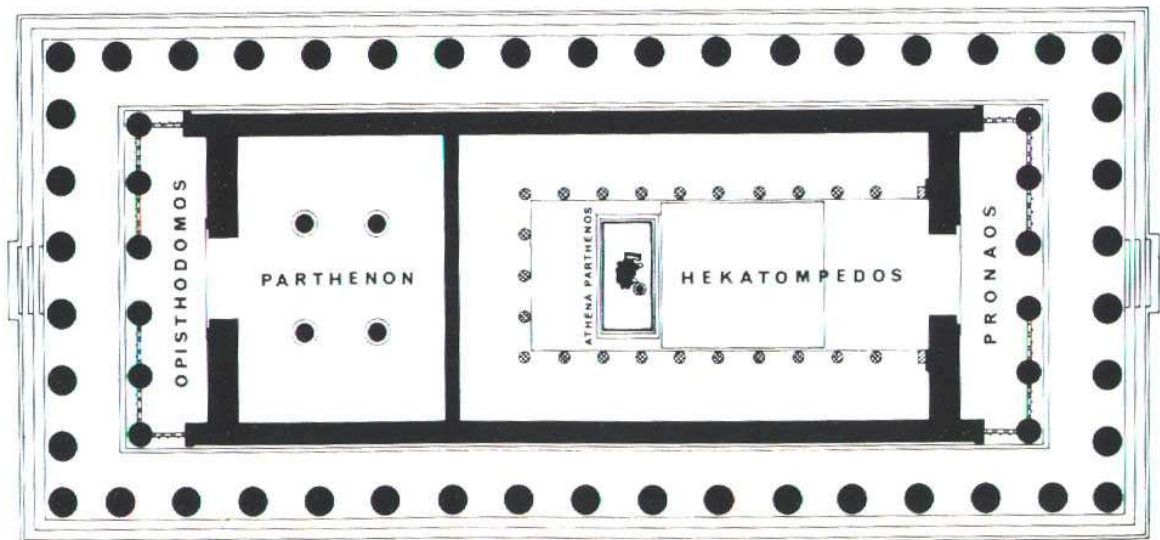
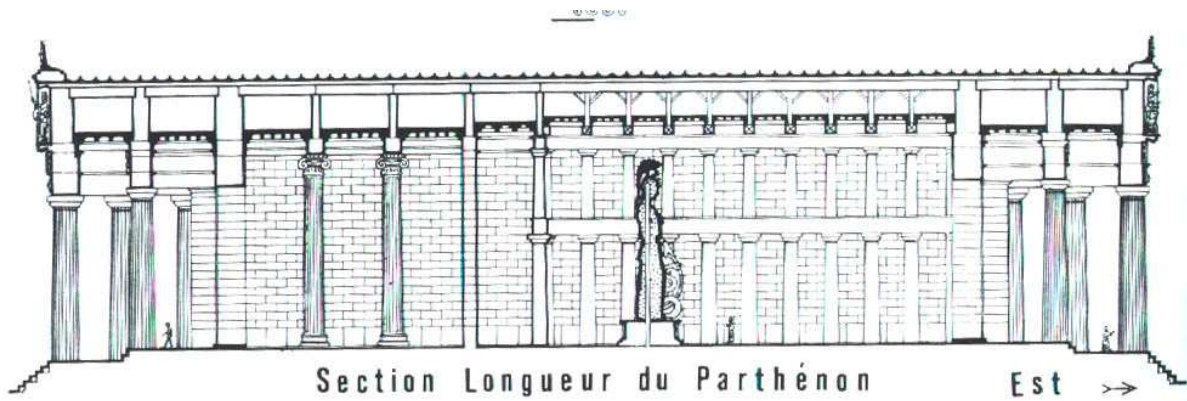




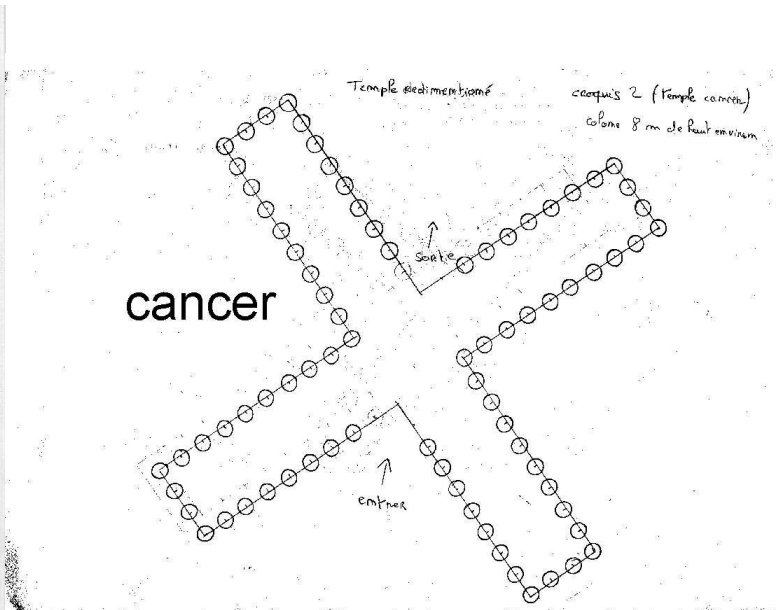
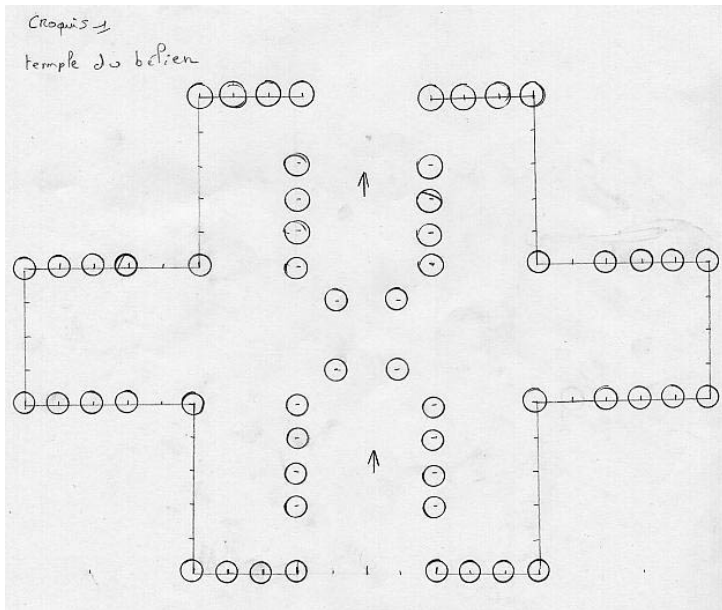
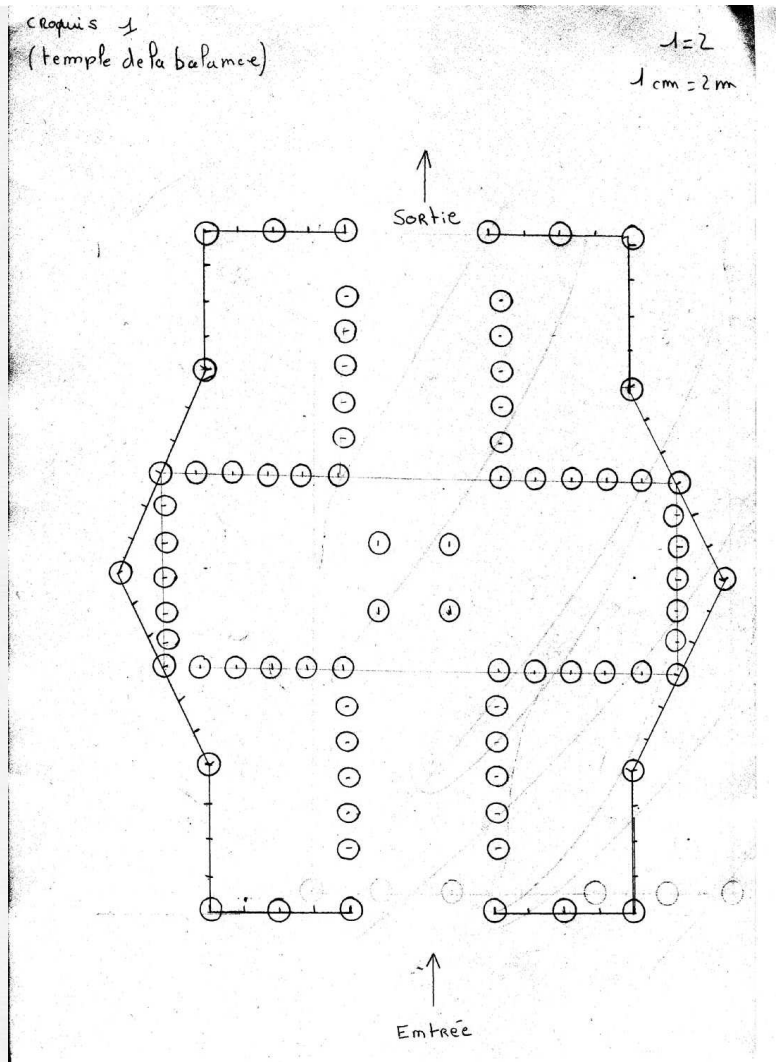
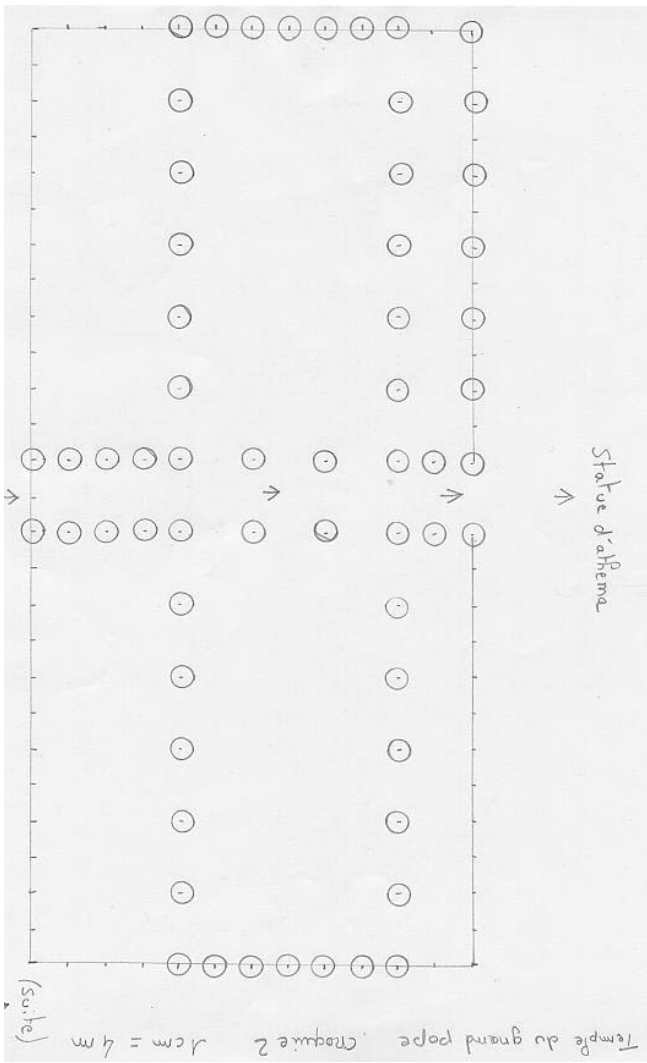








Le Plan du Parthénon



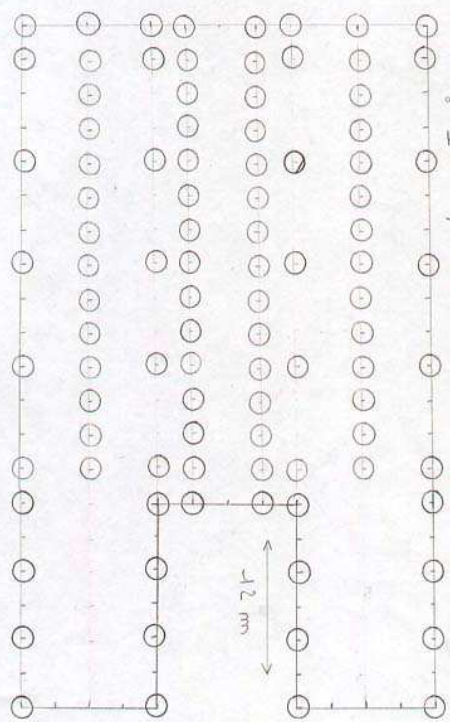
Les 12 maisons des chevaliers d'or sont juste des temples vides, décorés de piliers...

croquis 1
(temple des gêmeaux)

Temple dimensions réelle

1=2

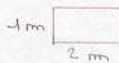
1cm = 2m



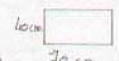
caractéristique du temple:

a) colonne de 8m de hauteur.

b) dalle sup. intérieur:



- dalle mur intérieur:



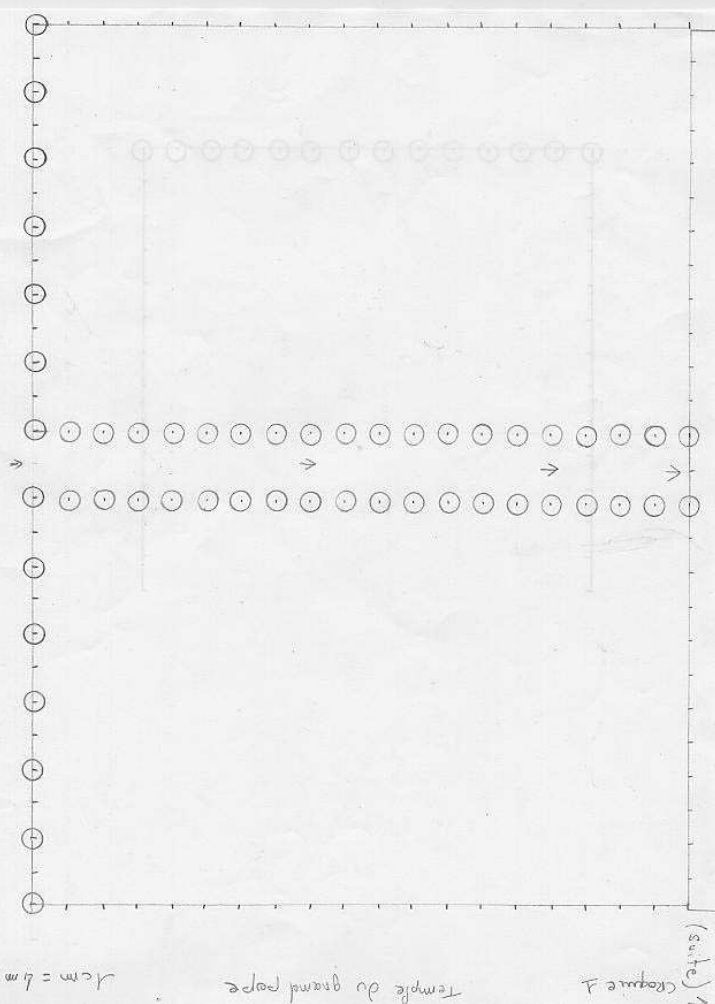
- dalle extérieur (devant le temple et sur le toit du temple).



gêmeaux

Statue des gêmeaux

Statue des gêmeaux



1cm = 6m

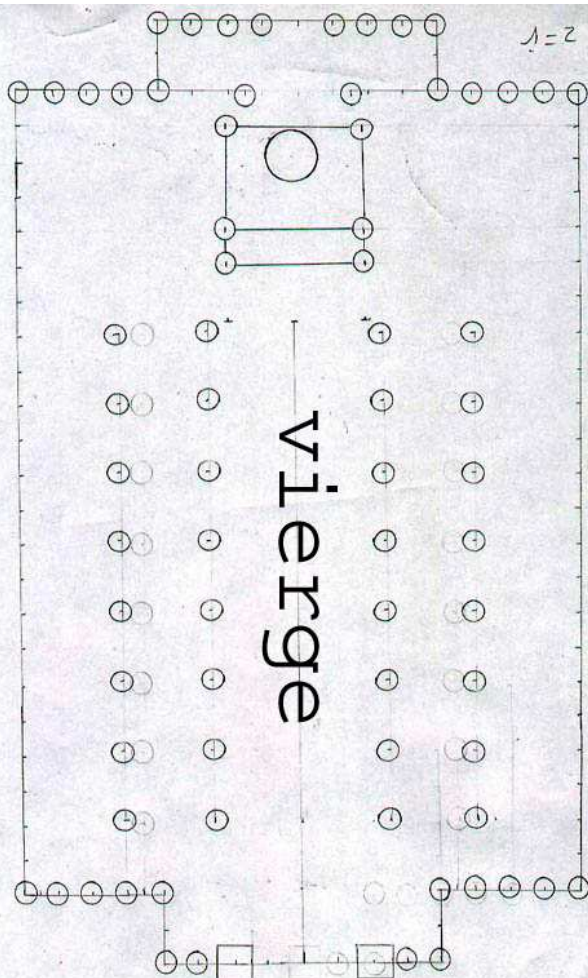
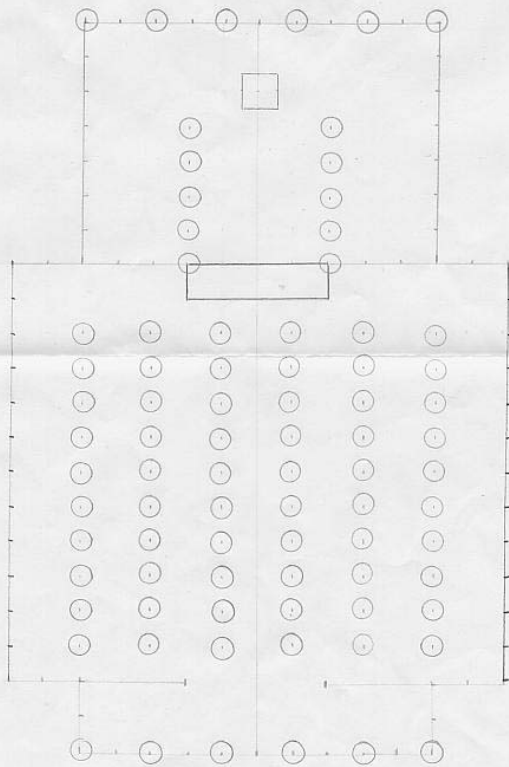
Temple du grand pappe

Croquis 1

croquis 1
(temple du Sagittaire)

1=2

1cm = 2m



vierge

1=2

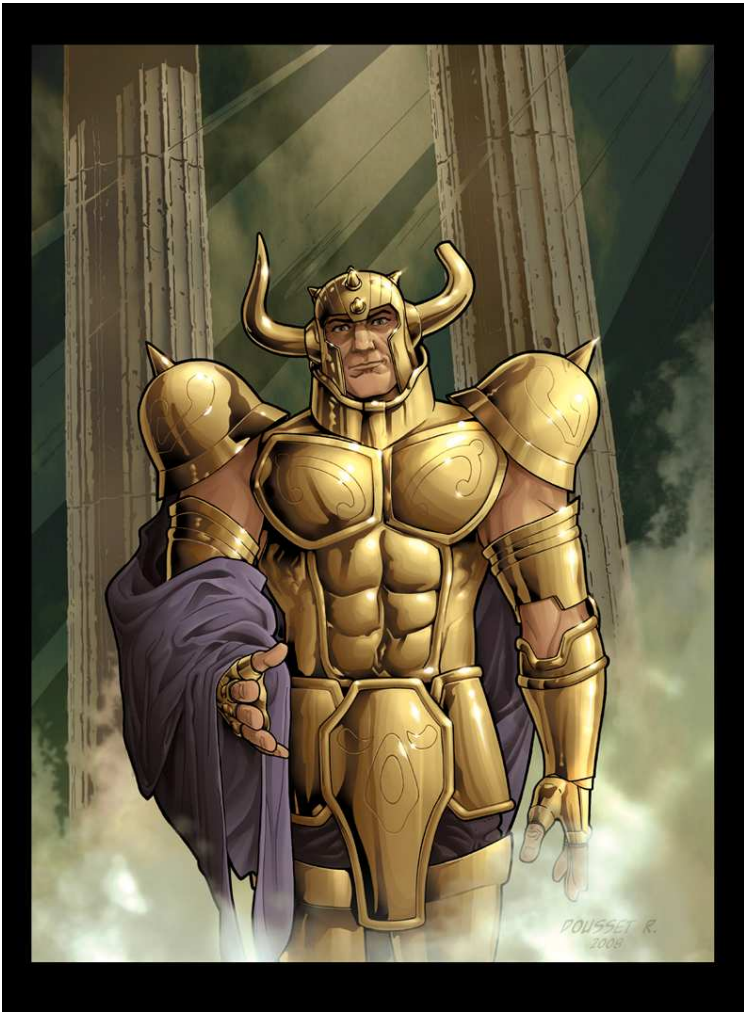
(suite)

Les Chevaliers du Zodiaque

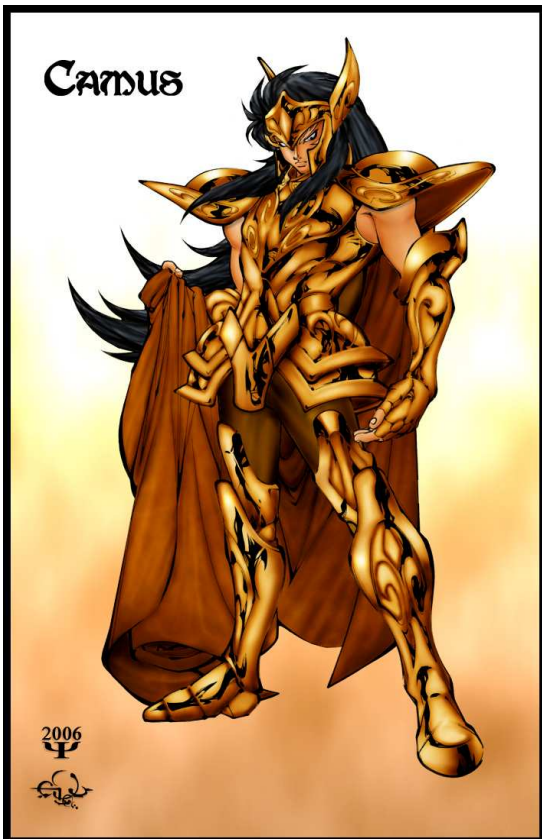
Armures divines



Armures d'Or











Copyright Liquid Entertainment and Codemasters





Armures d'Argent





Silver Grater Saint



Silver Ara Saint



Perceval

NEO
SAINT SEIYA
LES CHEVALIERS DU ZODIAQUE

Neo Saint Seiya © Camille Addams 2001



Pâris

NEO
SAINT SEIYA
LES CHEVALIERS DU ZODIAQUE

Neo Saint Seiya © Camille Addams 2001



Silver Saint du Sculpteur

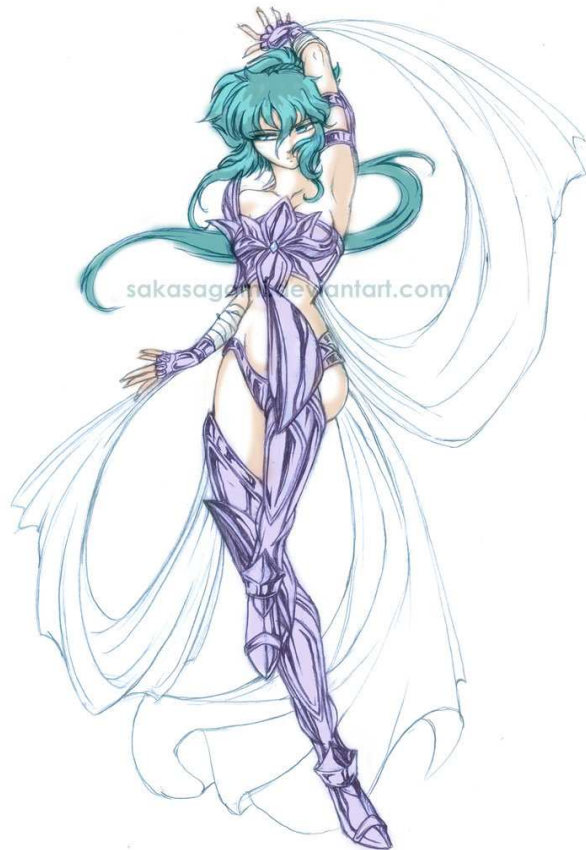


Démétrios



Neo Saint Seiya © Camille Addams 2002

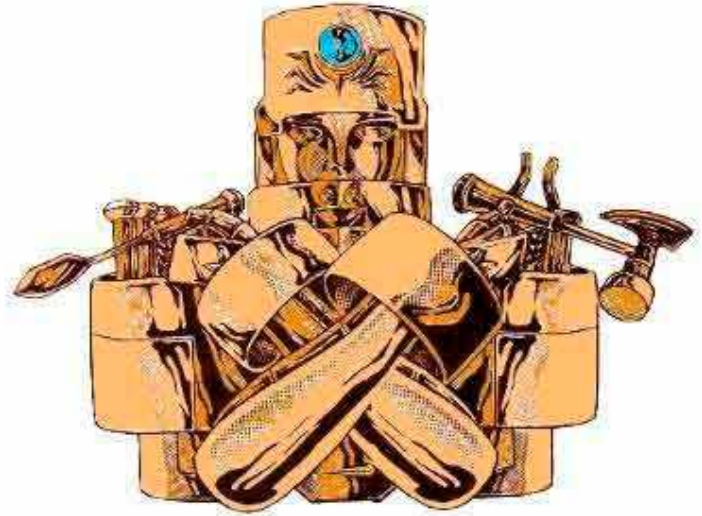
Armures de Bronze



Bronze Saint du Burin

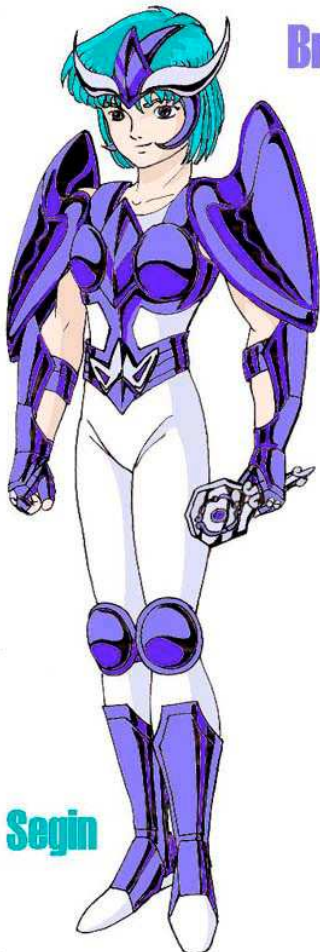


Wayland

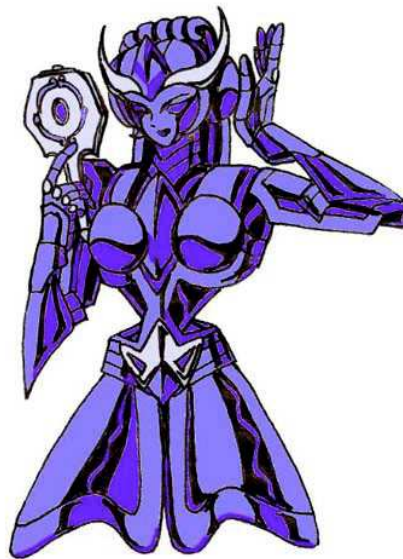


Neo Saint Seiya © Camille Addams 2002

Bronze Saint de Cassiopée



Segin



Neo Saint Seiya © Camille Addams 2002



Signature

Bronze Saint de la
Couronne Australe



Daphnis



NEO
SAINT SEIYA
LES CHEVALIERS DU ZODIAC

Neo Saint Seiya © Camille Addams 2002

Bronze Saint de l'Eridan



Alphée



NEO
SAINT SEIYA
LES CHEVALIERS DU ZODIAC

Neo Saint Seiya © Camille Addams 2002



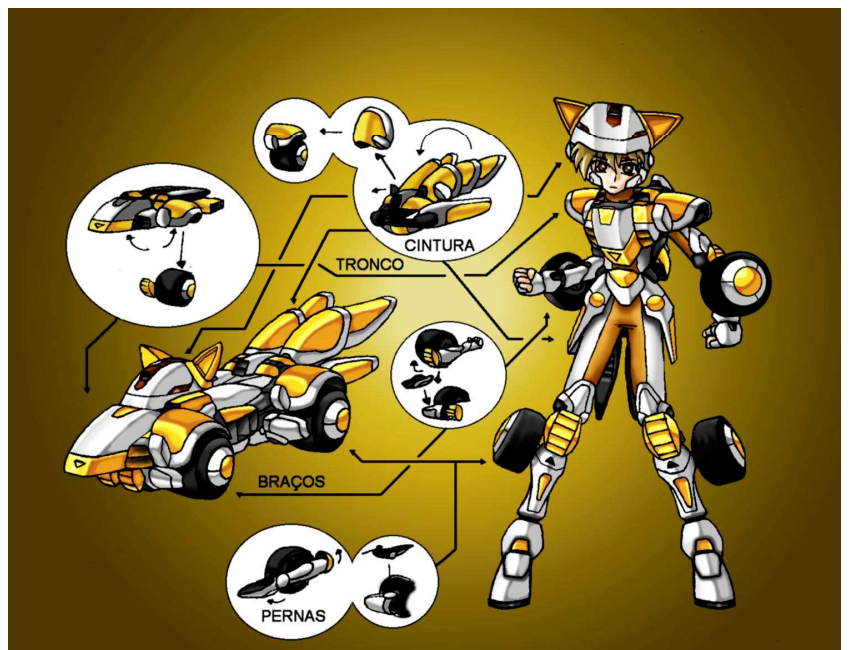
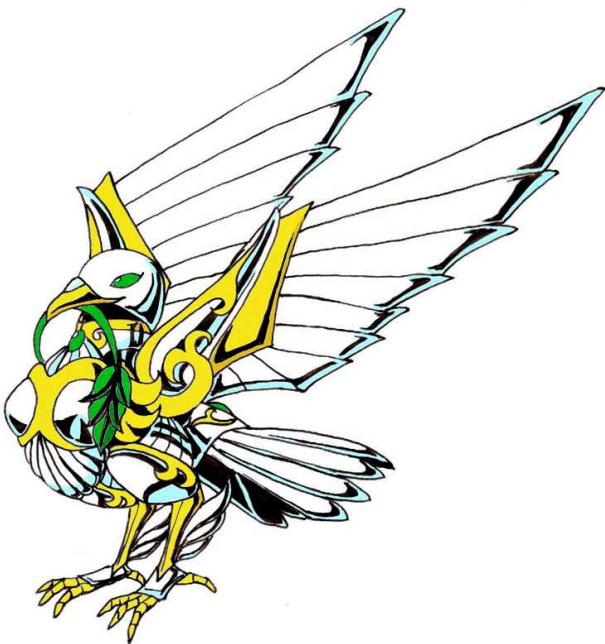
*Cynara del Carciofo
Heroes di Ercole*



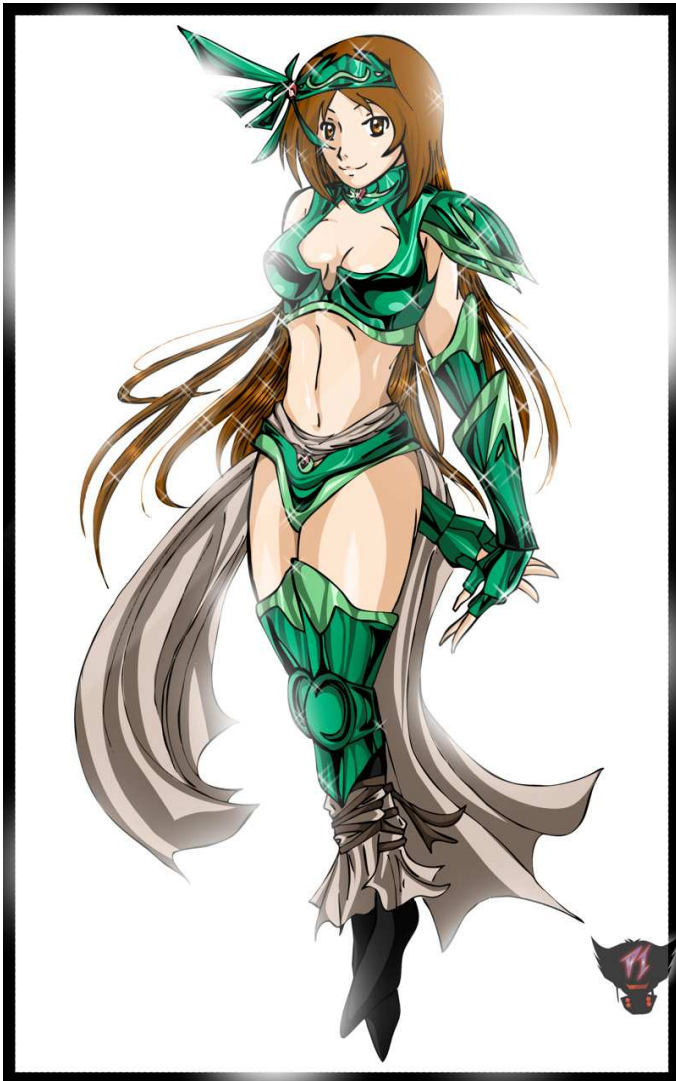
Neo Saint Seiya ©Nirti2009



Les armures sont transportées dans des urnes sacrées, portées comme des sacs à dos.



La présence de technologie (parfois évoluée) sur certaines armures ne semble étonner personne, Même si l'ensemble des habitants du sanctuaire vit de façon spartiate, comme au temps de l'antiquité terrestre.



New Bronze Hydra Saint

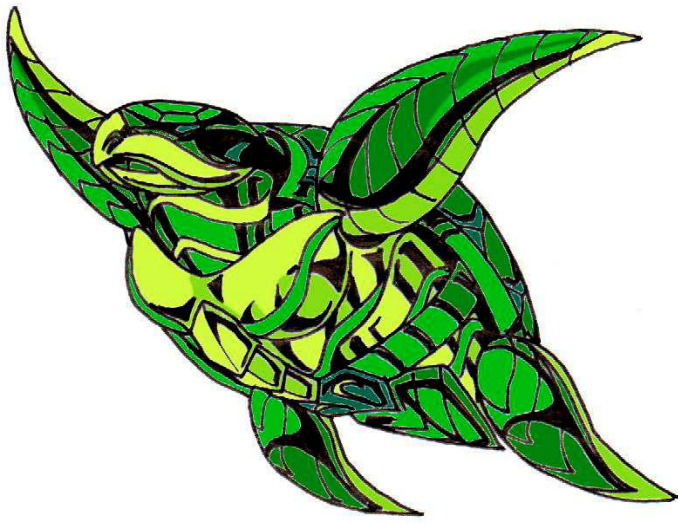
**NEO
SAINT SEIYA**
LES CHEVALIERS DU ZODIAC



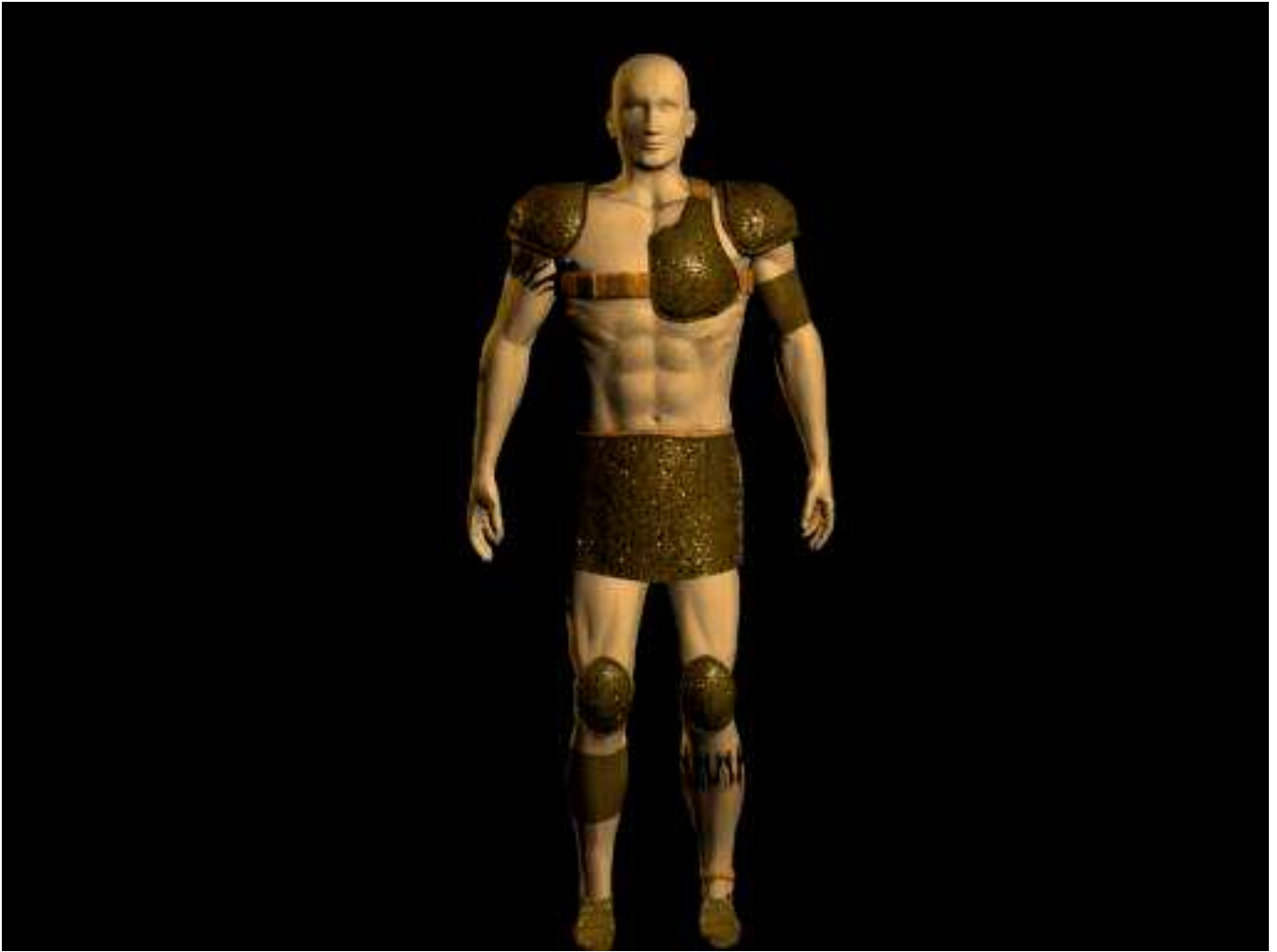
Ichi





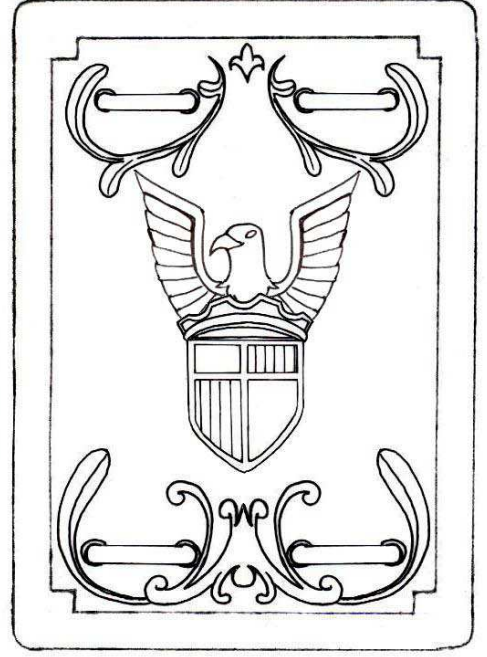
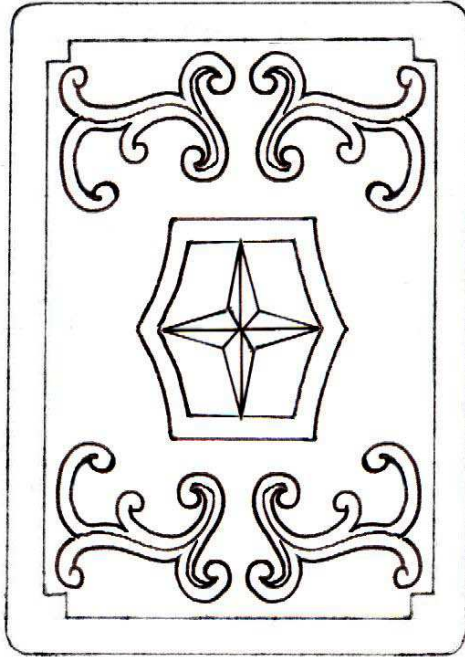
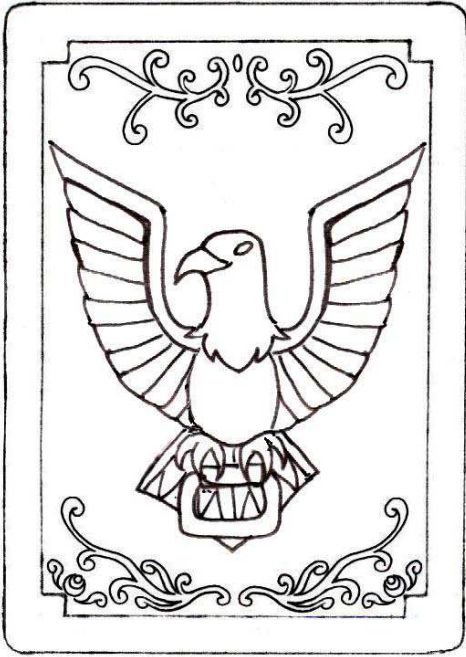


Apprentis & soldats

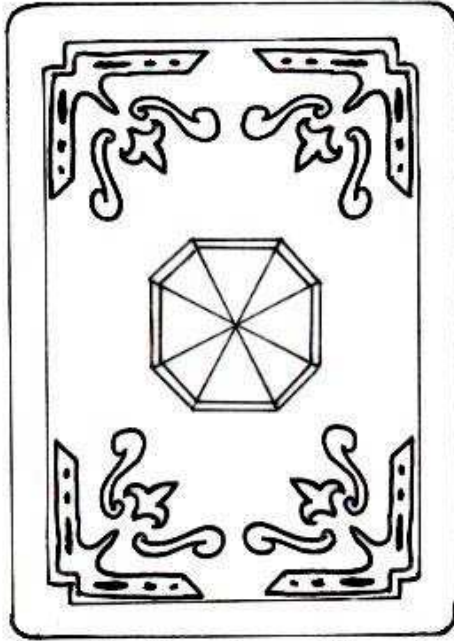




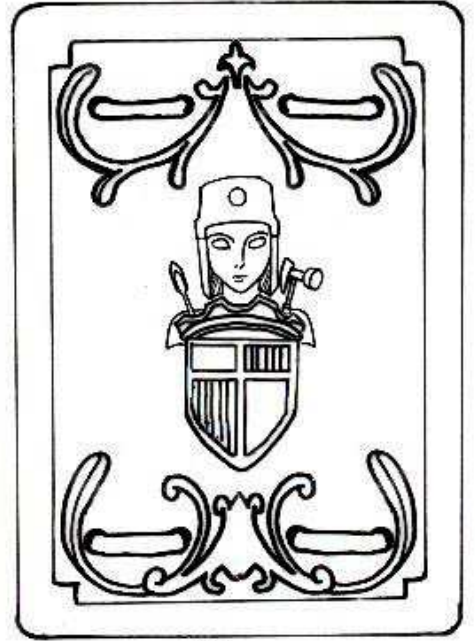
Urnes sacrées



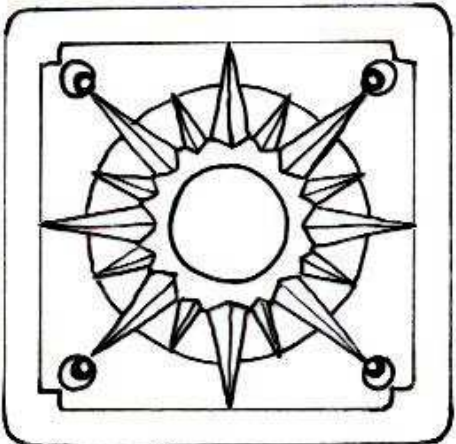
Face



Cotés Droit et Gauche

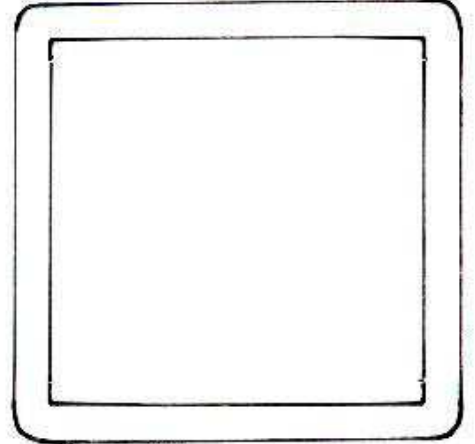


Dos

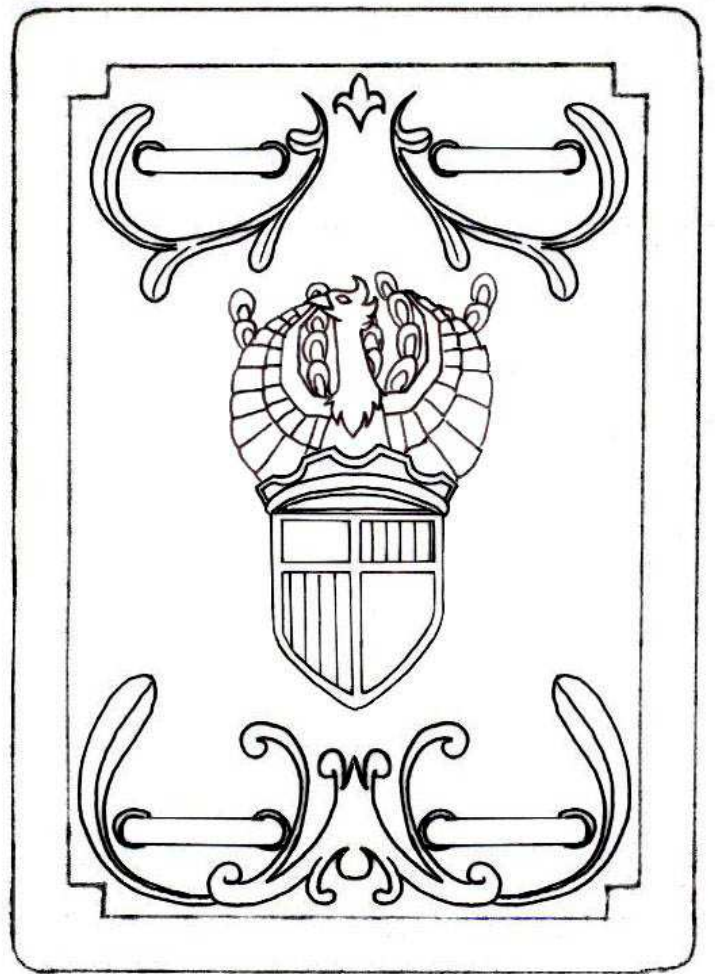
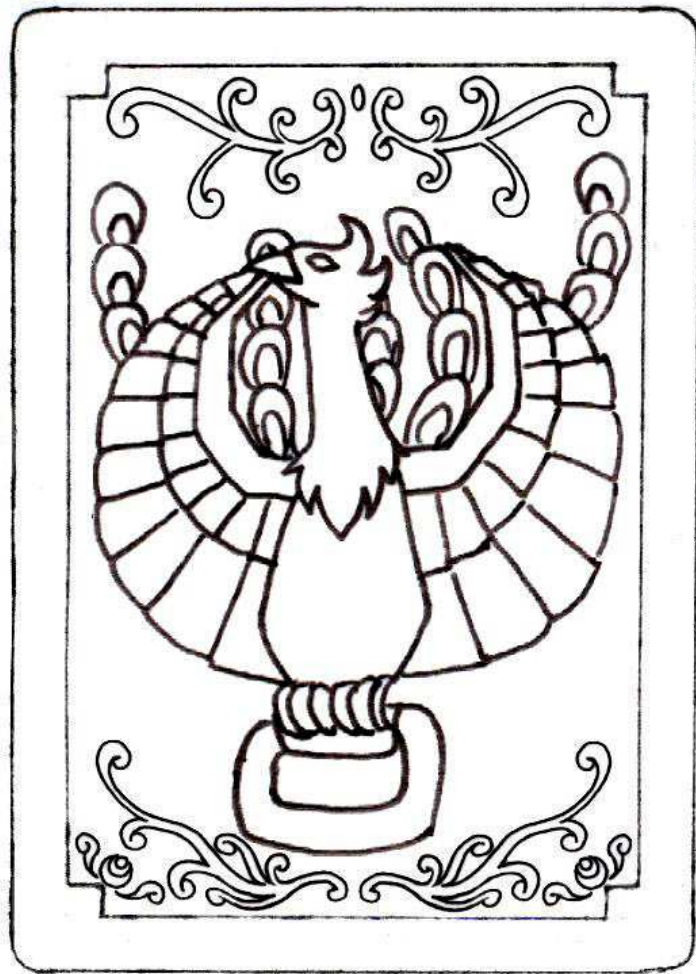
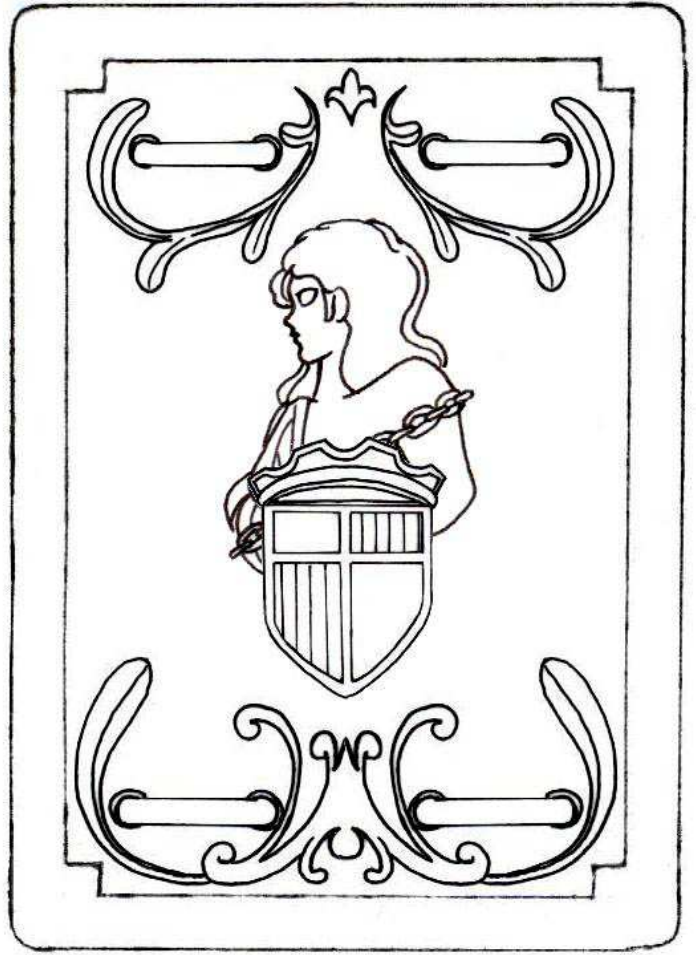


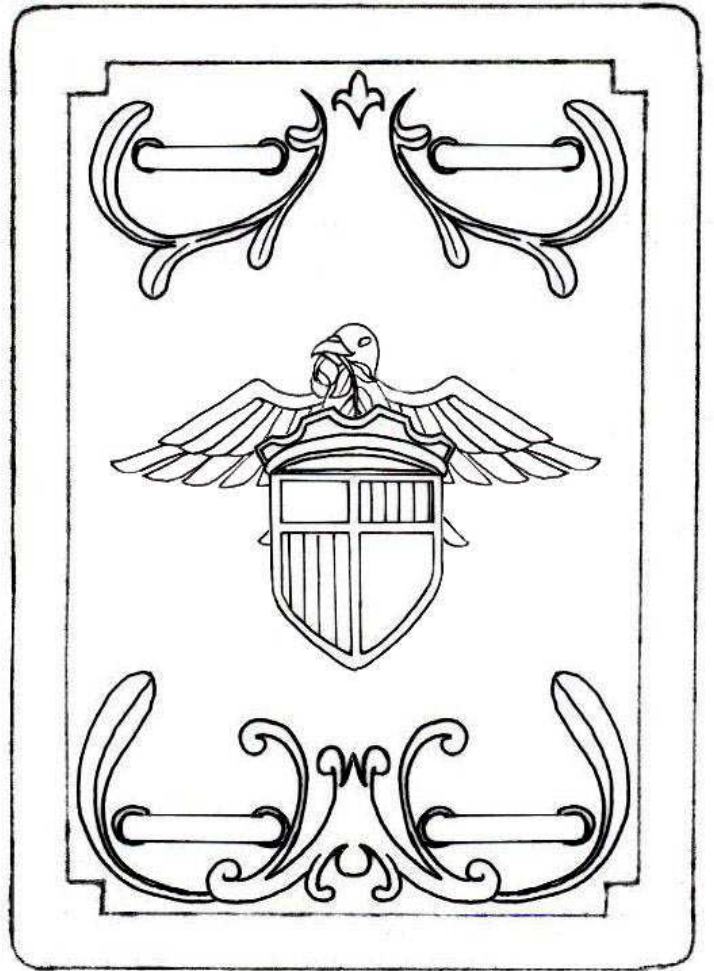
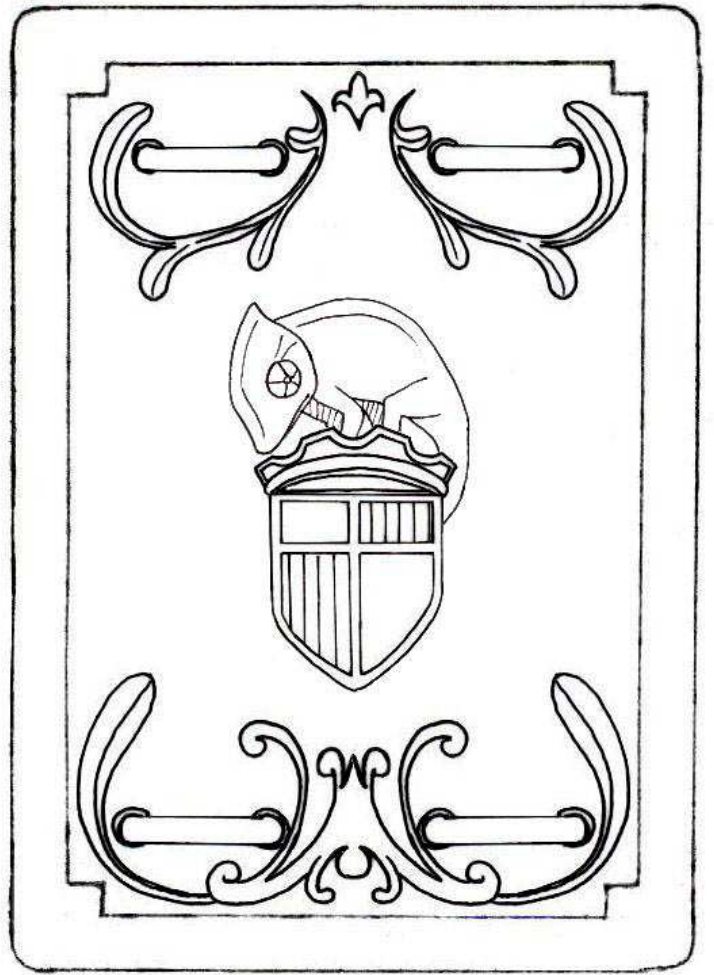
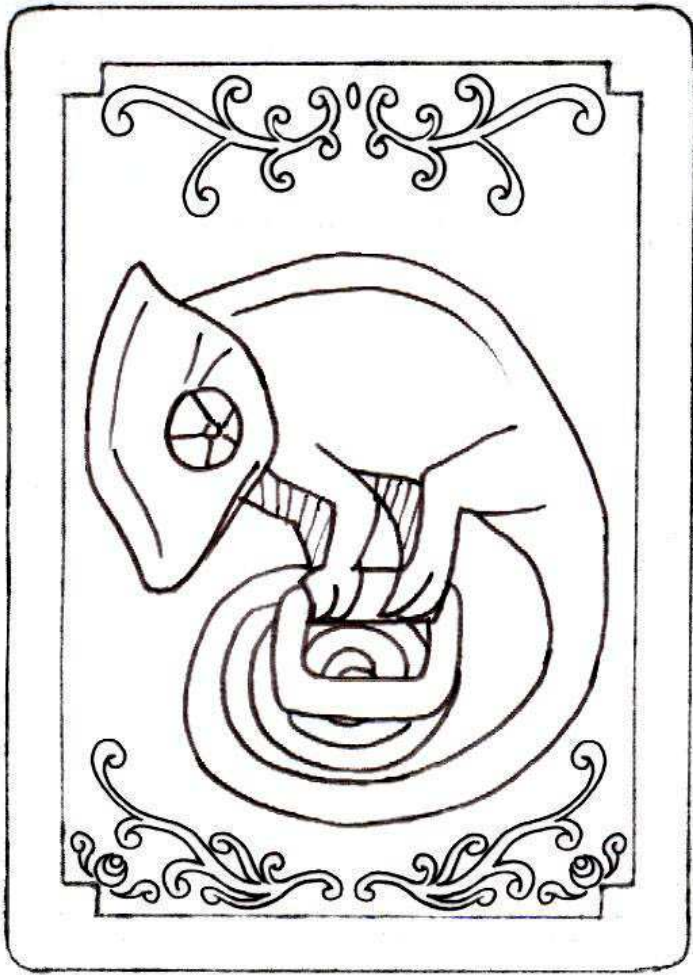
Dessus

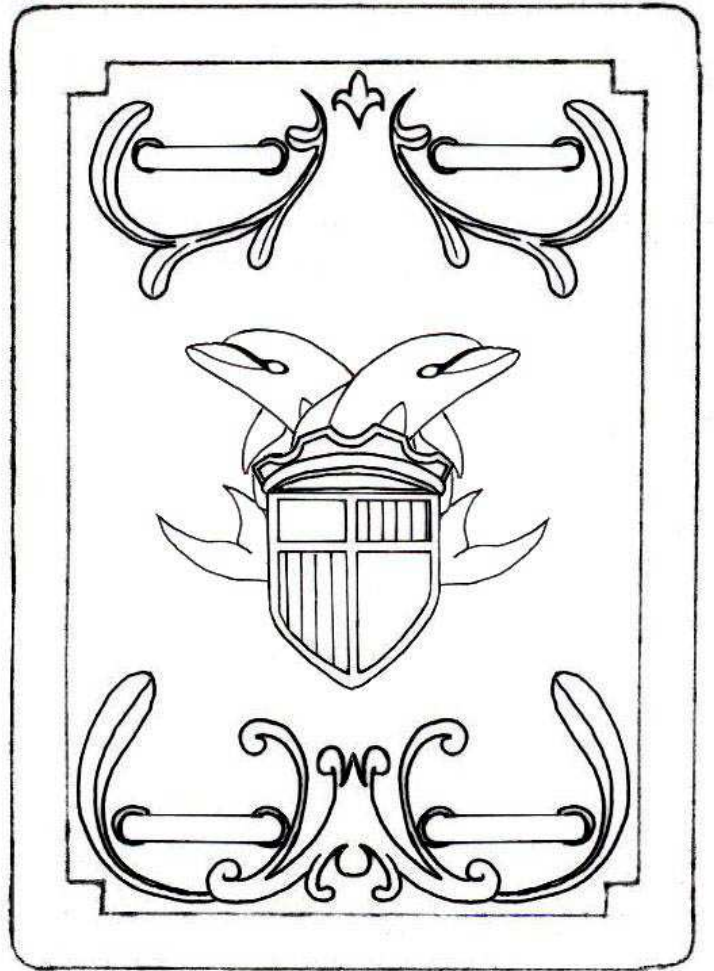
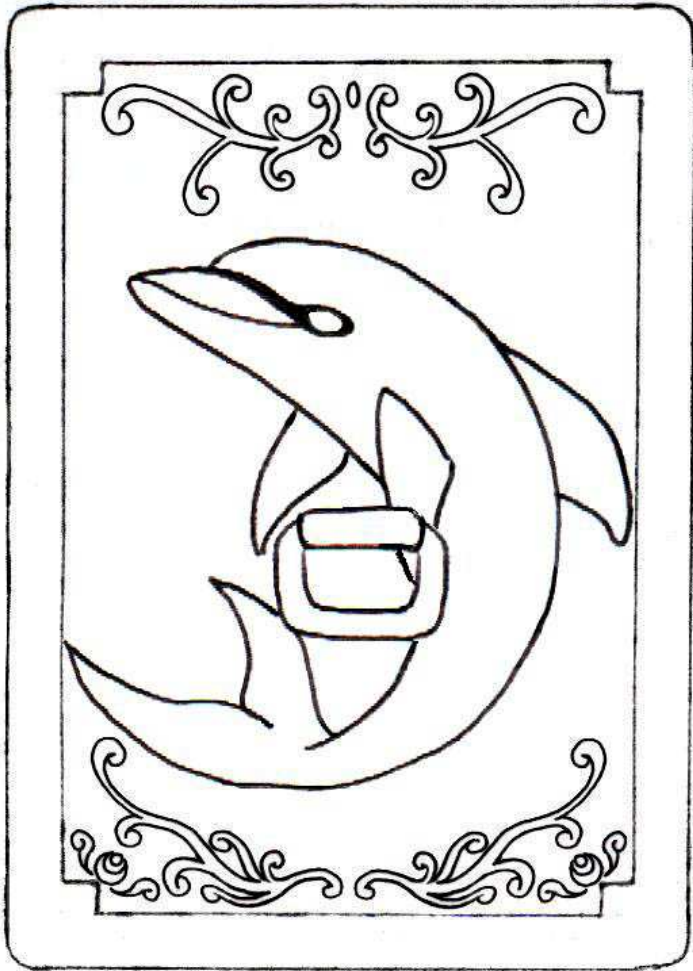
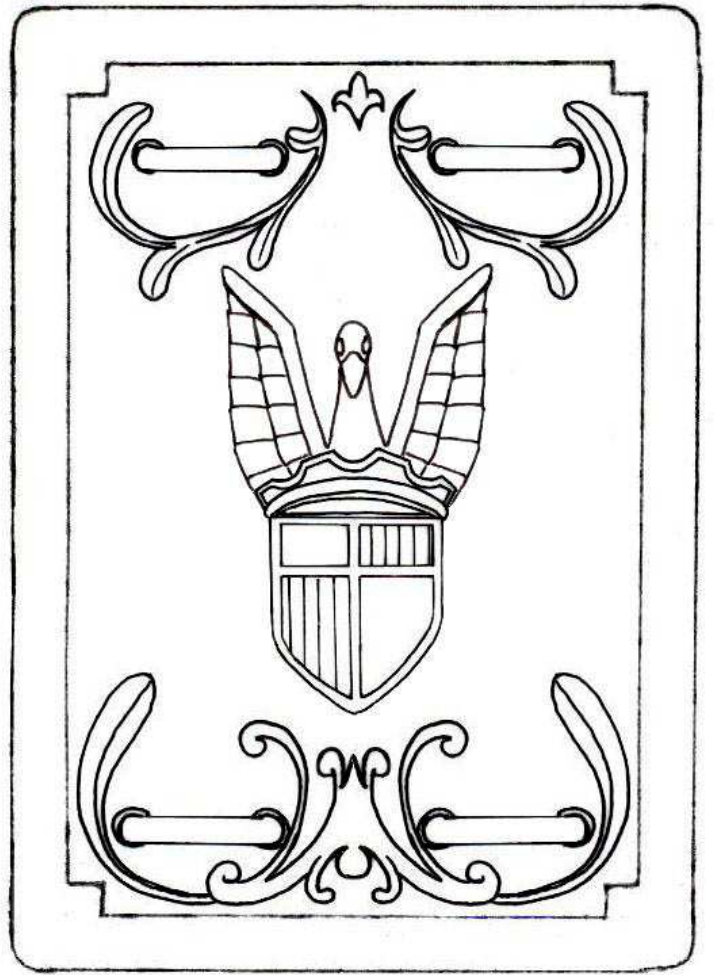
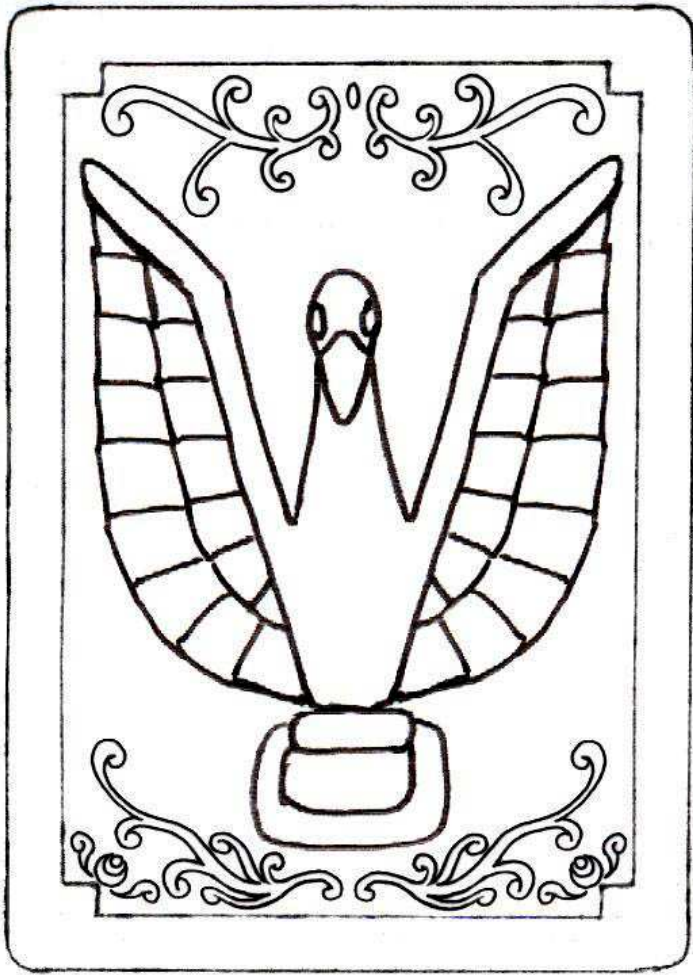
Cloth Box
du
BURIN

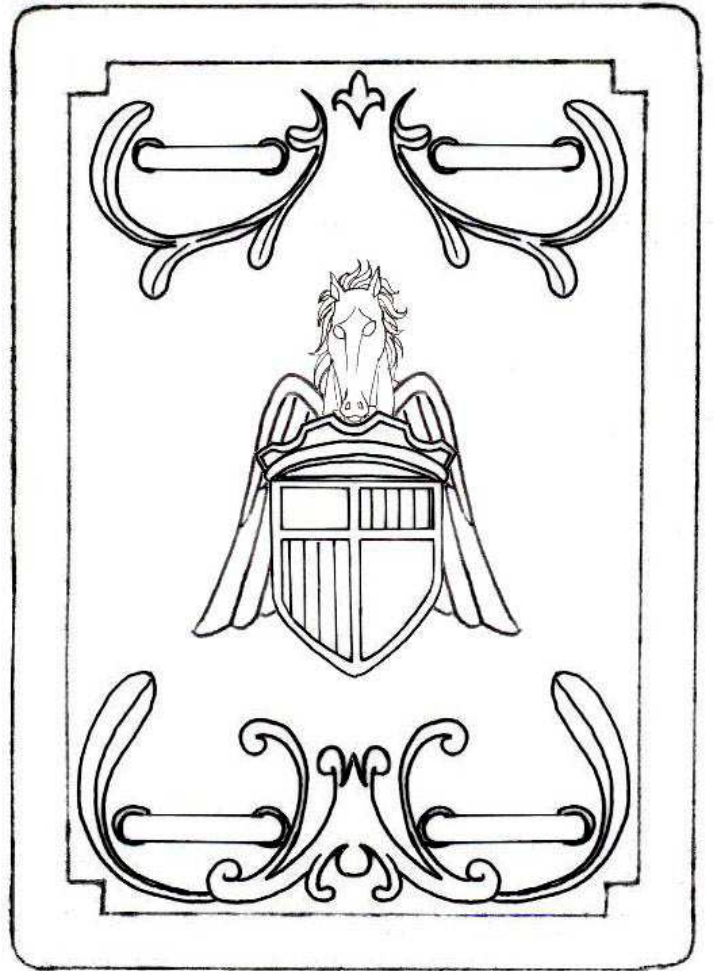
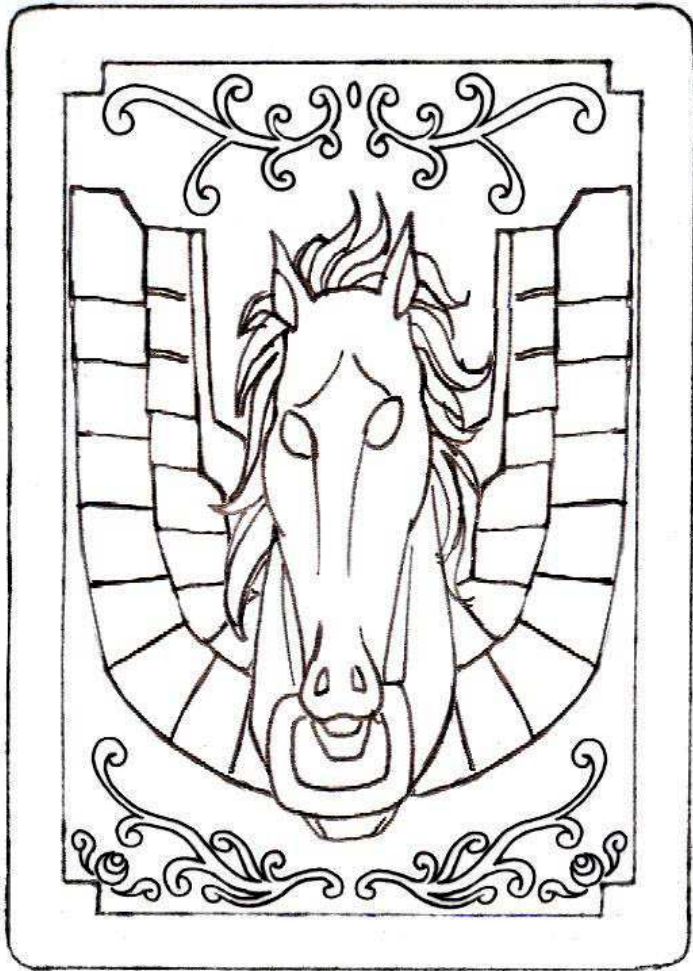
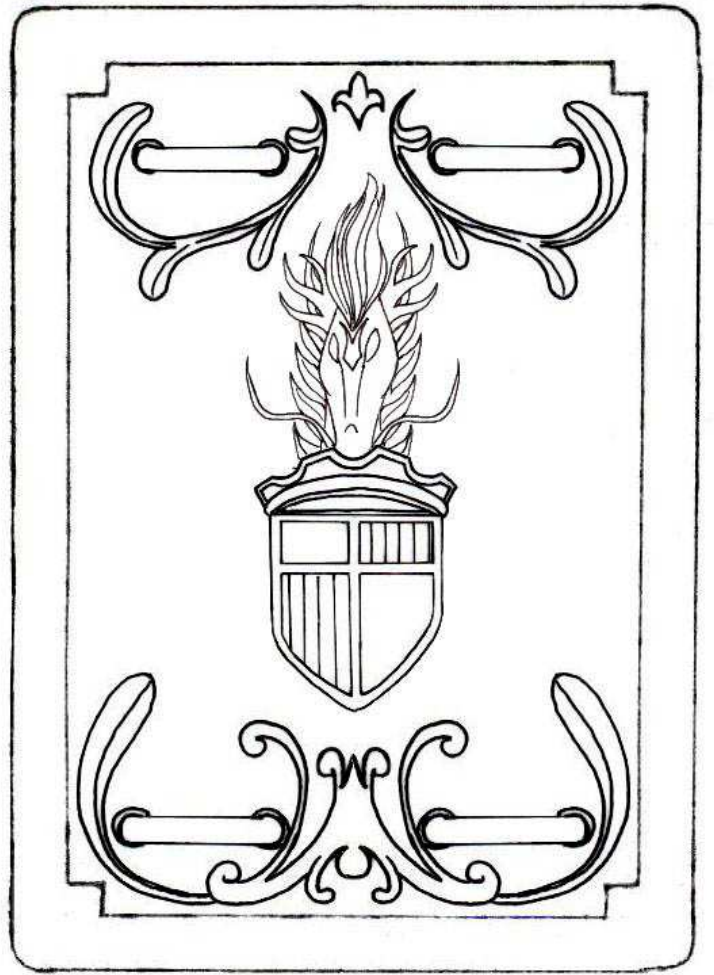


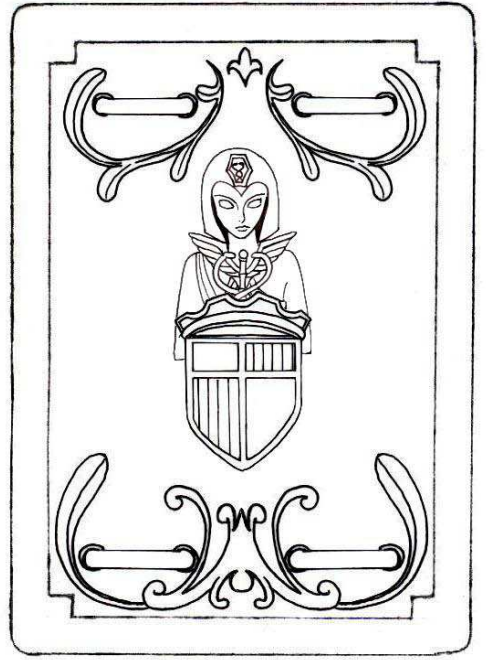
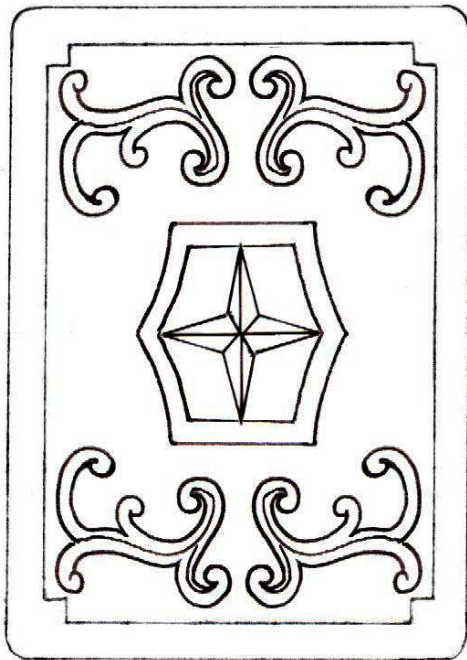
Dessous



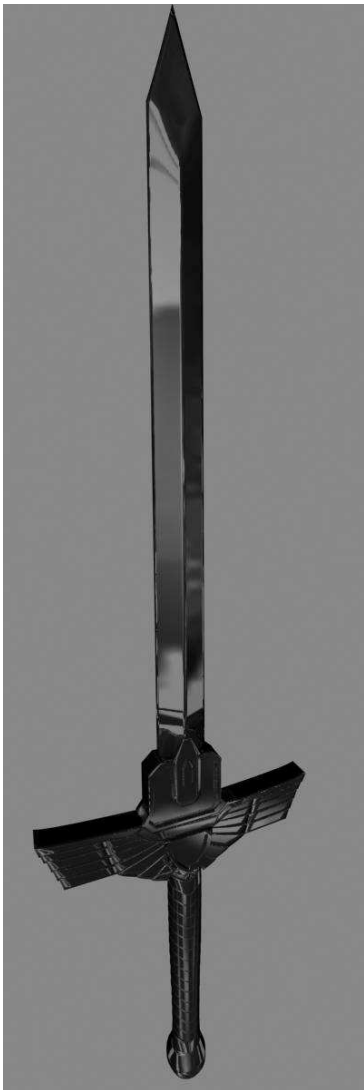








Outils, armes & accessoires





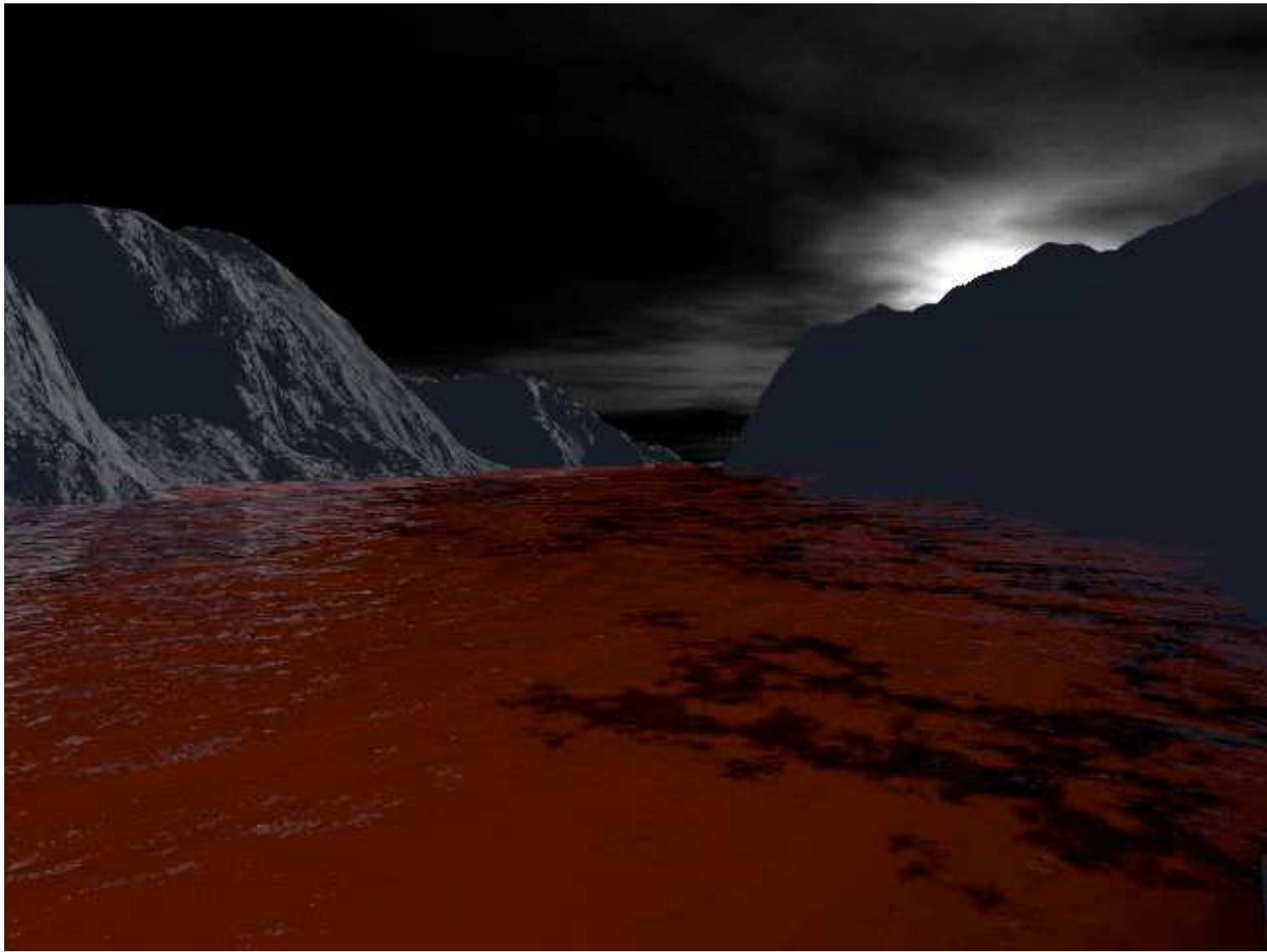


Embarcation des héros



Le STYX





W. Wallace 08

L'équipage des Héros



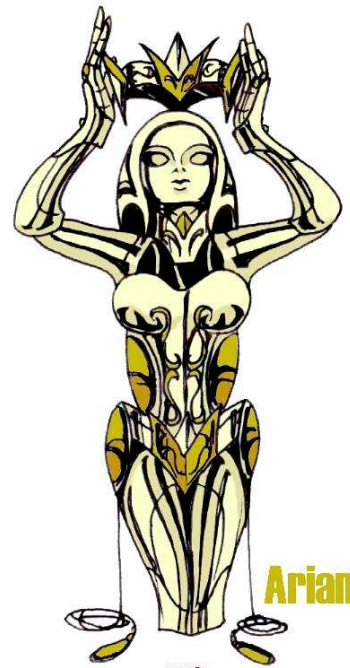
Capitaine Ichthys, Mariner du panthéon de Poséidon



Viviane

Viviane adversaire « repêchée » de Corina au tournoi

Bronze Saint de la Couronne Boréale



Ariane

NEO
SAINT SEIYA
LES CHEVALIERS DU ZODIAQUE

Néo Saint Seiya © Camille Addams 2002

Bronze Saint du Paon

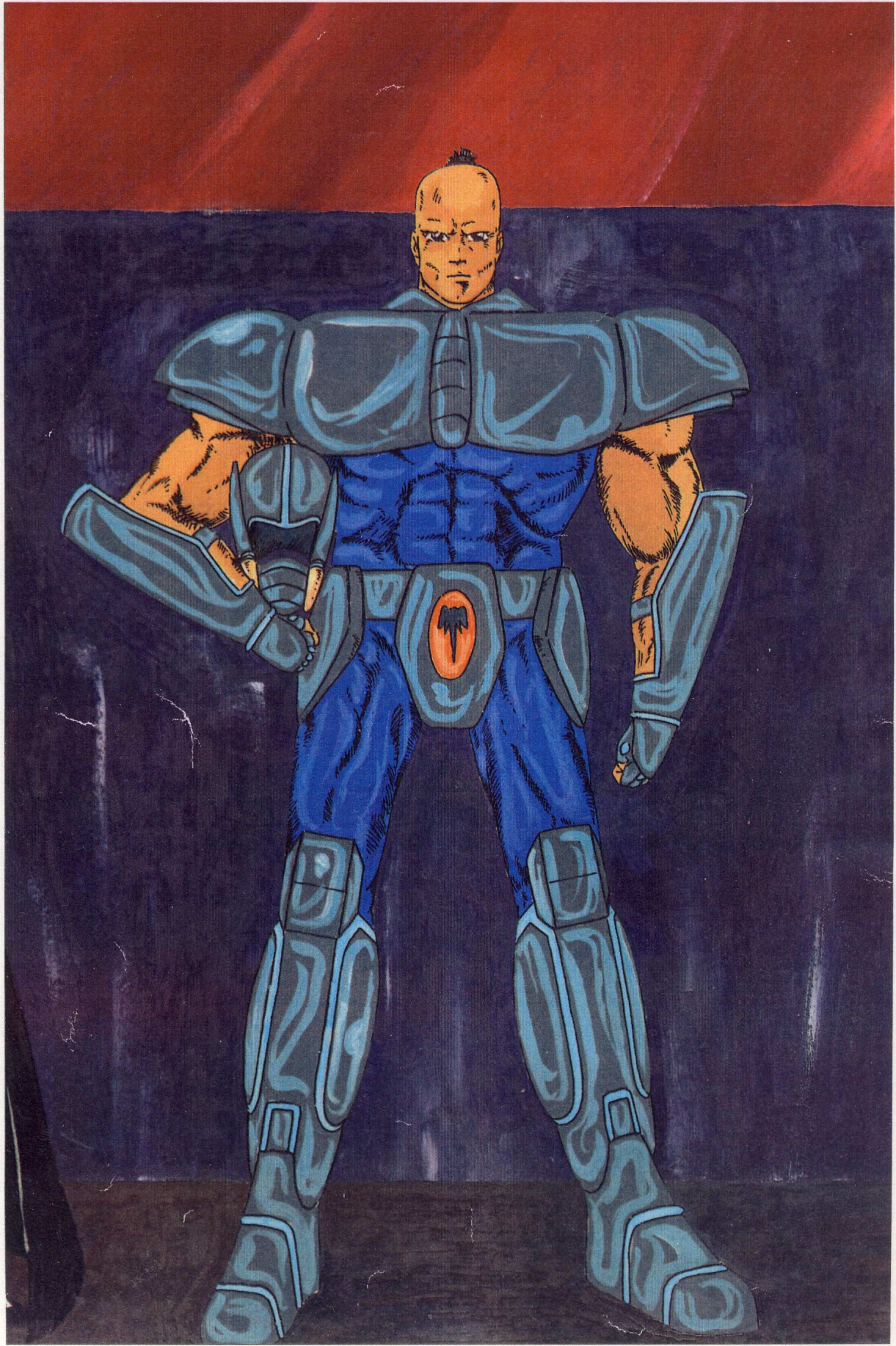


Shiba



NEO
SAINT SEIYA
LES CHEVALIERS DU ZODIAQUE

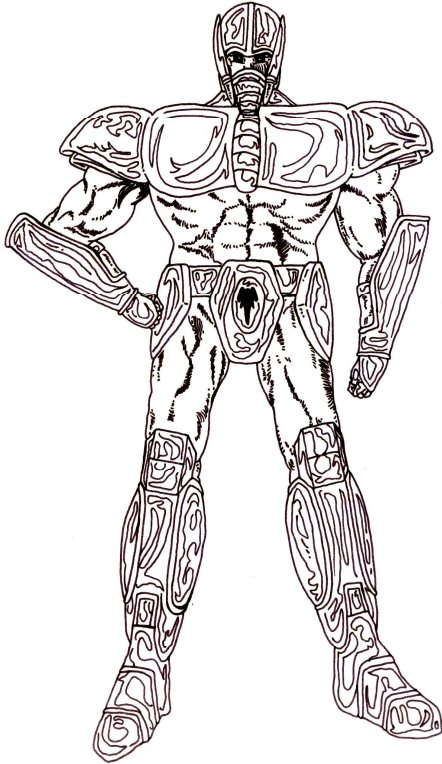
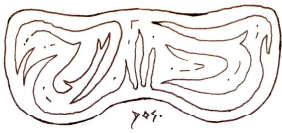
Néo Saint Seiya © M. Kurumada / C. Addams 2002



Huruko Waisoka

Chevalier de l'éléphant

(ex-PJ de Laurent Gonel)

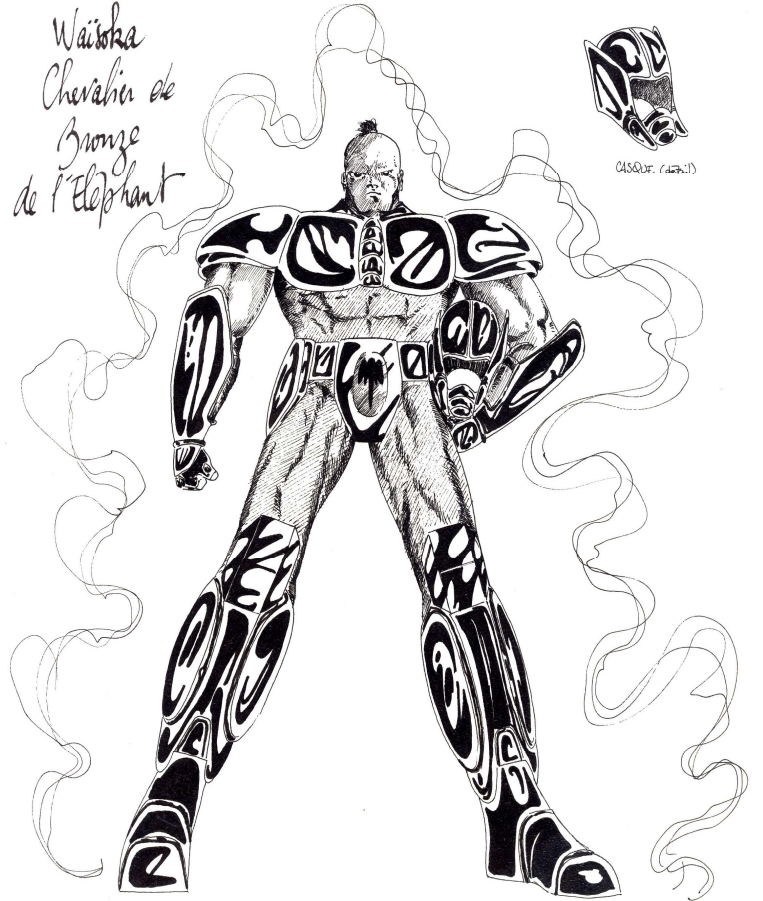


HERO.

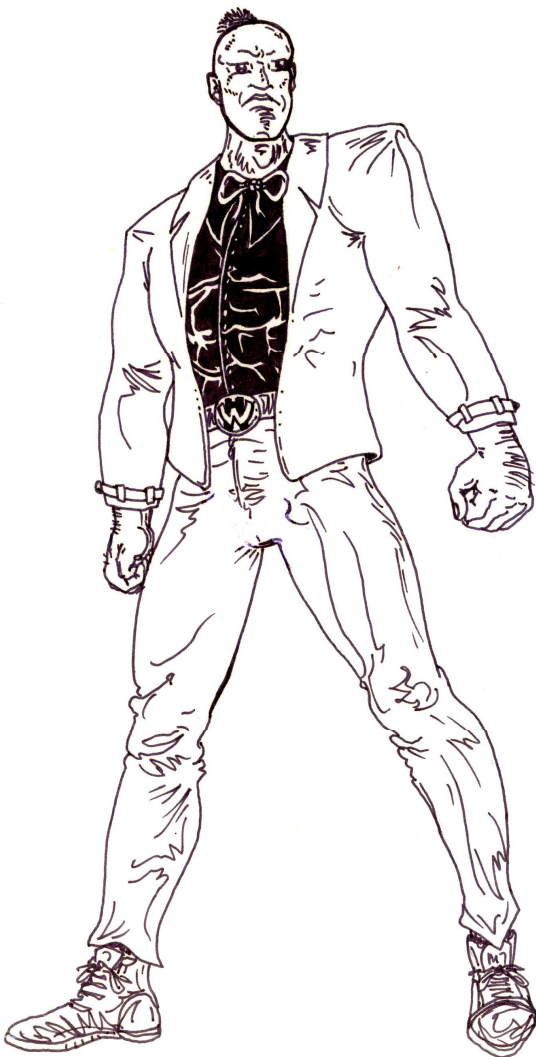
Huruko
Waisoka
Chevalier de
Bronze
de l'Elephant



CASQUE (HERO)



n. crevillat

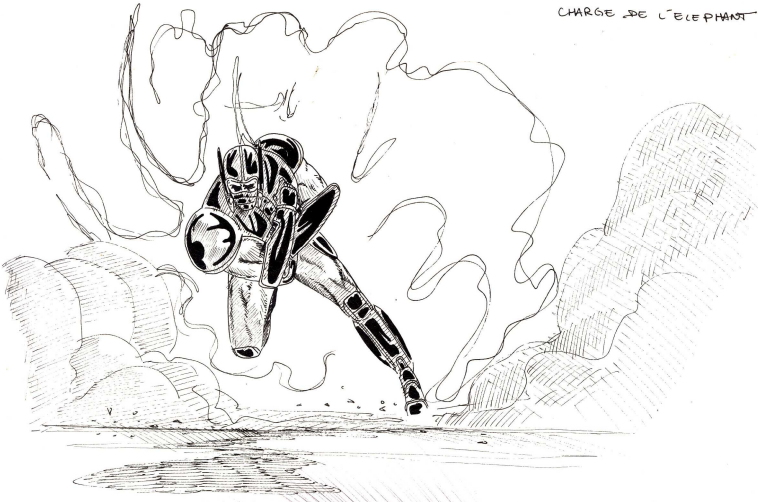


-HURUKO WAISOKA-

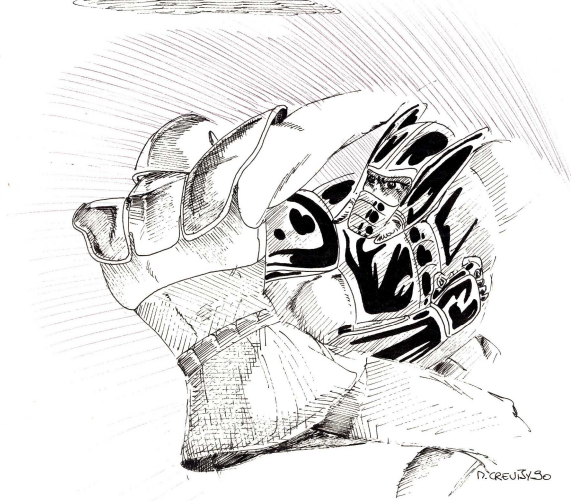
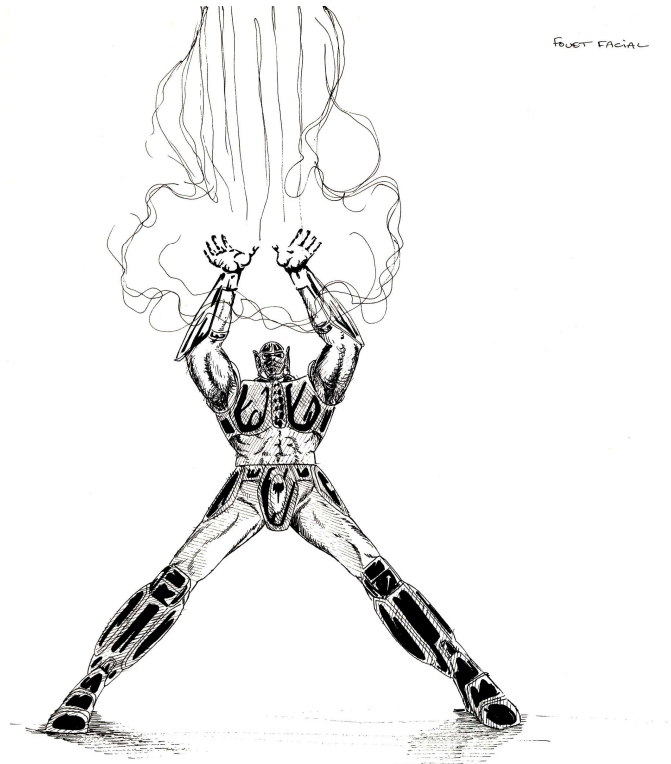


-CHEVALIER-

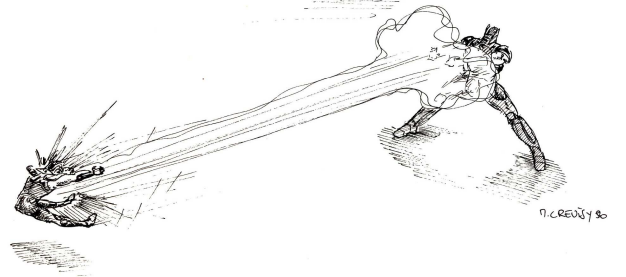
CHARGE DE L'ÉLÉPHANT



FOUST FACIAL

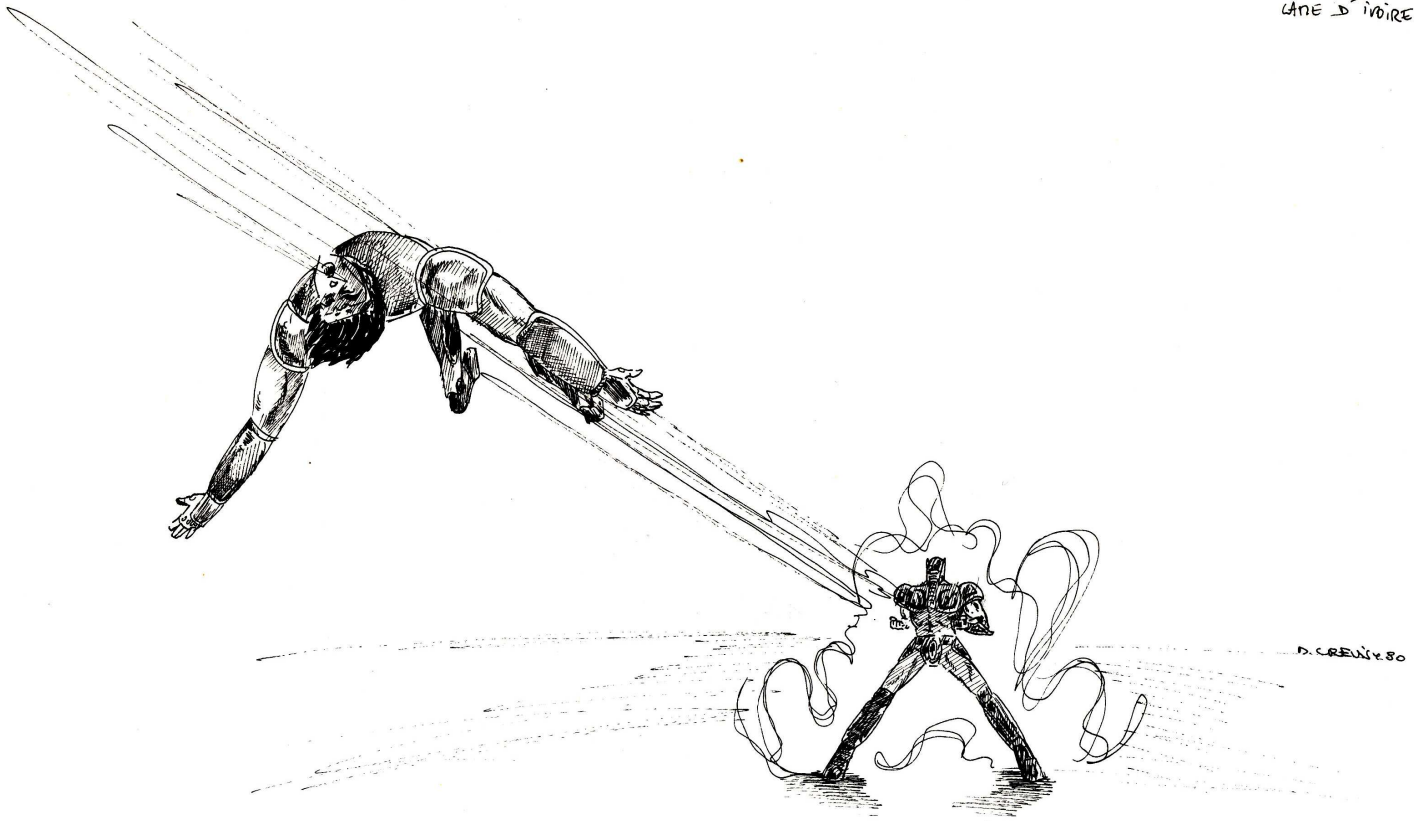


D. CREVIER 80



D. CREVIER 80

LANE D'IVOIRE

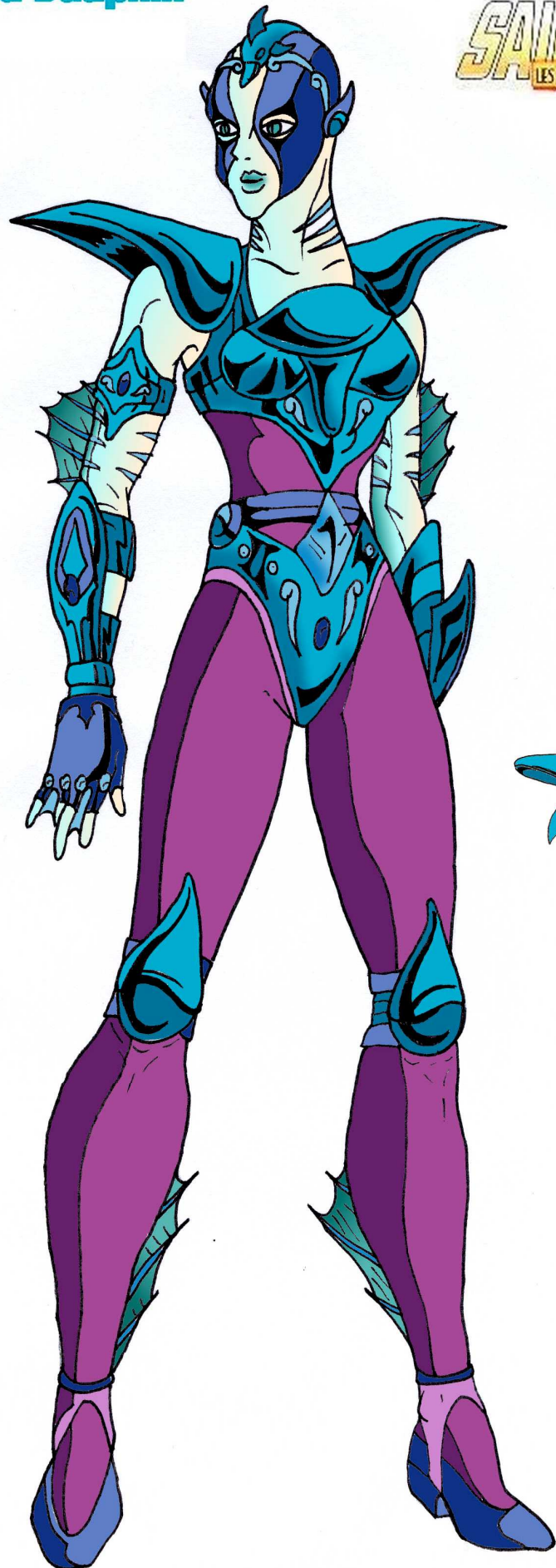


D. CREVIER 80

Les techniques spéciales de combat d'Huruko Waisoka

Bronze Saint du Dauphin

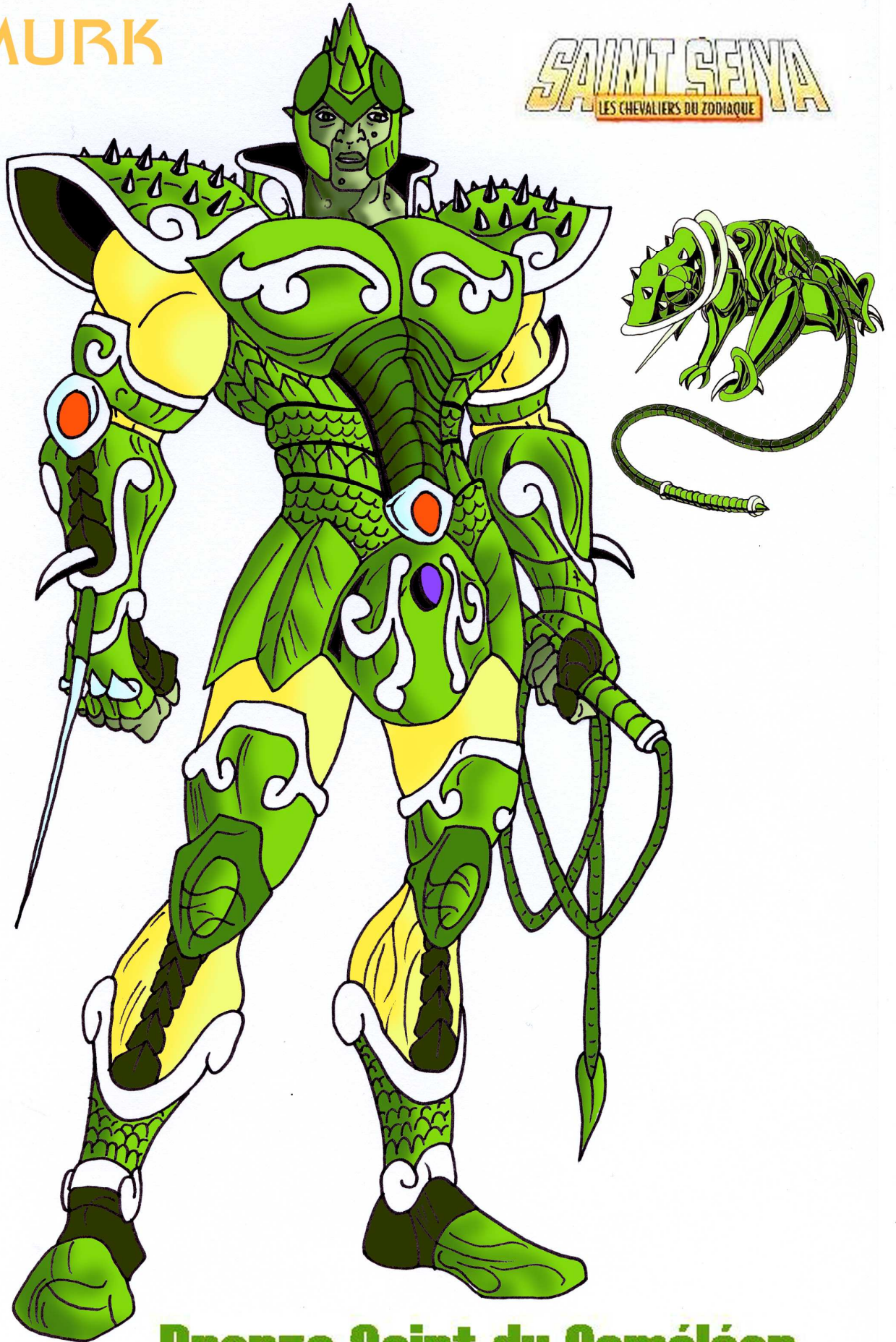
SAINT SEIYA
LES CHEVALIERS DU ZODIAQUE



CORINA

GMURK

SAINT SEIYA
LES CHEVALIERS DU ZODIAQUE



Bronze Saint du Caméléon