

Fiche Planète TERRE (Compagnies des Glaces)

<u>Situation :</u>	Univers 1, Galaxie Homoprincipale (voie lactée). Zone 6, Confédération Splaf. Quadrant (A6 - 9 – K).	<u>Système solaire :</u>	Système à étoile simple, en séquence principale (classe 2).	<u>Type d'étoile :</u>	G (jaune), assez brillante, classe 5. Nommée « Soleil » par les habitants.
<u>Orbite :</u>	1 UA. (en unités astronomiques, sachant qu' 1 UA = 149 597 870 km).	<u>Type :</u>	Type terrestre.	<u>Pression :</u>	1 (normale).
<u>Atmosphère :</u>	Oxygène – azote. Respirable.	<u>Océans :</u>	70% mais gelés.	<u>Diamètre :</u>	12 000 km.
<u>Densité :</u>	5,5. moyennement ferreux.	<u>Gravité :</u>	1 G.	<u>Inclinaison sur l'axe orbital :</u>	23°.
<u>Effets saisonniers :</u>	Normaux car axe inchangé mais atténués par « bouclier solaire ».	<u>Longueur de jour :</u>	24 H.	<u>Composition du sol :</u>	Plus de roche que de métal.
<u>Climat :</u>	Glacé.	<u>Températures :</u>	Basses –60°, moyennes –30°, Hautes -10°.	<u>Relief principal :</u>	Plaine glacée type polaire.
<u>Relief secondaire :</u>	Banquise plate.	<u>Longueur de l'année :</u>	365 J.	<u>Lune(s) :</u>	1 mais explosée en poussières réparties en orbite (« bouclier solaire »).

Tableau des ressources :

Ressources	Planète
Matières organiques	Rare
Matières radioactives	Rare
Métaux industriels	Ample sans surplus
Métaux légers	Ample sans surplus
Métaux lourds	Ample sans surplus
Minéraux spéciaux	Dépourvu
Cristaux précieux	Dépourvu
Biosphère	<p>Flore inexistante à part marine et en serres. Faune mutée pour survivre à la glaciation. 3 espèces intelligentes : l'homme du chaud, l'homme du froid (les roux), et les « hommes-jonas ». Il est à noter que l'atmosphère est saturée d'une arme biologique Gouluz : un accélérateur évolutif génétique à échelle planétaire.</p>

Reste du système solaire :

Etoile :

Type	Taille	Masse	Biozone	Limite	Rayon	Orbites	Modif vie
G	5	1*sol	0,8/1,2	0,0	0,0	8	0

Orbites :

Orbite 1 : 0,39 UA planète **Mercure** de type boule de roche.

Orbite 2 : 0,73 UA planète **Vénus** de type boule de roche.

Orbite 3 : 1 UA planète **TERRE** de type « terrestre », évidemment ! ☺

Orbite 4 : 1,52 UA planète **Mars** de type boule de roche + 2 lunes.

Orbite 5 : 5,2 UA planète **Jupiter** de type géante gazeuse, avec anneaux et 16 lunes.

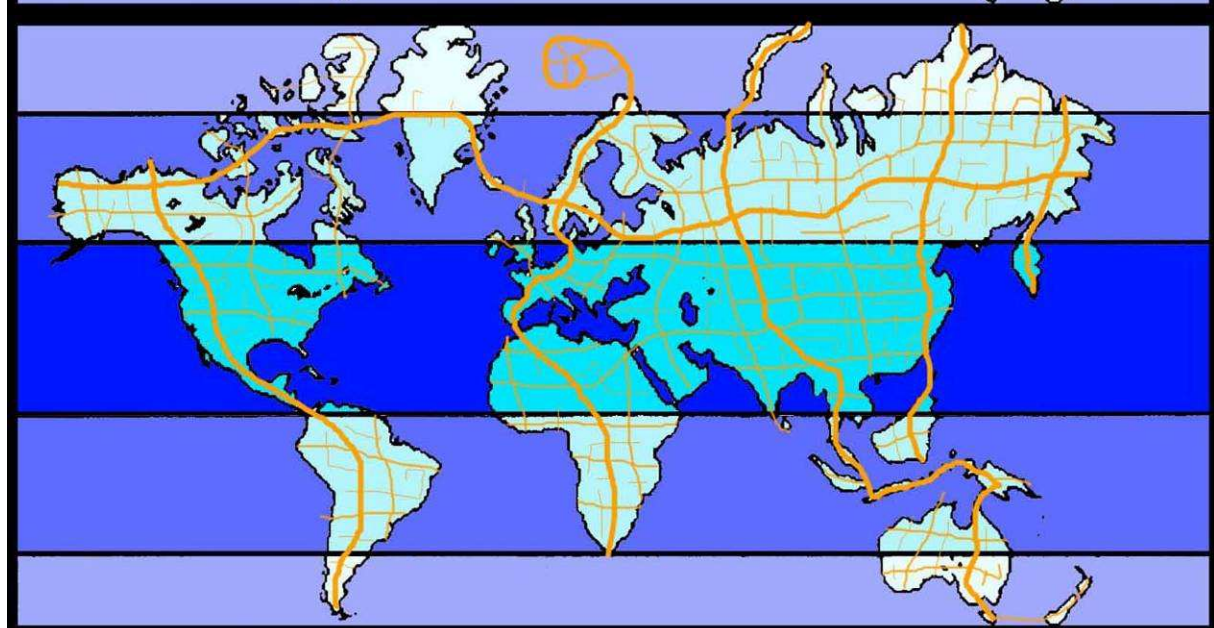
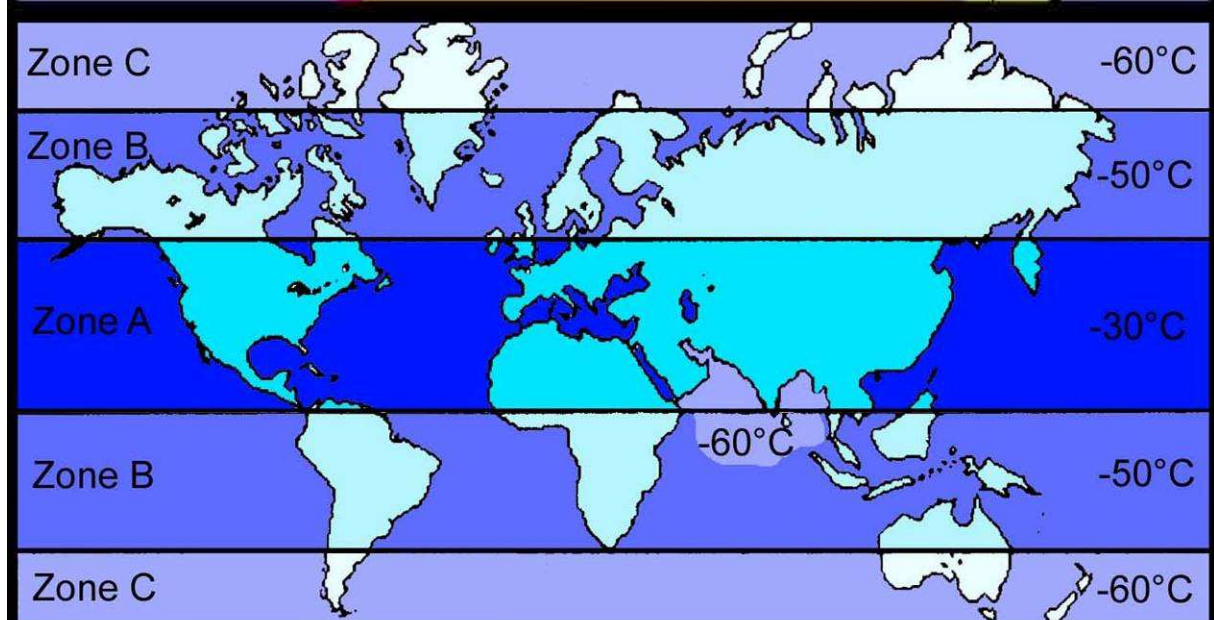
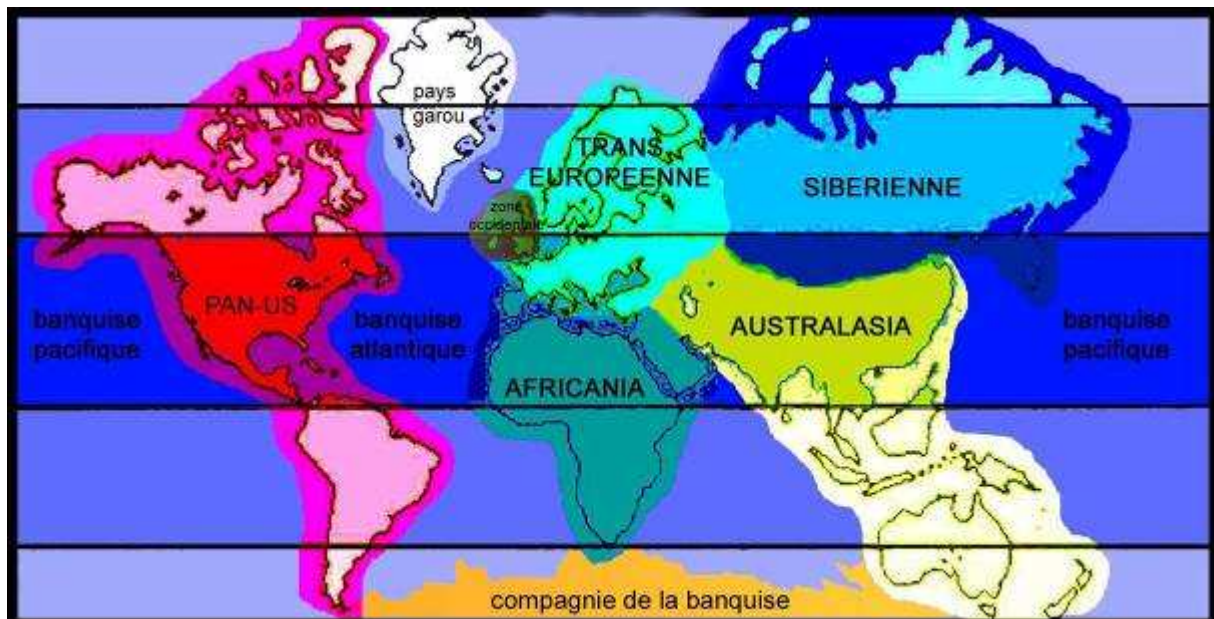
Orbite 6 : 9,5 UA planète **Saturne** de type géante gazeuse, avec anneaux et 18 lunes.

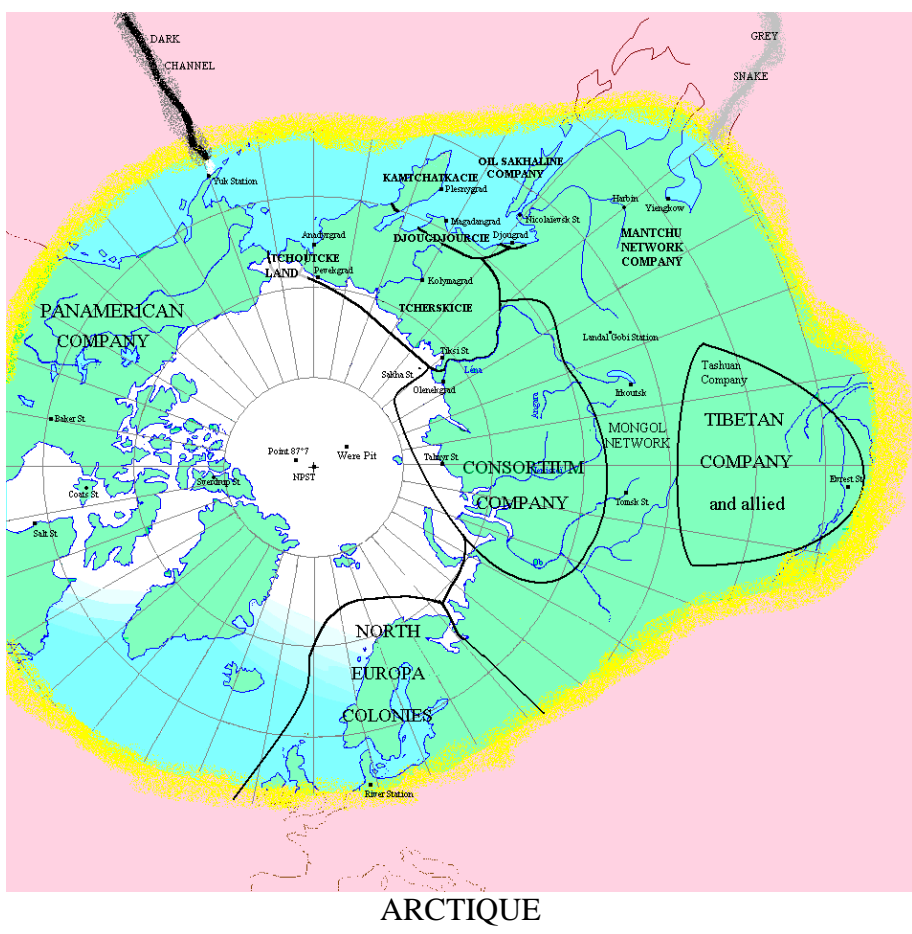
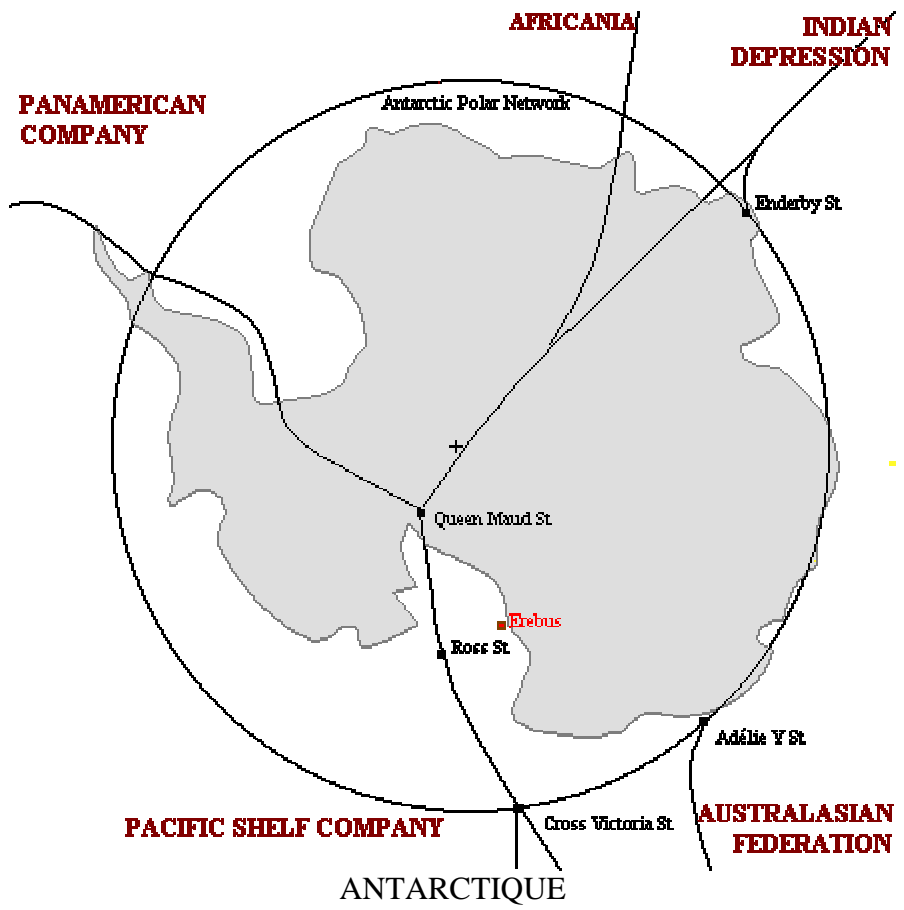
Orbite 7 : 19,2 UA planète **Uranus** de type géante gazeuse, avec 21 lunes.

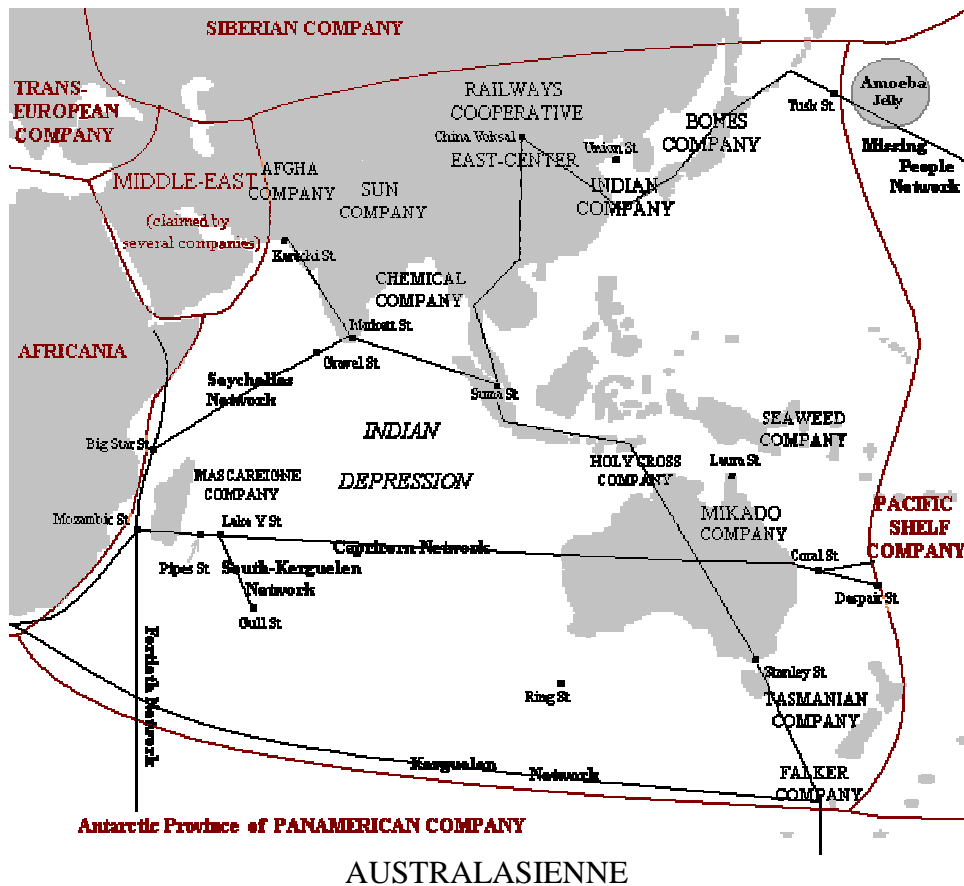
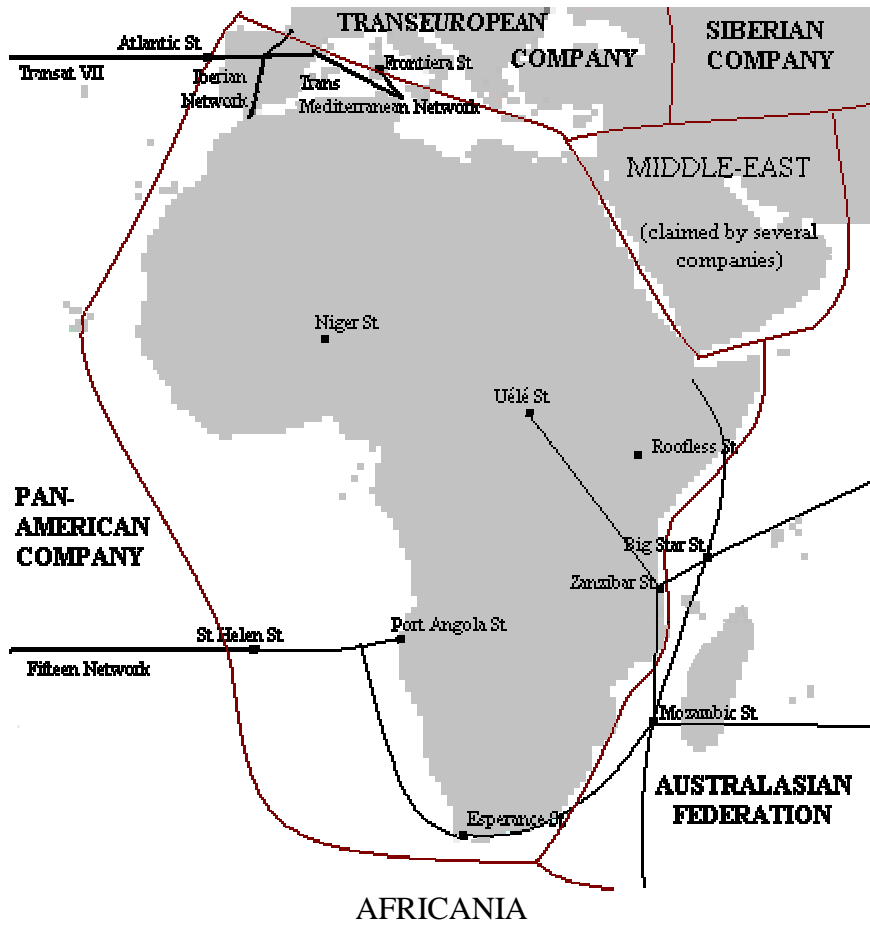
Orbite 8 : 30,07 UA planète **Neptune** de type géante gazeuse, avec 13 lunes.

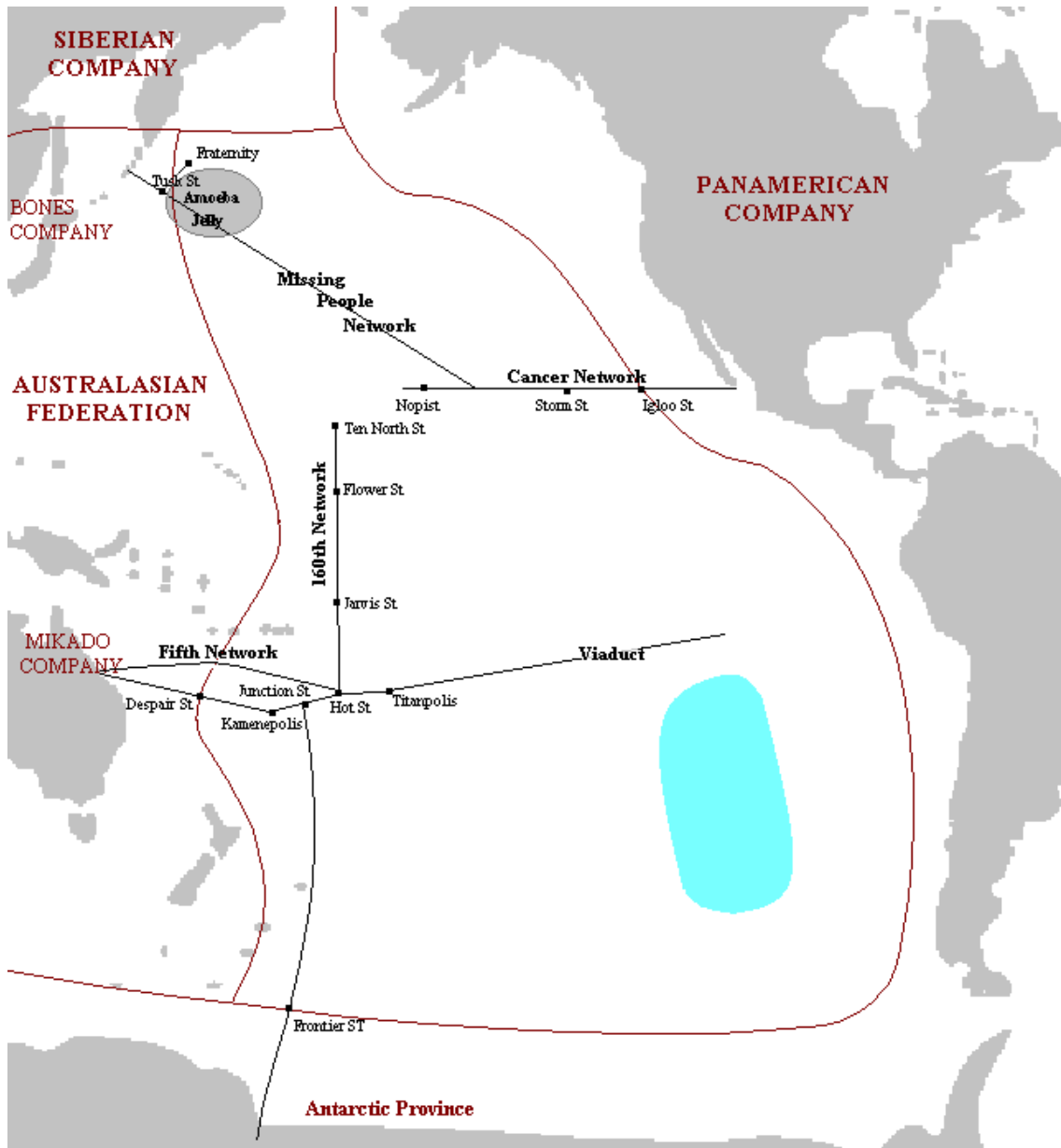
Pluton est désormais considérée comme une « planète naine » qui ne fait plus partie de la liste des planètes du système solaire.

Il y a une quantité d'autres corps en orbites, mais leurs petites tailles en fait une quantité négligeable à l'échelle de l'A.G..

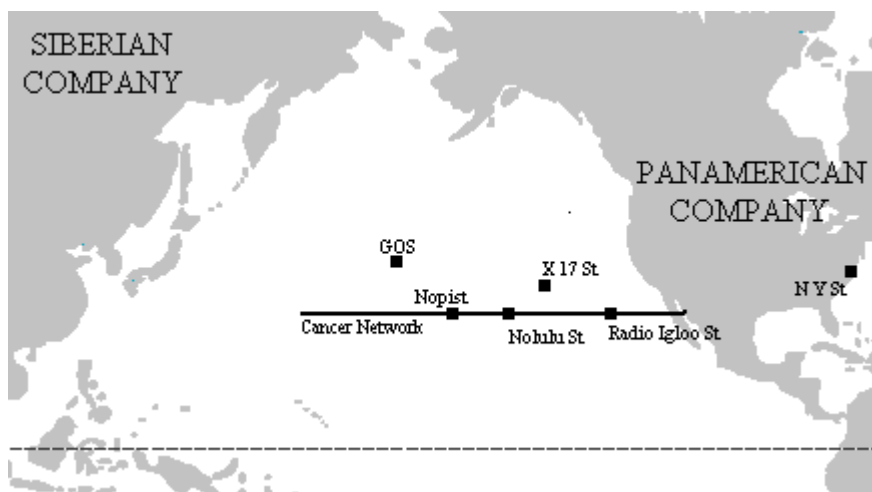




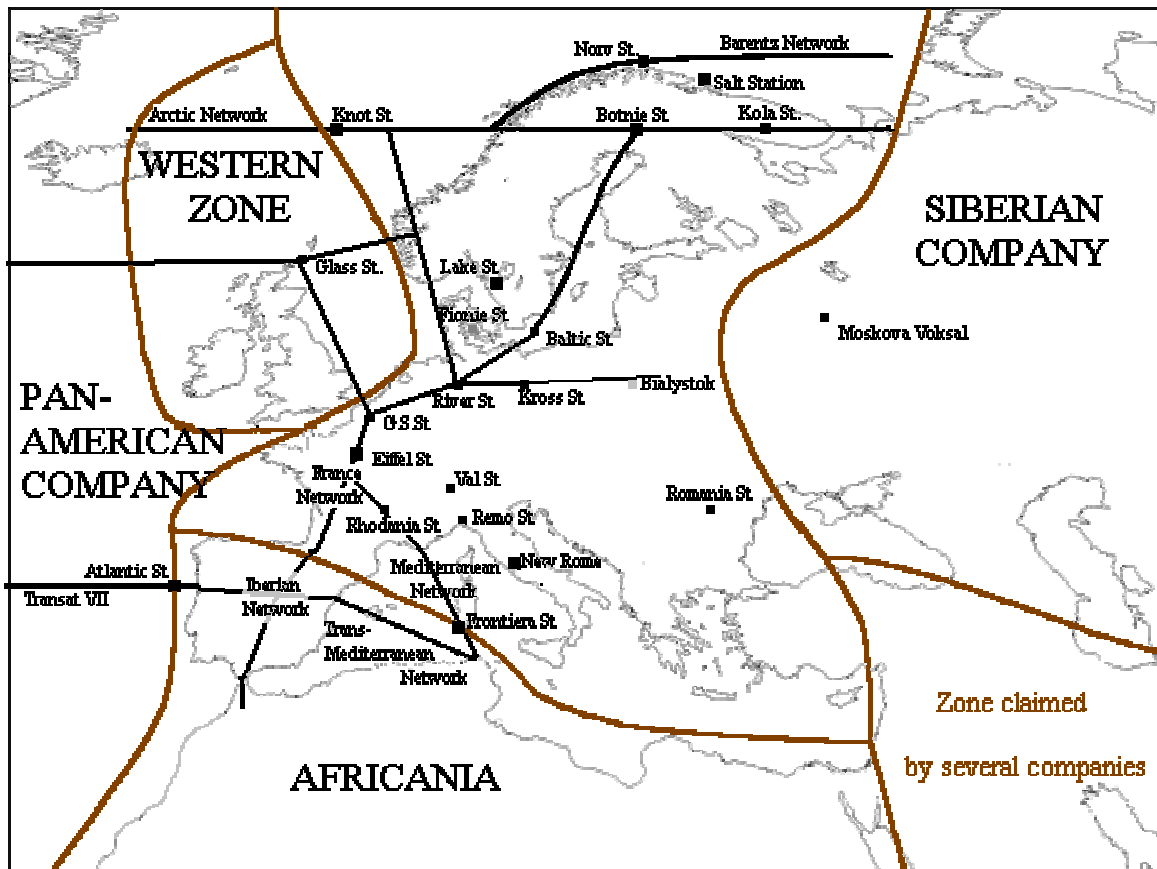
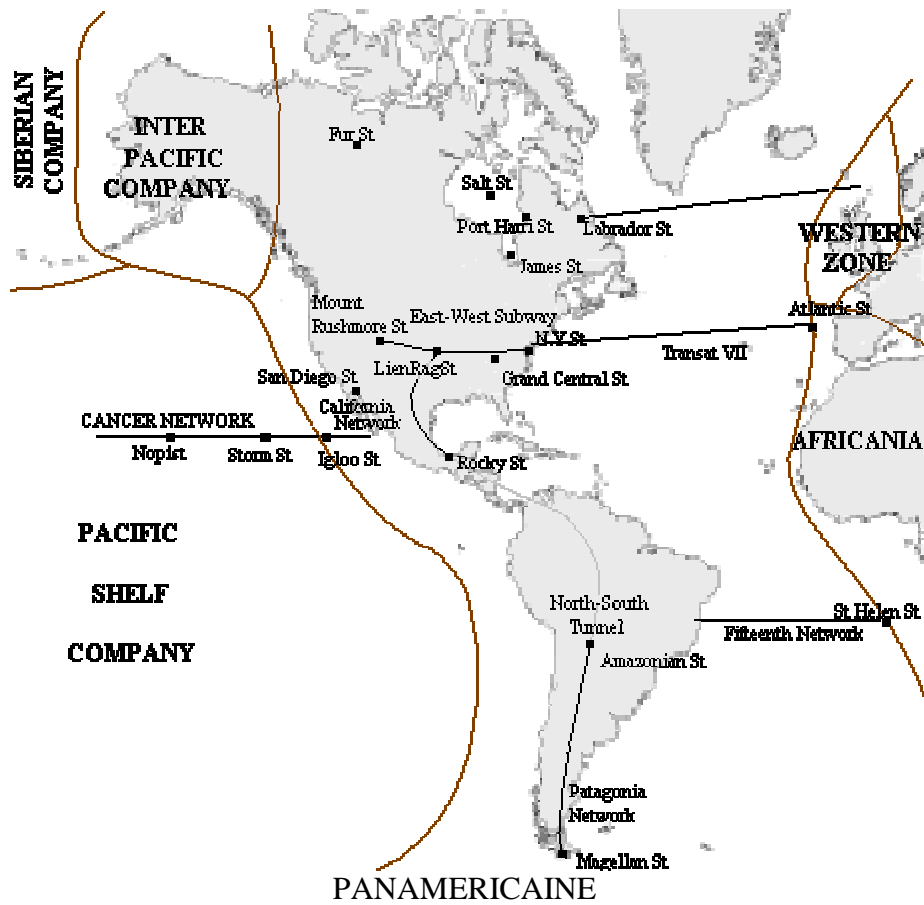




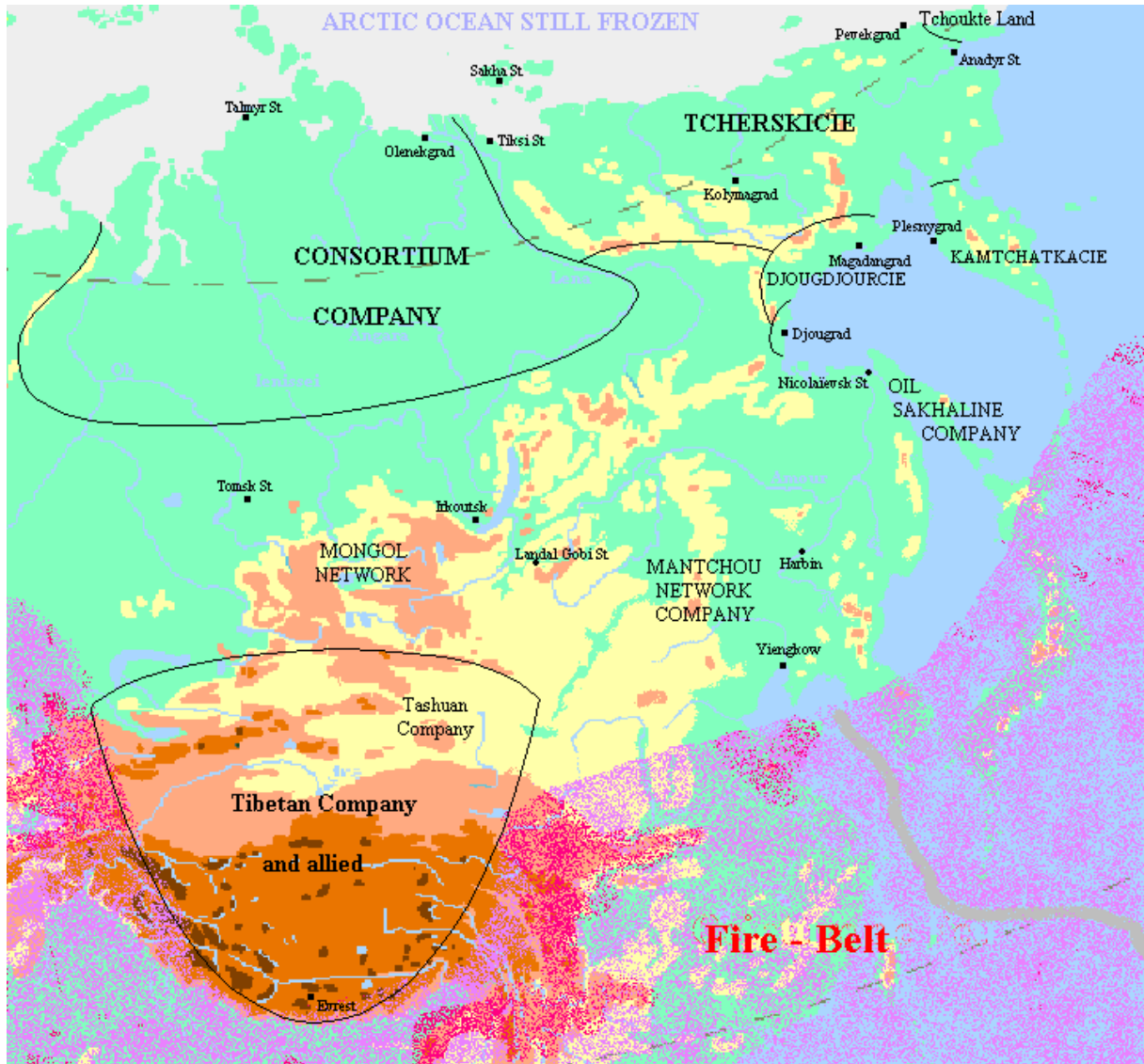
COMPAGNIE DE LA BANQUISE



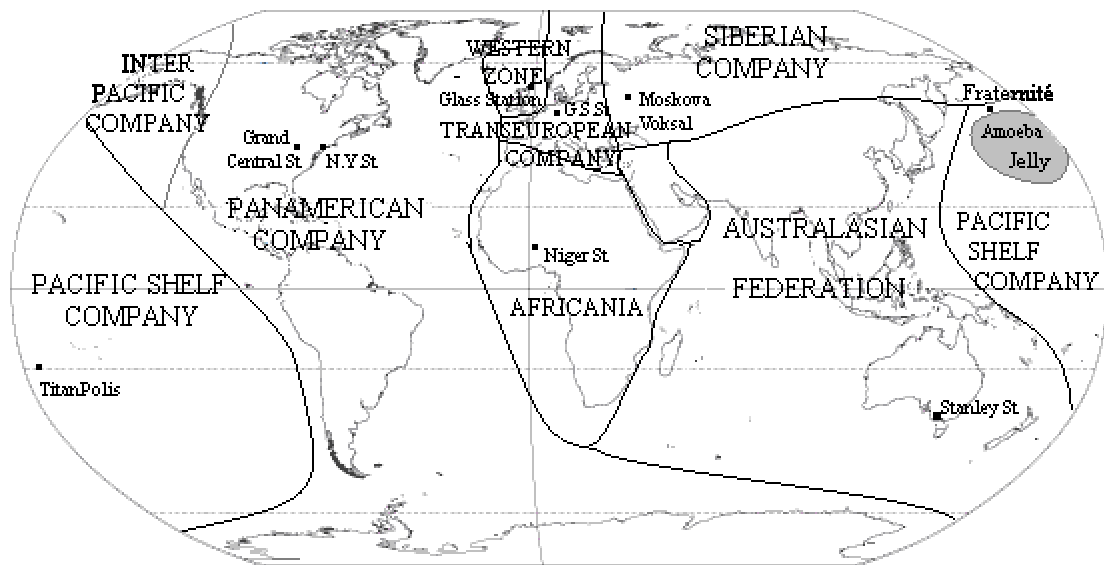
PACIFIQUE (jonas)



TRANSEUROPEENNE



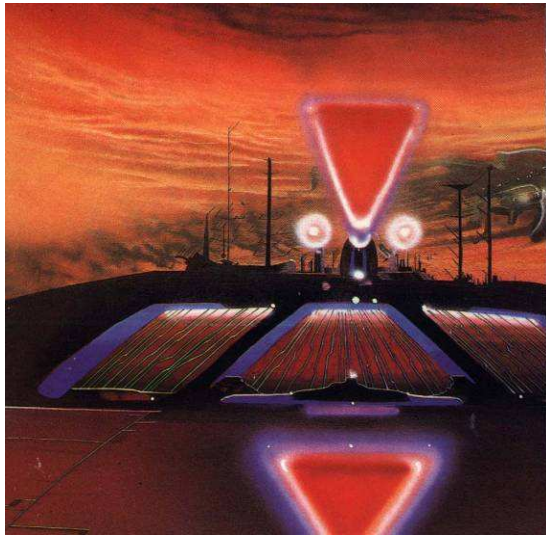
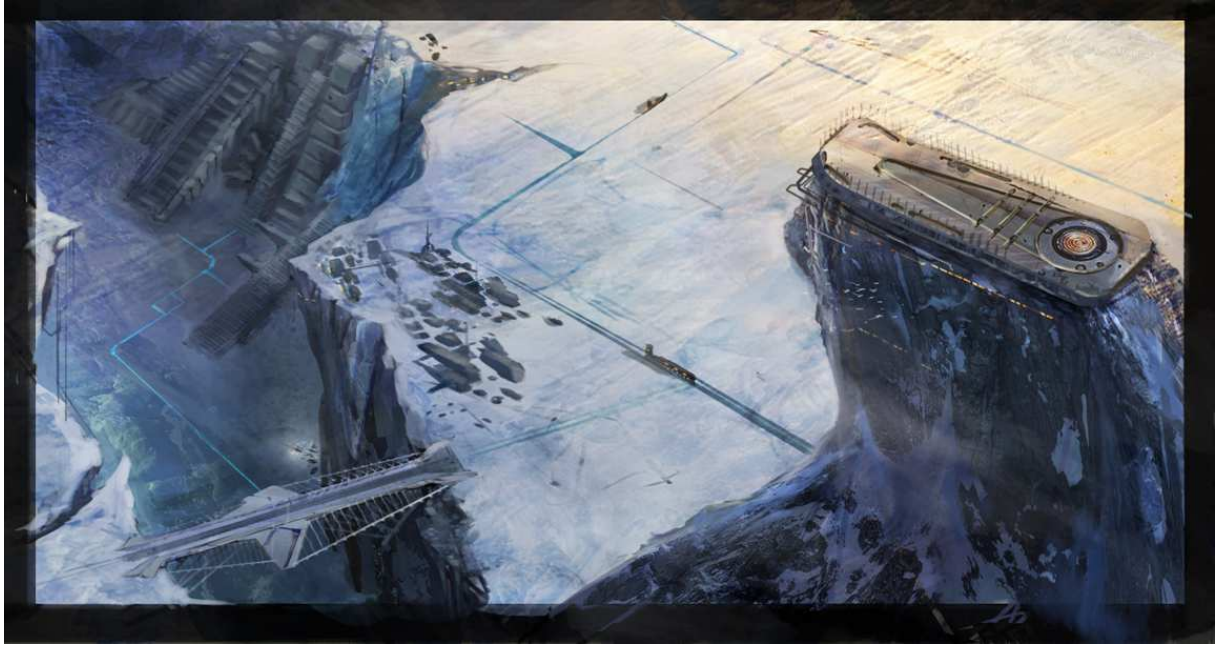
SIBERIENNE



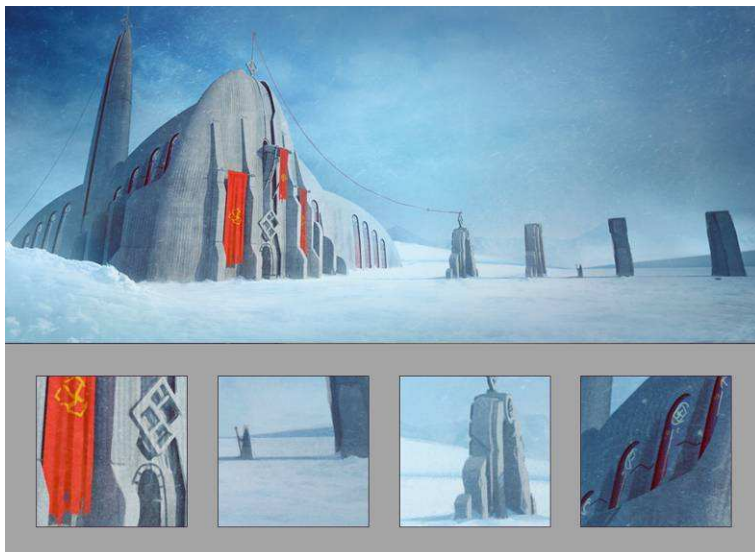
LE MONDE EN 2368

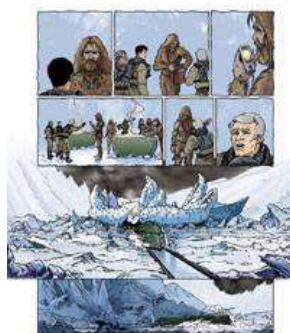


UNE STATION



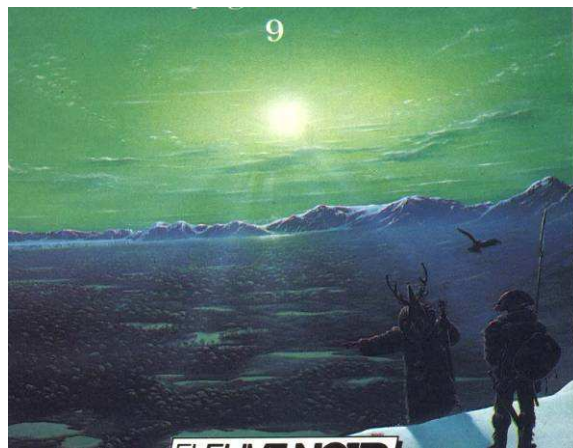
"DAY AFTER TOMORROW" ROBERT M. KALAFUT

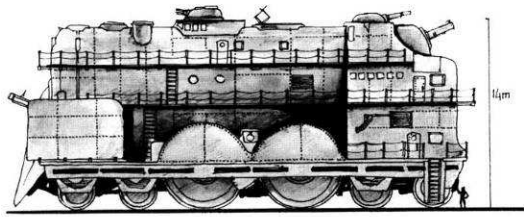




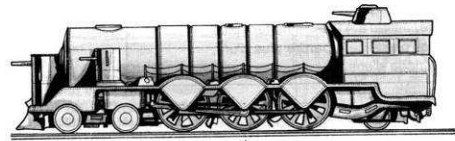
LIRE LES BD AUX EDITIONS DARGAUD



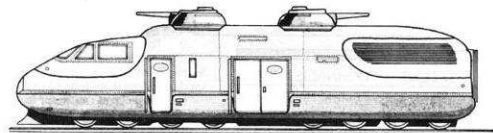
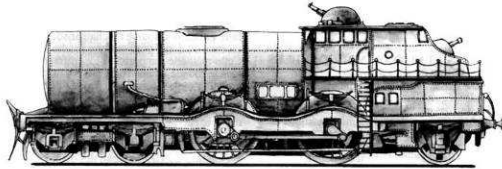




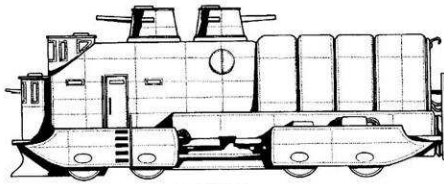
vaisseau combat 4 voies



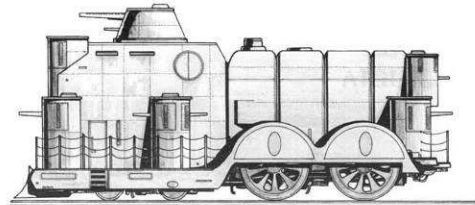
locomotive



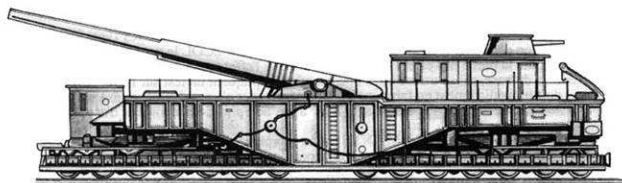
drasine transport de troupes



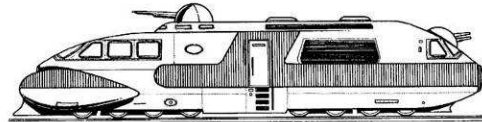
escorteur



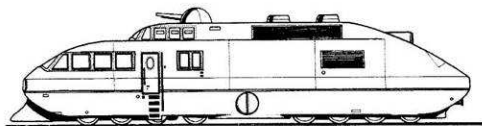
canonniere



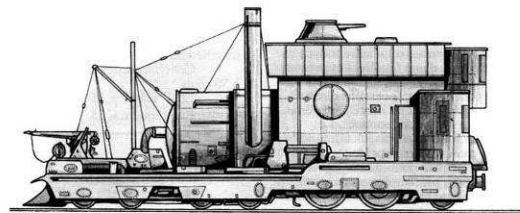
canonniere geante



aviso electrique



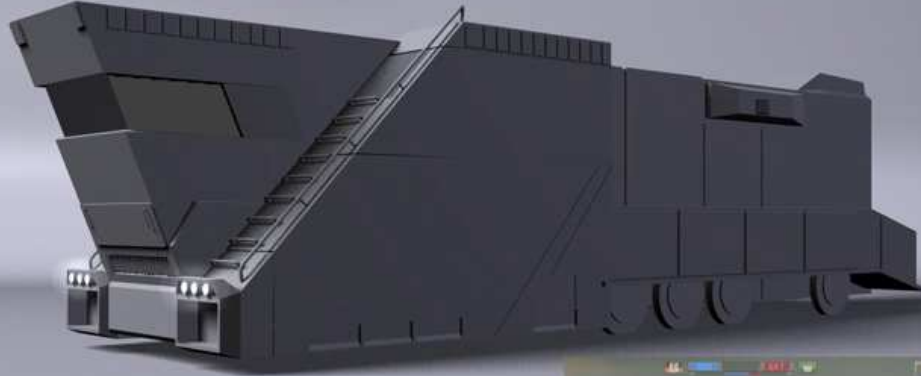
aviso nucleaire



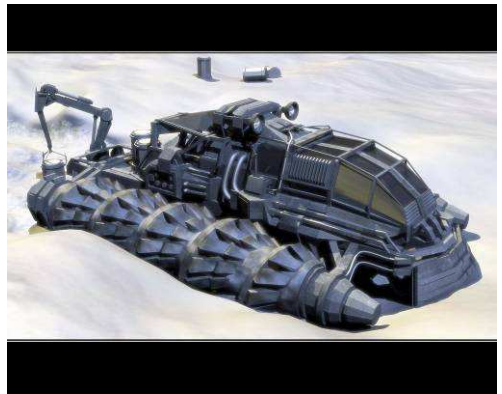
baleiniere

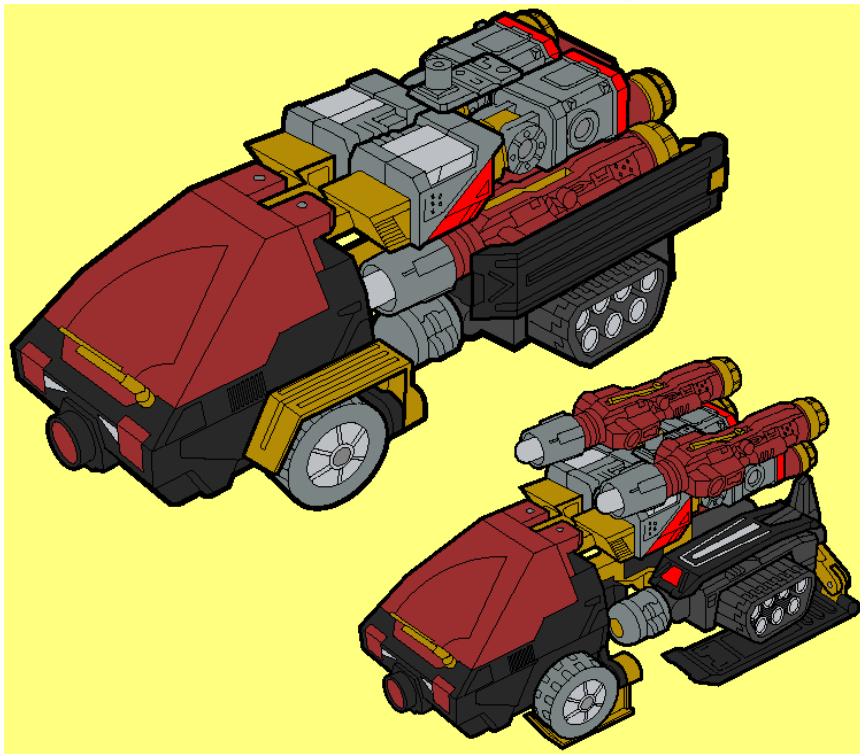
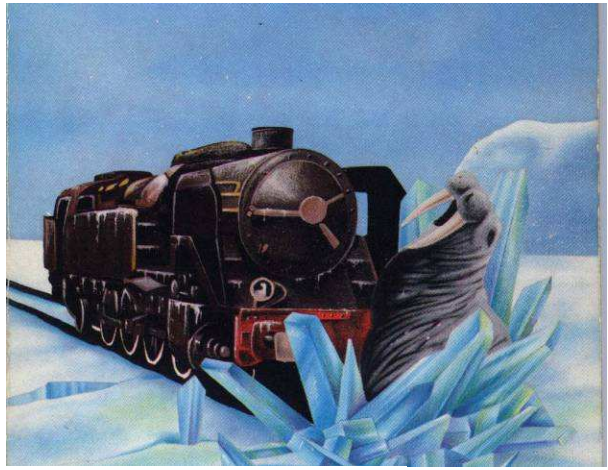
LOCOMOTIVES

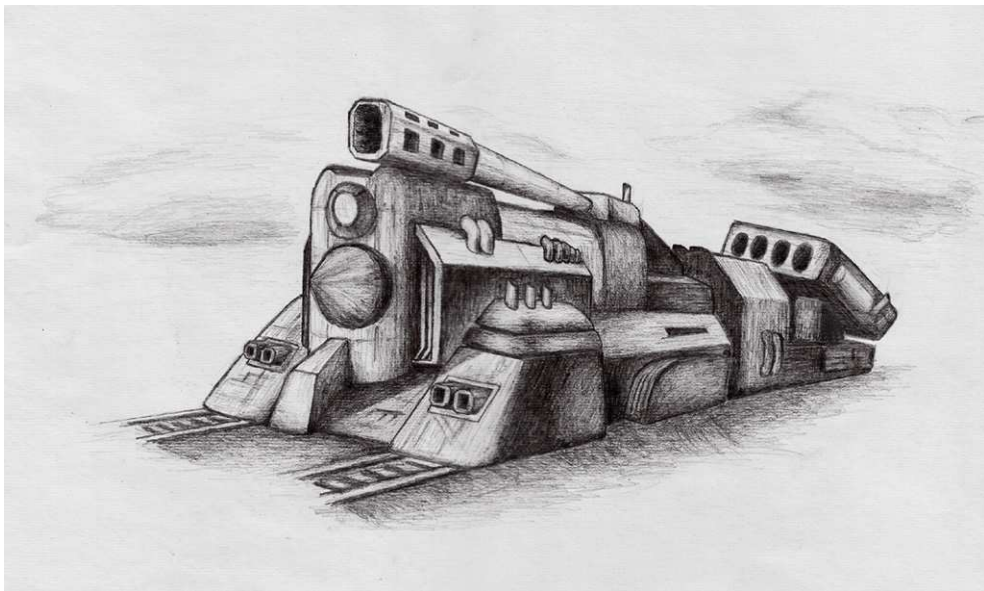
BATTLEFIELD 2142 TRAIN

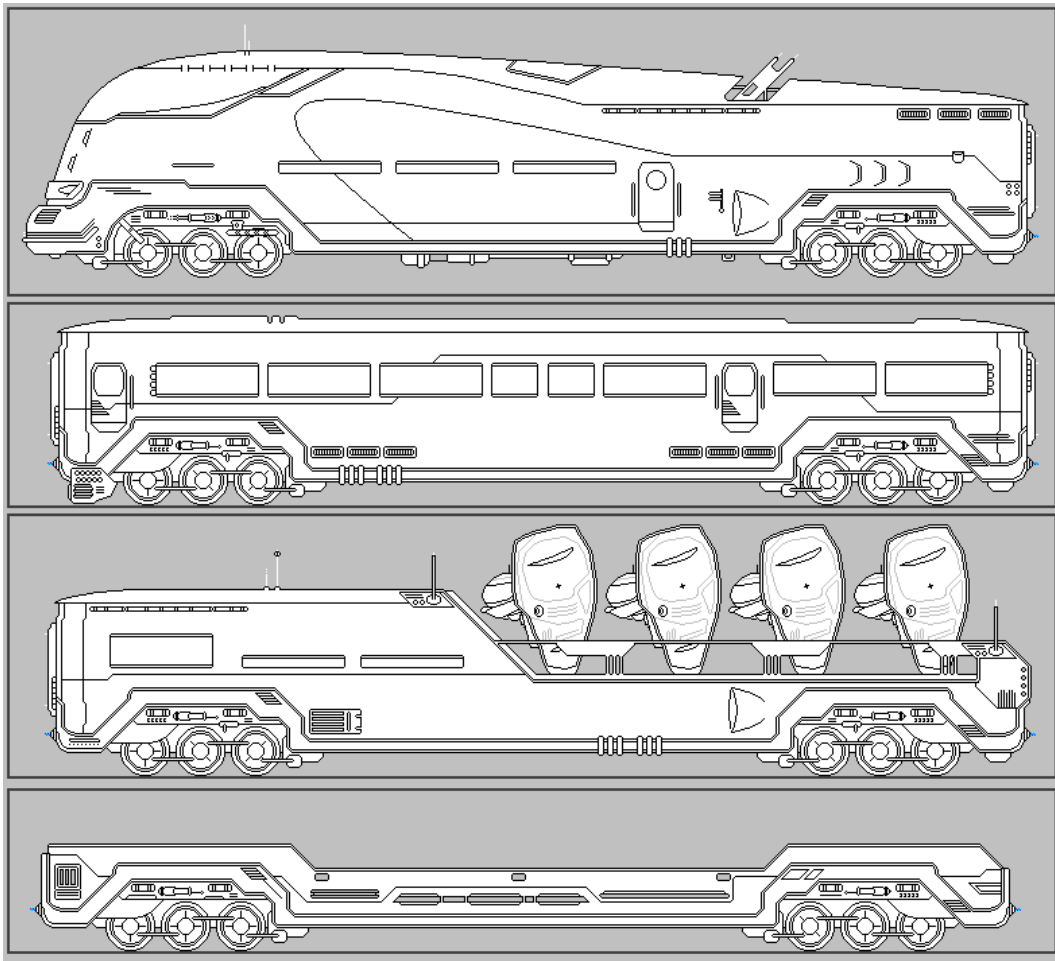


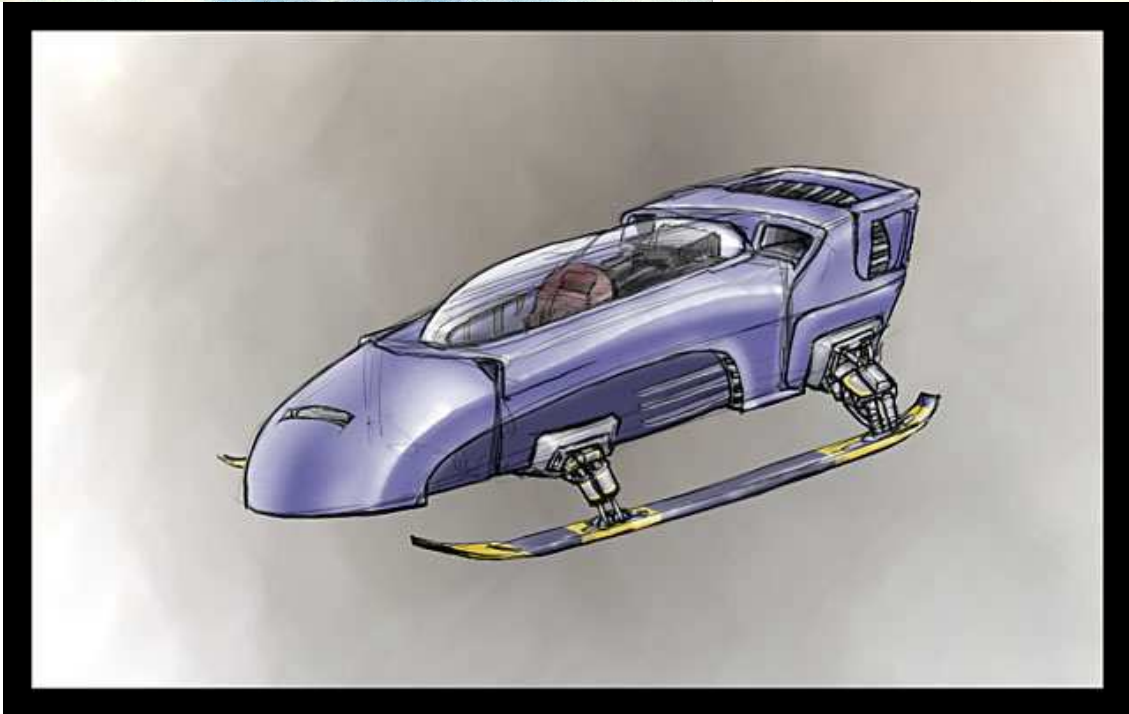
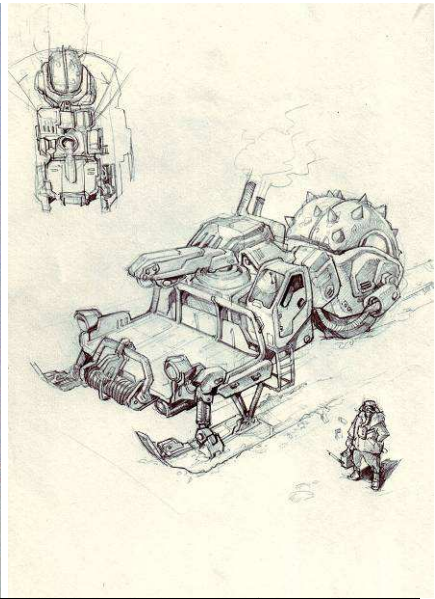
Design by: DICE
Modeling by: Cold Levian

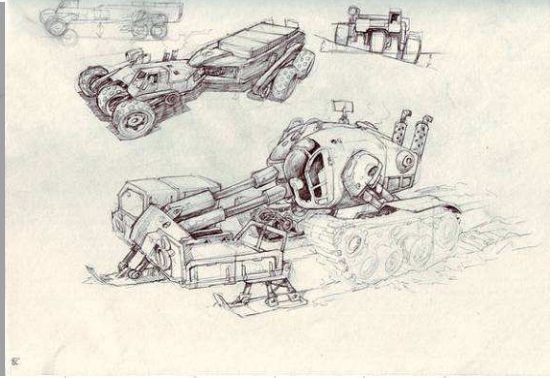
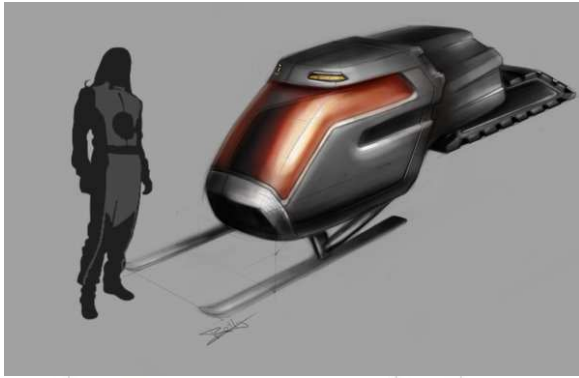




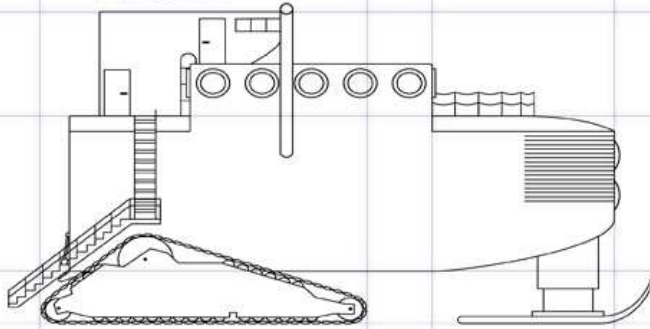




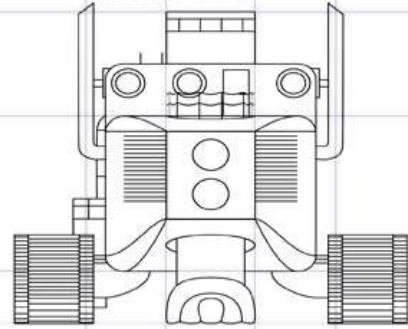




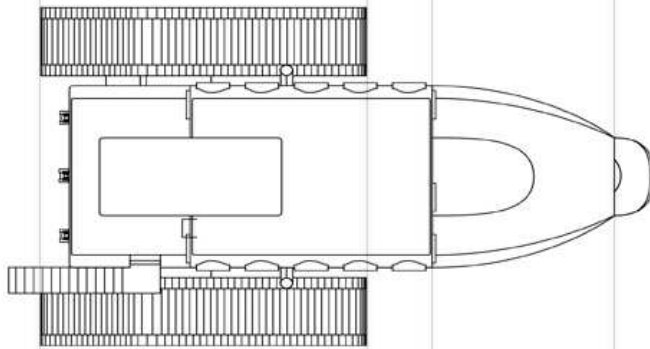
RIGHT



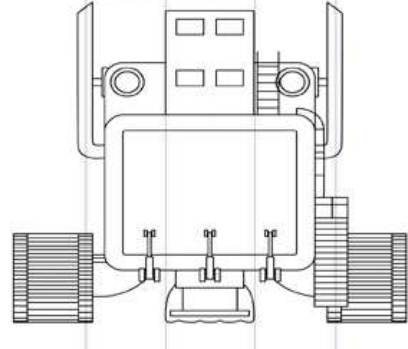
FRONT



TOP

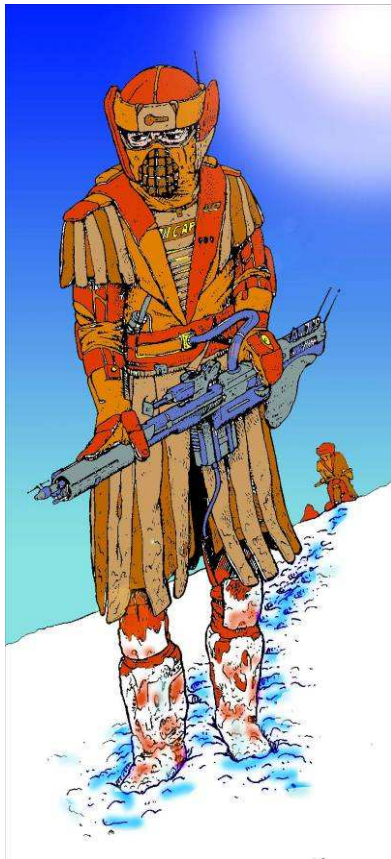


BACK



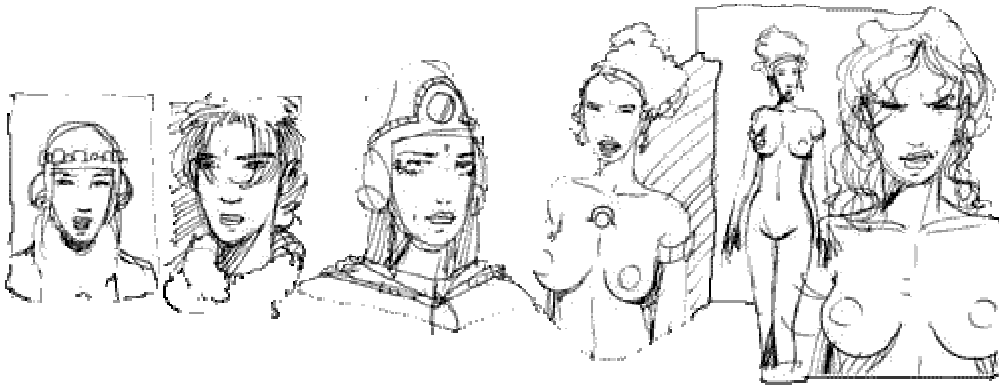
IDAES
JELLE VOET

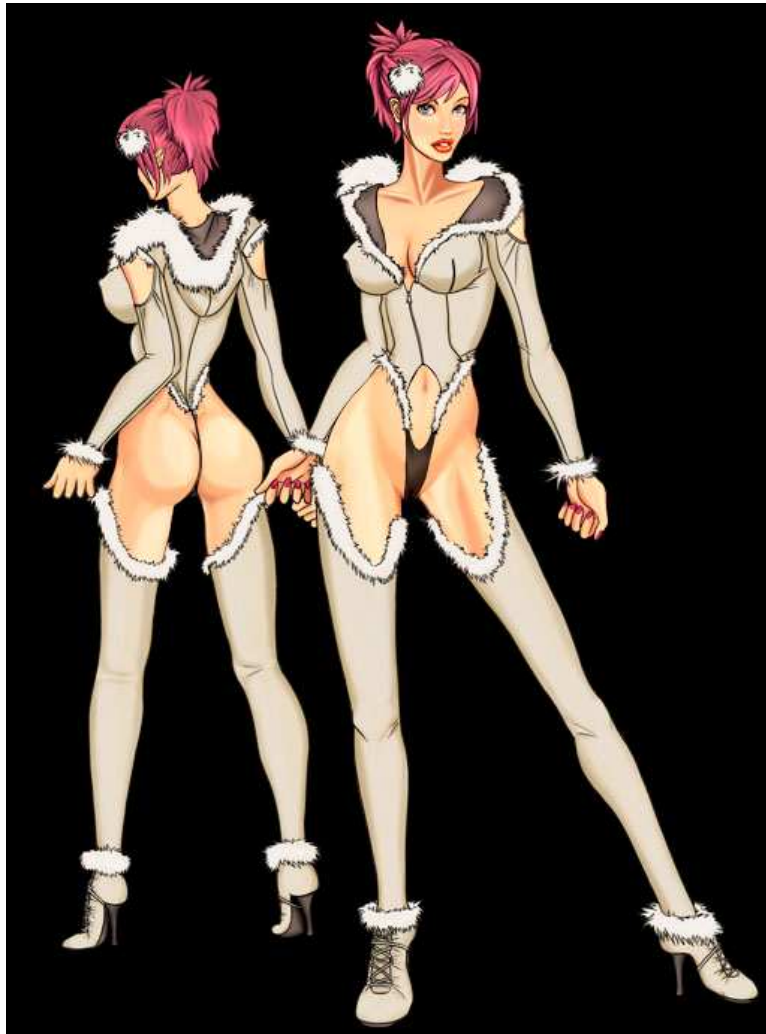




HOMMES DU CHAUD





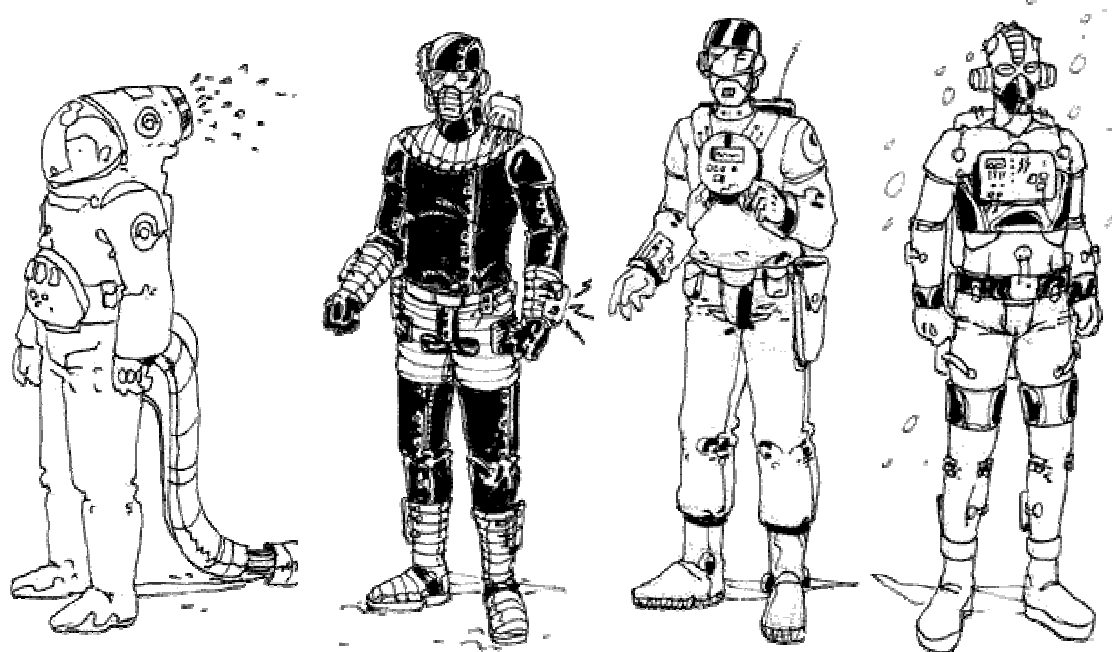
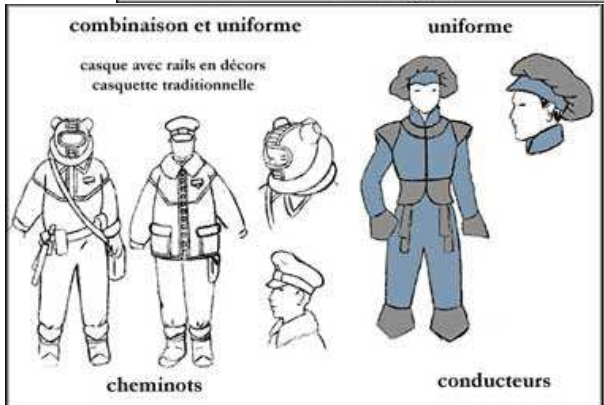
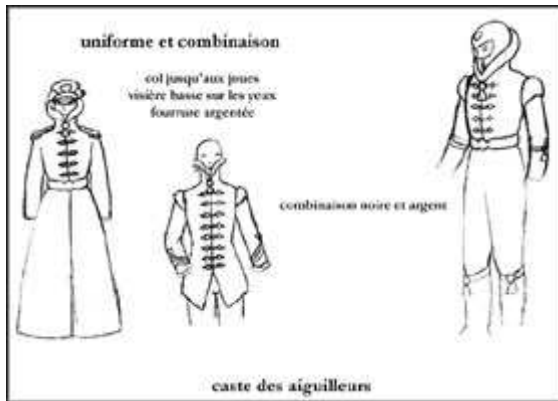




Biohazardous-Environment Combat Unit

Angus Tsang, 2005







Lien Ras

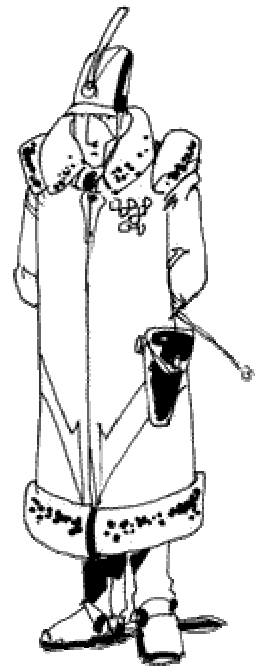
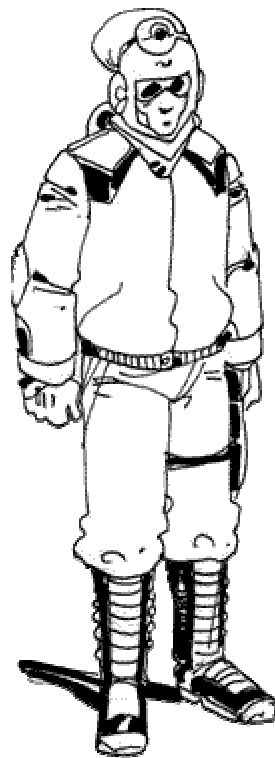
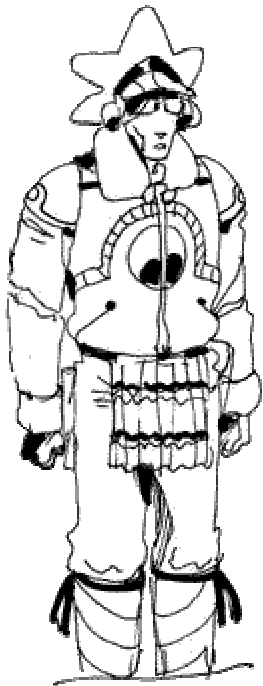


Floa

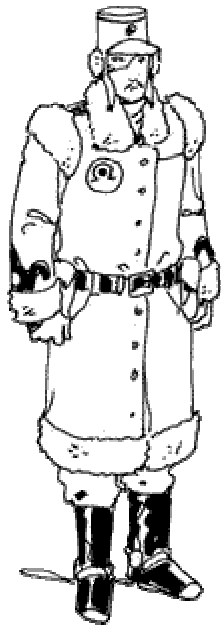


le Gnome

époque cabaret Nikky



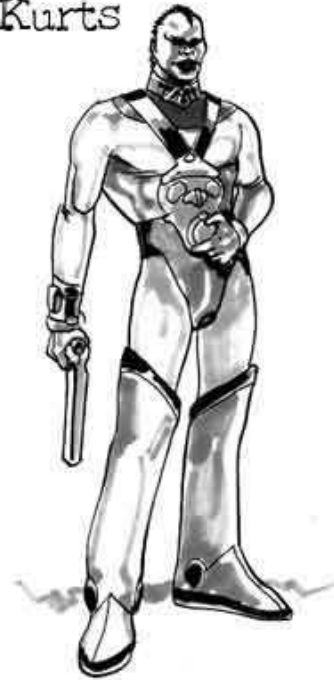
officier



sous-officier



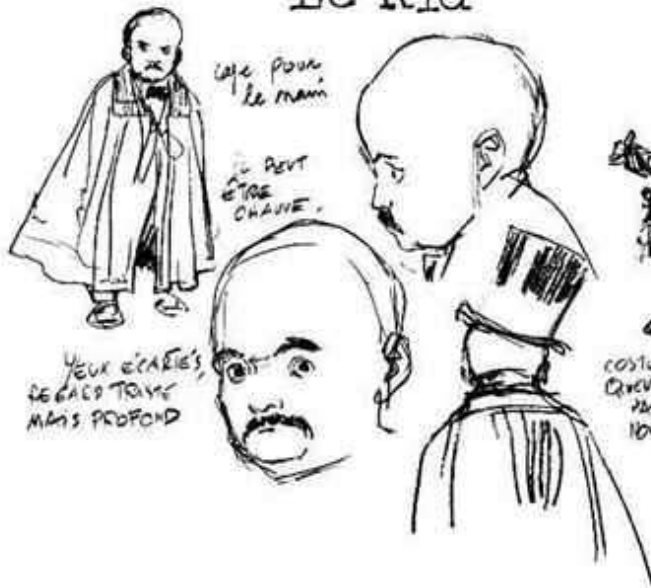
Kurts



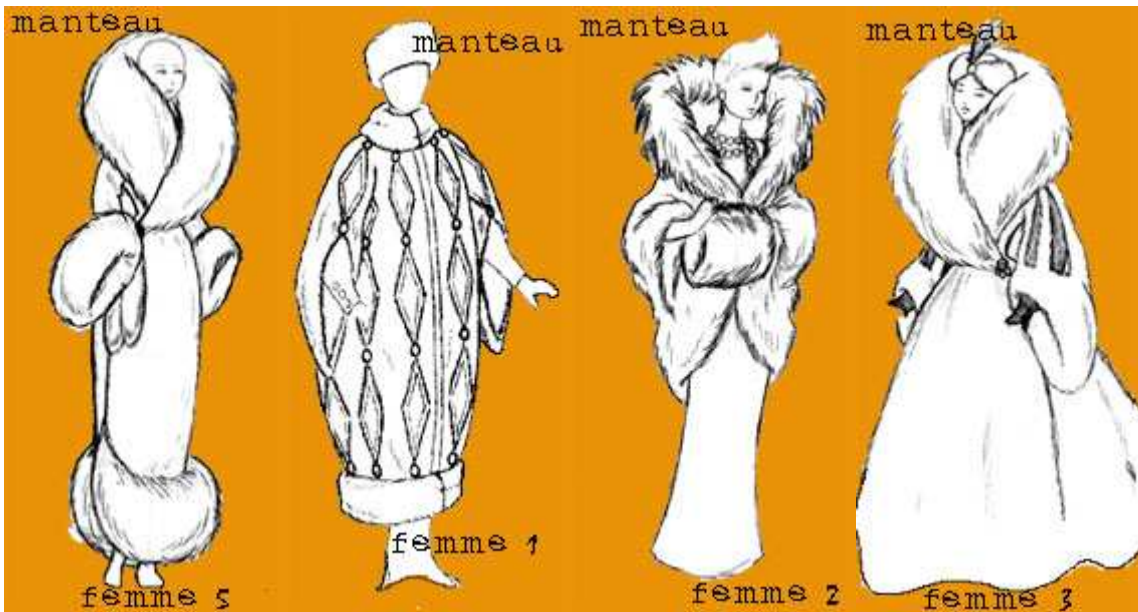
Lady Diana

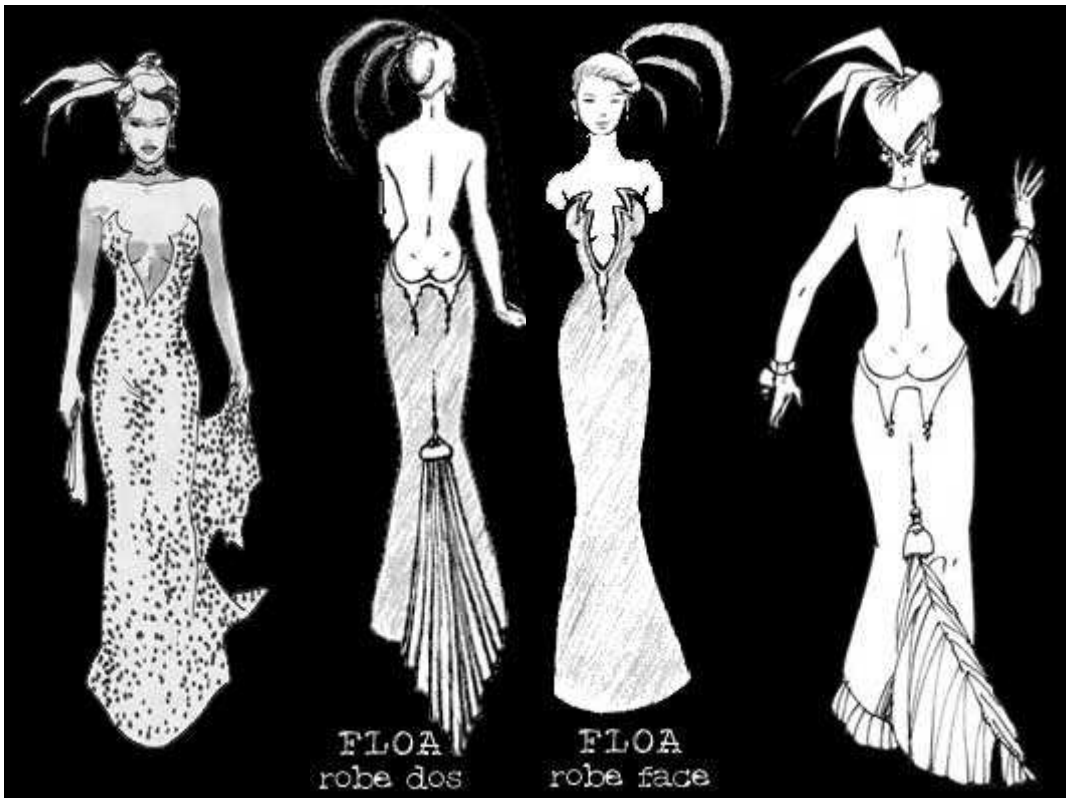


Le Kid



Lien Ra9





Yeuse

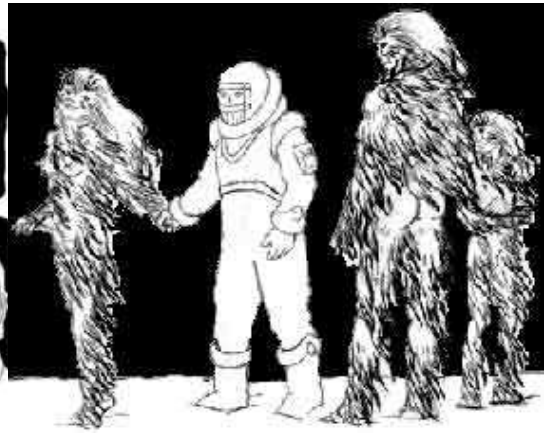


Yeuse

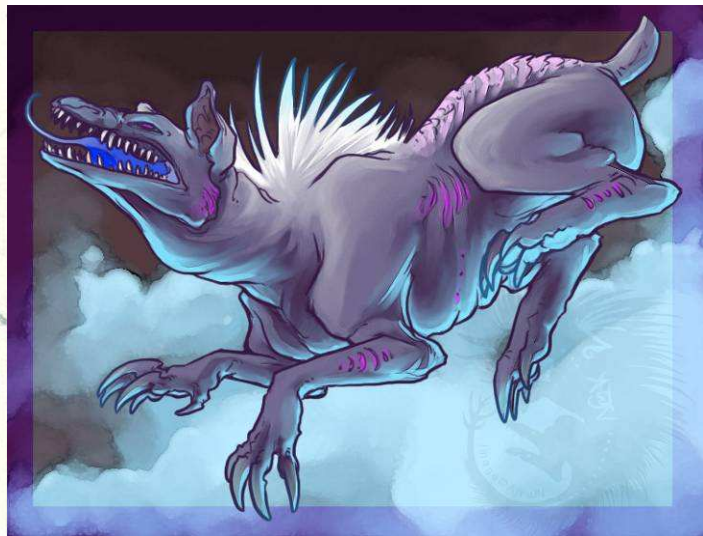


HOMMES DU FROID :



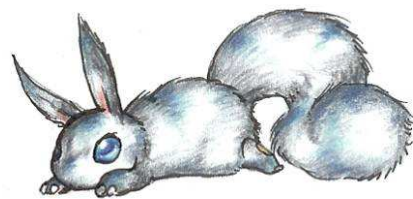


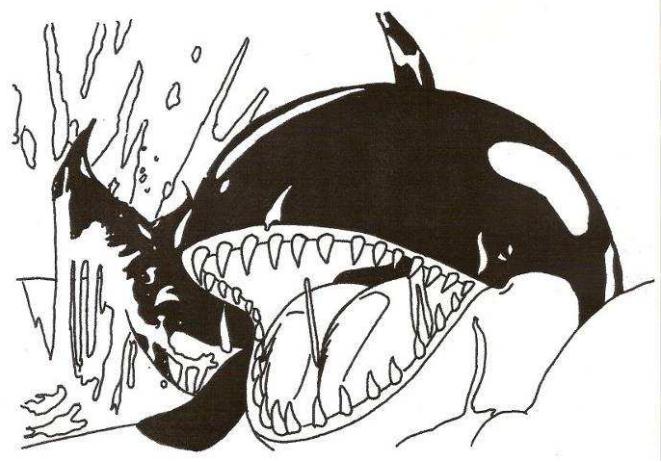
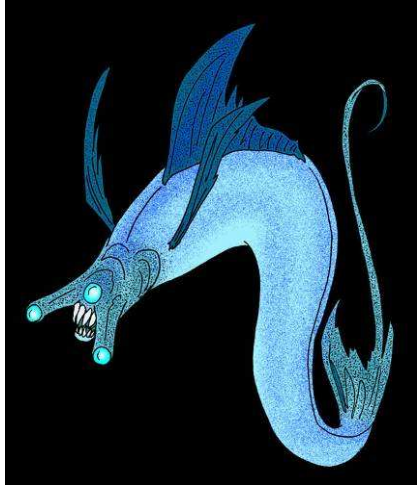
ANIMAUX MUTANTS :











MONSTRES « GAROUX » :



